



PENNSYLVANIA GAME COMMISSION

NORTHCENTRAL REGION

1566 SOUTH ROUTE 44 HIGHWAY JERSEY SHORE, PA 17740 | 1-833-742-4868 (PGC HUNT) 1-833-742-9453 (PGC WILD)

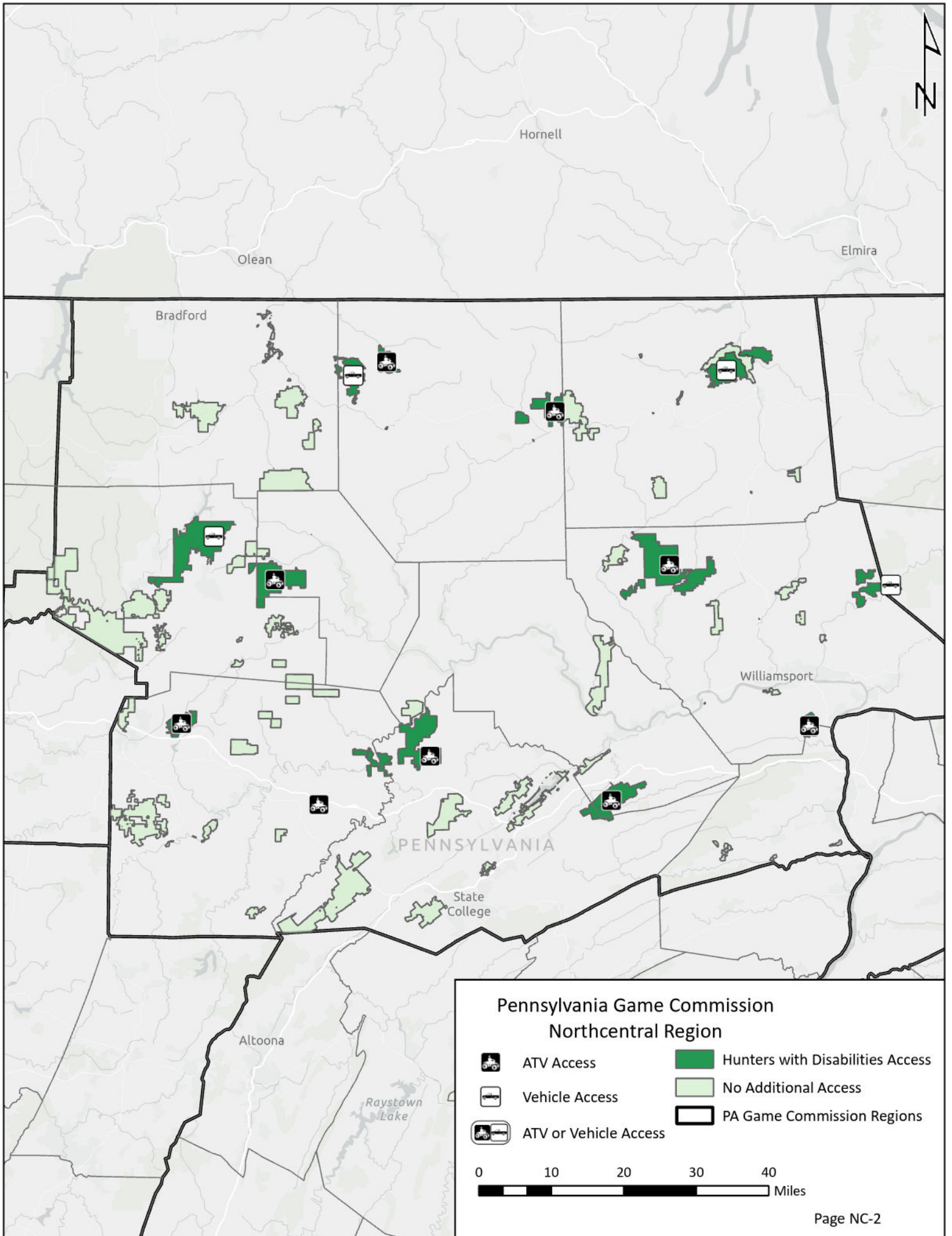
Northcentral Region



It is unlawful to ride ATVs on state game lands, except on designated roads open for persons issued a Disabled Persons Permit, and who have a valid registration from the Department of Conservation & Natural Resources.

Table of Contents

Northcentral Region Overview Map	NC-2
State Game Lands 14 Cameron and Elk counties.....	NC-3
State Game Lands 64 Potter and Tioga counties	NC-4
State Game Lands 75 Lycoming County.....	NC-5
State Game Lands 78 Clearfield County.....	NC-6
State Game Lands 100 Centre and Clearfield counties	NC-7
State Game Lands 204 Potter County.....	NC-8
State Game Lands 252 Lycoming and Union counties	NC-9
State Game Lands 295 Centre and Clinton counties.....	NC-10
State Game Lands 331 Clearfield County.....	NC-11



Hornell

Olean

Elmira

Bradford

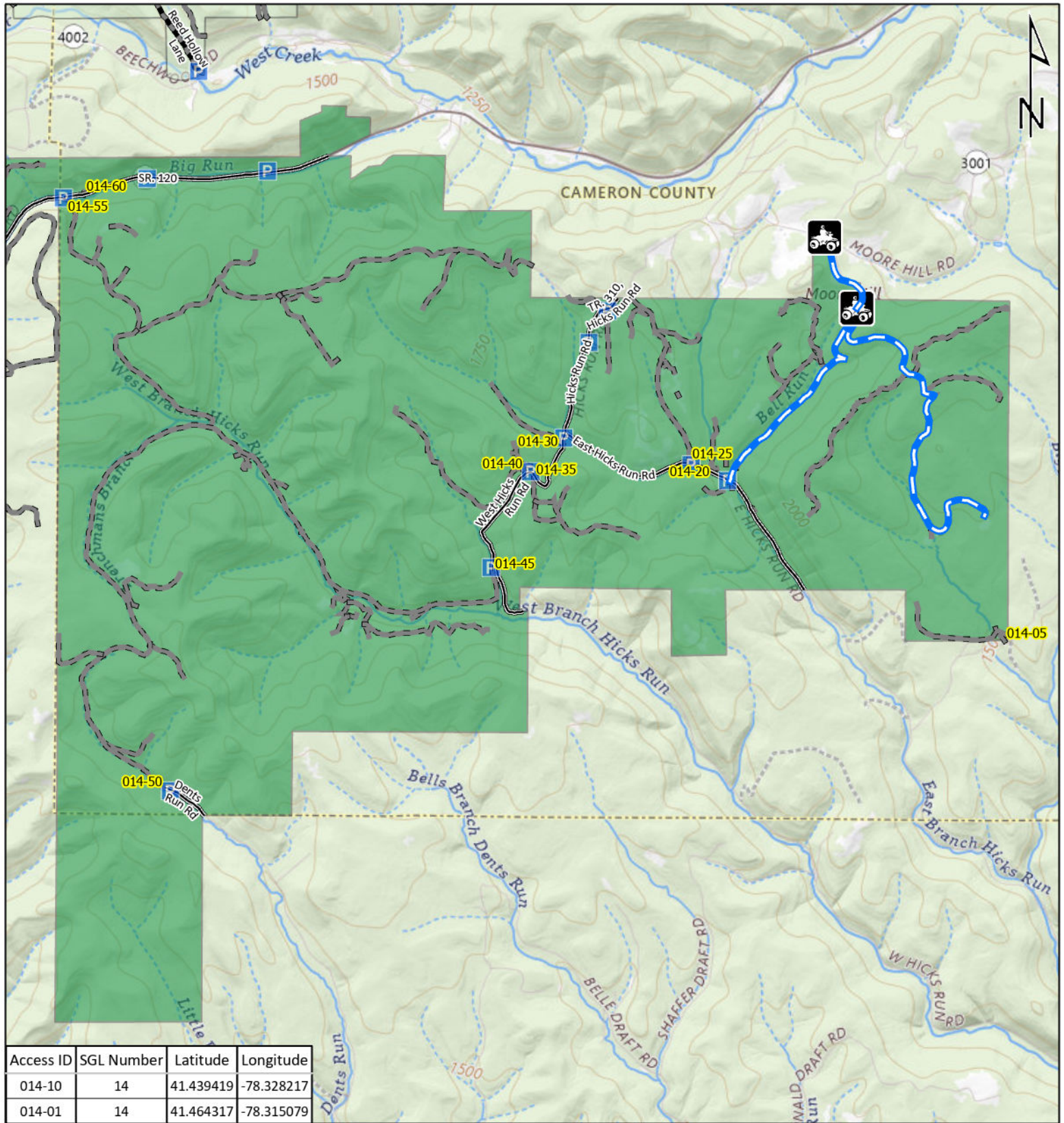
Williamsport

PENNSYLVANIA

State College

Altoona

Raystown Lake



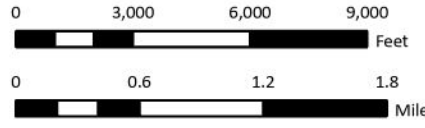
Access ID	SGL Number	Latitude	Longitude
014-10	14	41.439419	-78.328217
014-01	14	41.464317	-78.315079

Emergency Response Points

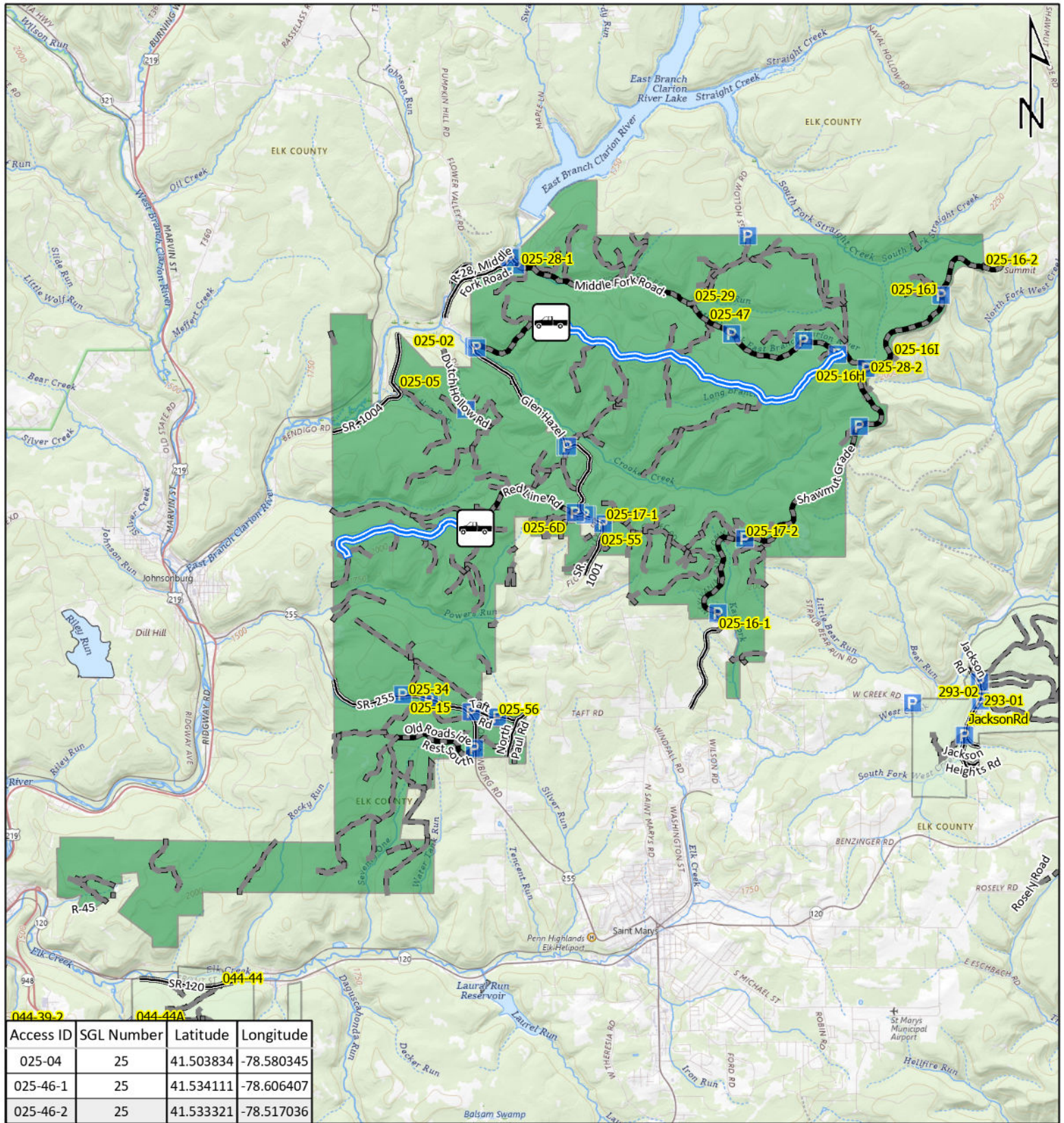
- ATV Access
- Vehicle Access
- ATV & Vehicle Access
- Roads Open to Vehicle Traffic
- Roads Seasonally Open to Vehicle Traffic
- Roads Closed to Vehicle Traffic



STATE GAME LAND 14



It is unlawful to ride ATV's on state game lands, except on designated roads open for persons issued a Disabled Person Permit, and who have a valid registration from the Department of Conservation & Natural Resources.



Access ID	SGL Number	Latitude	Longitude
025-04	25	41.503834	-78.580345
025-46-1	25	41.534111	-78.606407
025-46-2	25	41.533321	-78.517036

Emergency Response Points

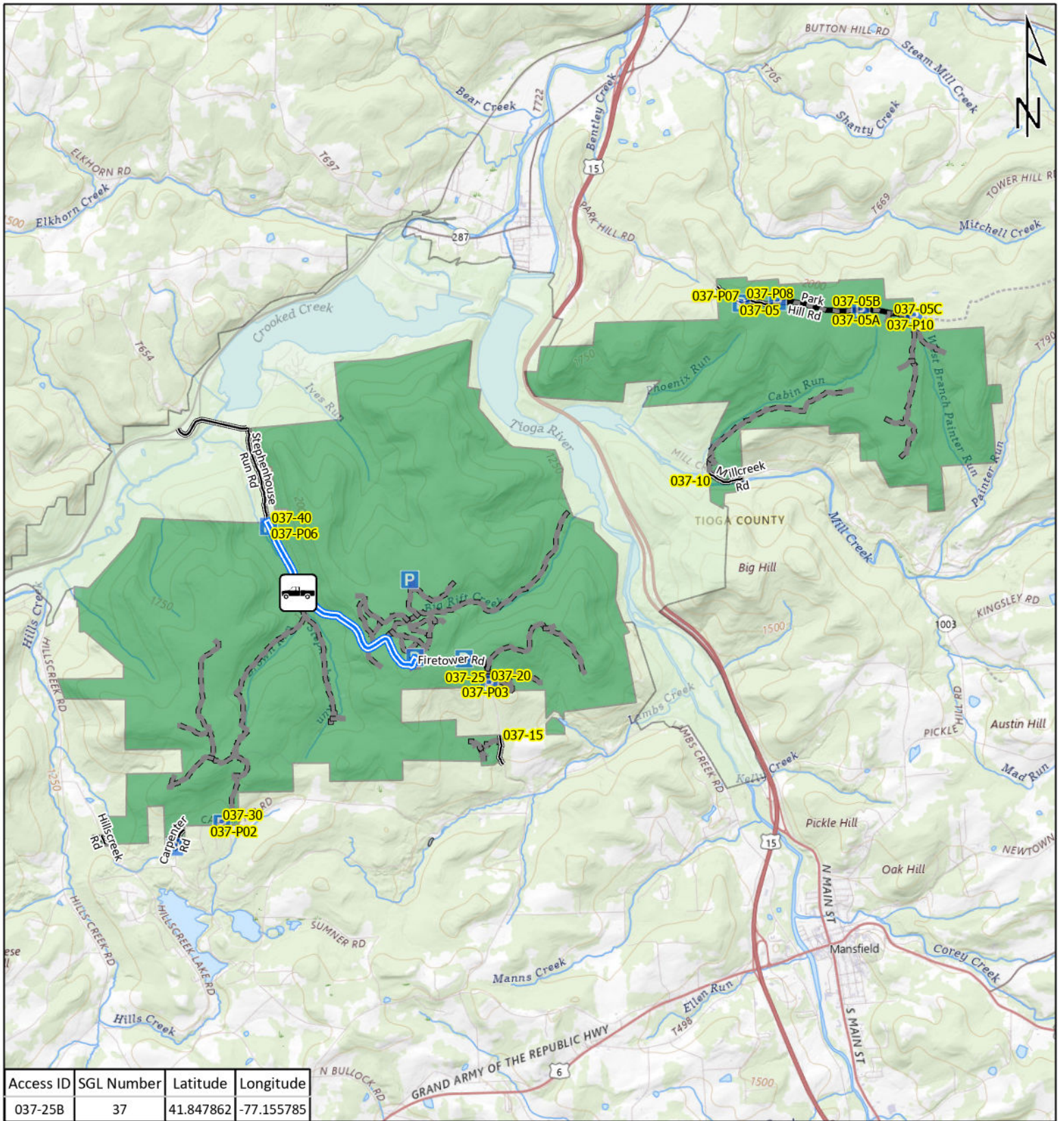
-   ATV Access
-   Vehicle Access
-   ATV & Vehicle Access
-  Roads Open to Vehicle Traffic
-  Roads Seasonally Open to Vehicle Traffic
-  Roads Closed to Vehicle Traffic



STATE GAME LAND 25



It is unlawful to ride ATV's on state game lands, except on designated roads open for persons issued a Disabled Person Permit, and who have a valid registration from the Department of Conservation & Natural Resources.

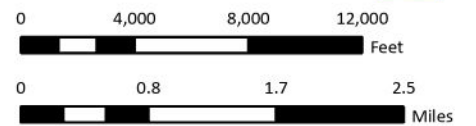


Emergency Response Points

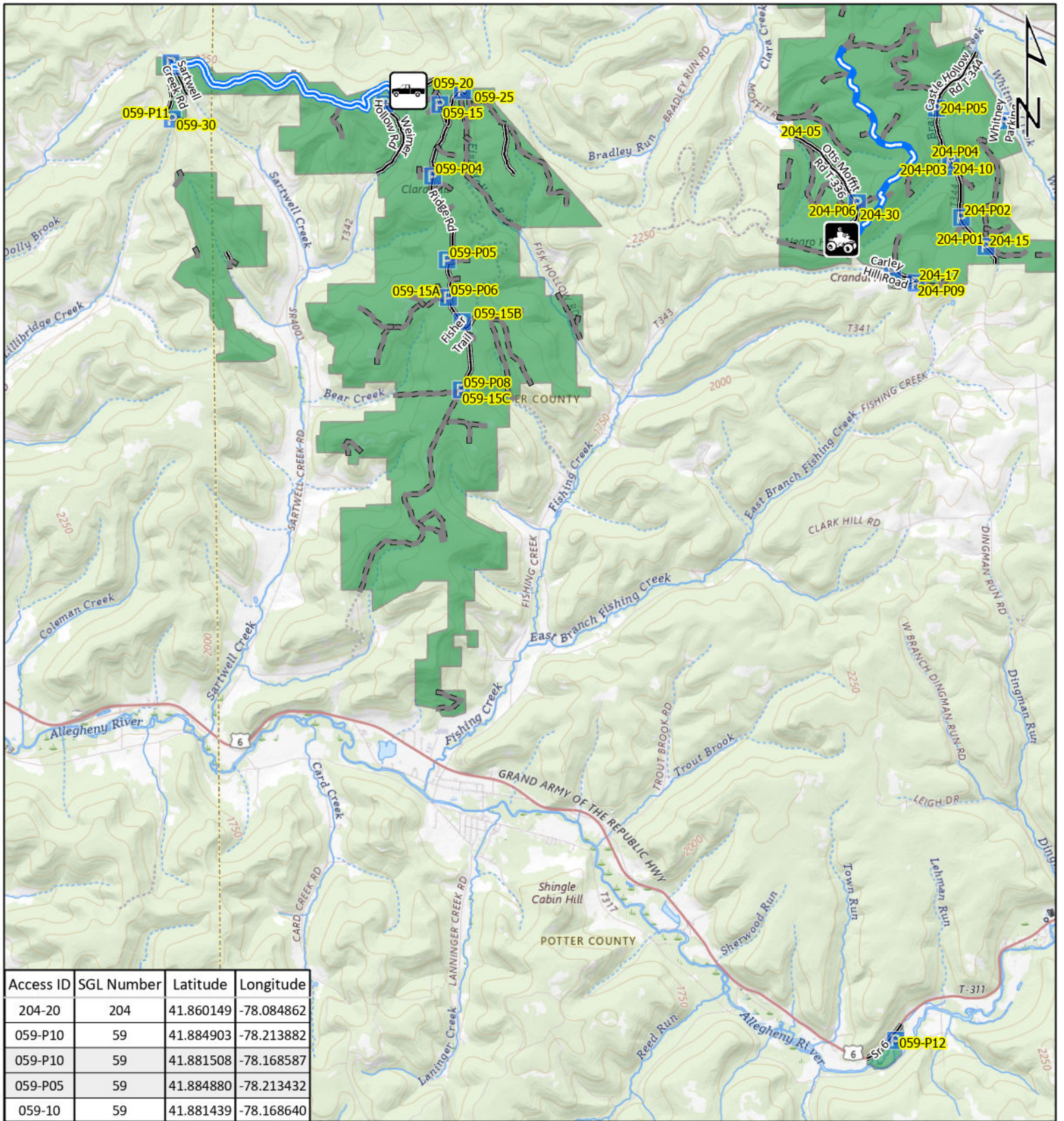
- ATV Access
- Vehicle Access
- ATV & Vehicle Access
- Roads Open to Vehicle Traffic
- Roads Seasonally Open to Vehicle Traffic
- Roads Closed to Vehicle Traffic



STATE GAME LAND 37



It is unlawful to ride ATV's on state game lands, except on designated roads open for persons issued a Disabled Person Permit, and who have a valid registration from the Department of Conservation & Natural Resources.



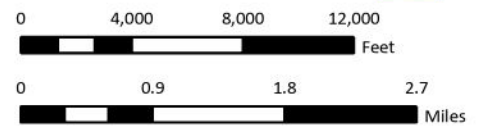
Access ID	SGL Number	Latitude	Longitude
204-20	204	41.860149	-78.084862
059-P10	59	41.884903	-78.213882
059-P10	59	41.881508	-78.168587
059-P05	59	41.884880	-78.213432
059-10	59	41.881439	-78.168640

Emergency Response Points

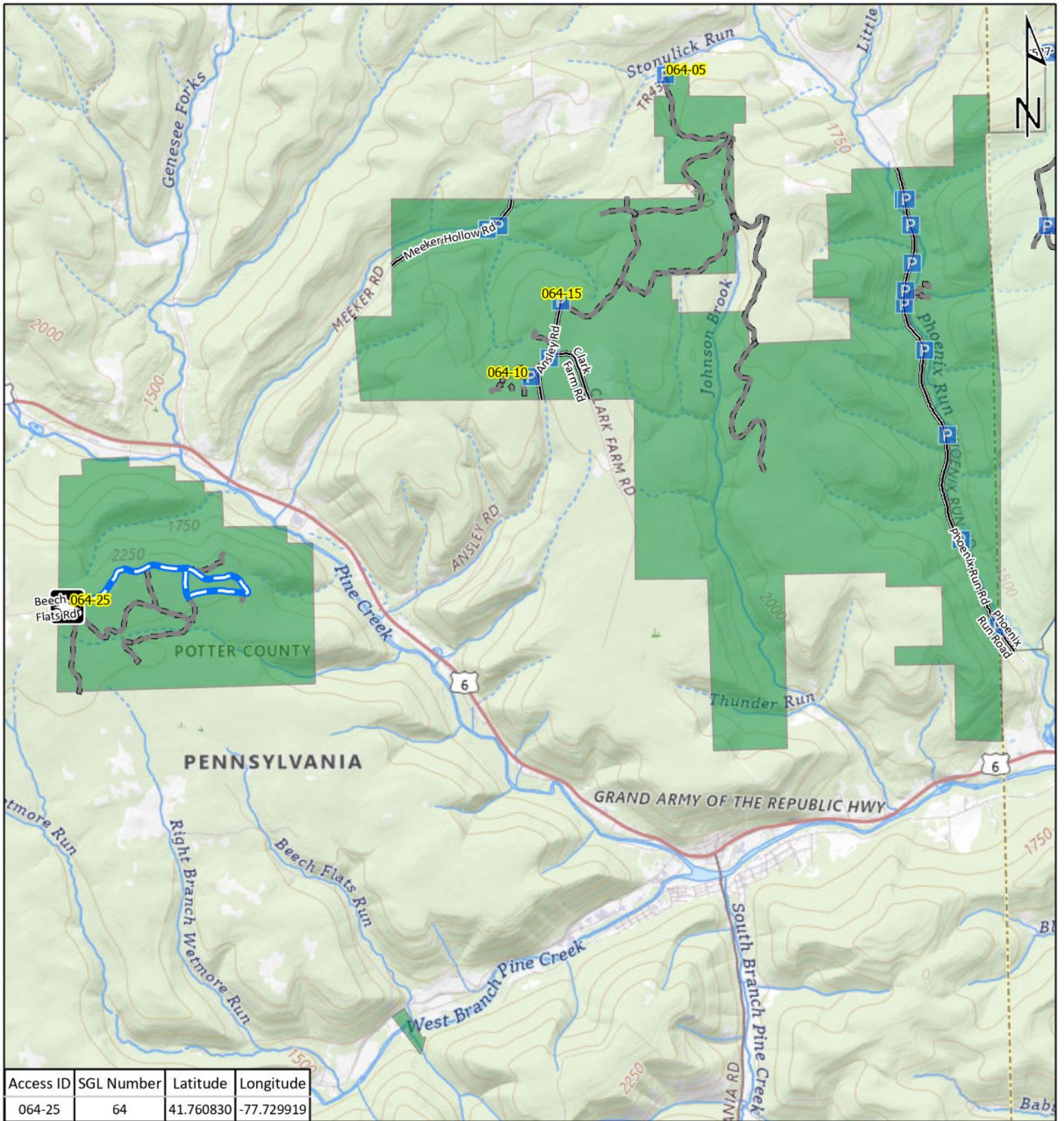
- ATV Access
- Vehicle Access
- ATV & Vehicle Access
- Roads Open to Vehicle Traffic
- Roads Seasonally Open to Vehicle Traffic
- Roads Closed to Vehicle Traffic



STATE GAME LAND 59



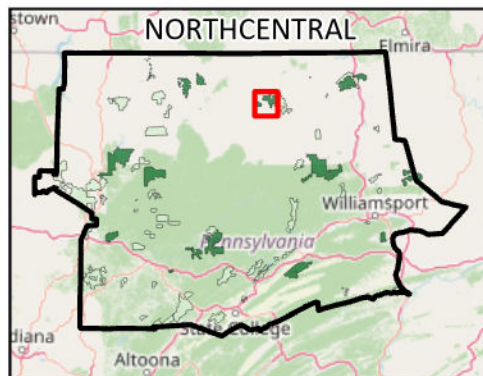
It is unlawful to ride ATV's on state game lands, except on designated roads open for persons issued a Disabled Person Permit, and who have a valid registration from the Department of Conservation & Natural Resources.



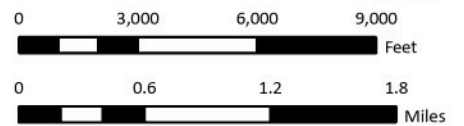
Access ID	SGL Number	Latitude	Longitude
064-25	64	41.760830	-77.729919

Emergency Response Points

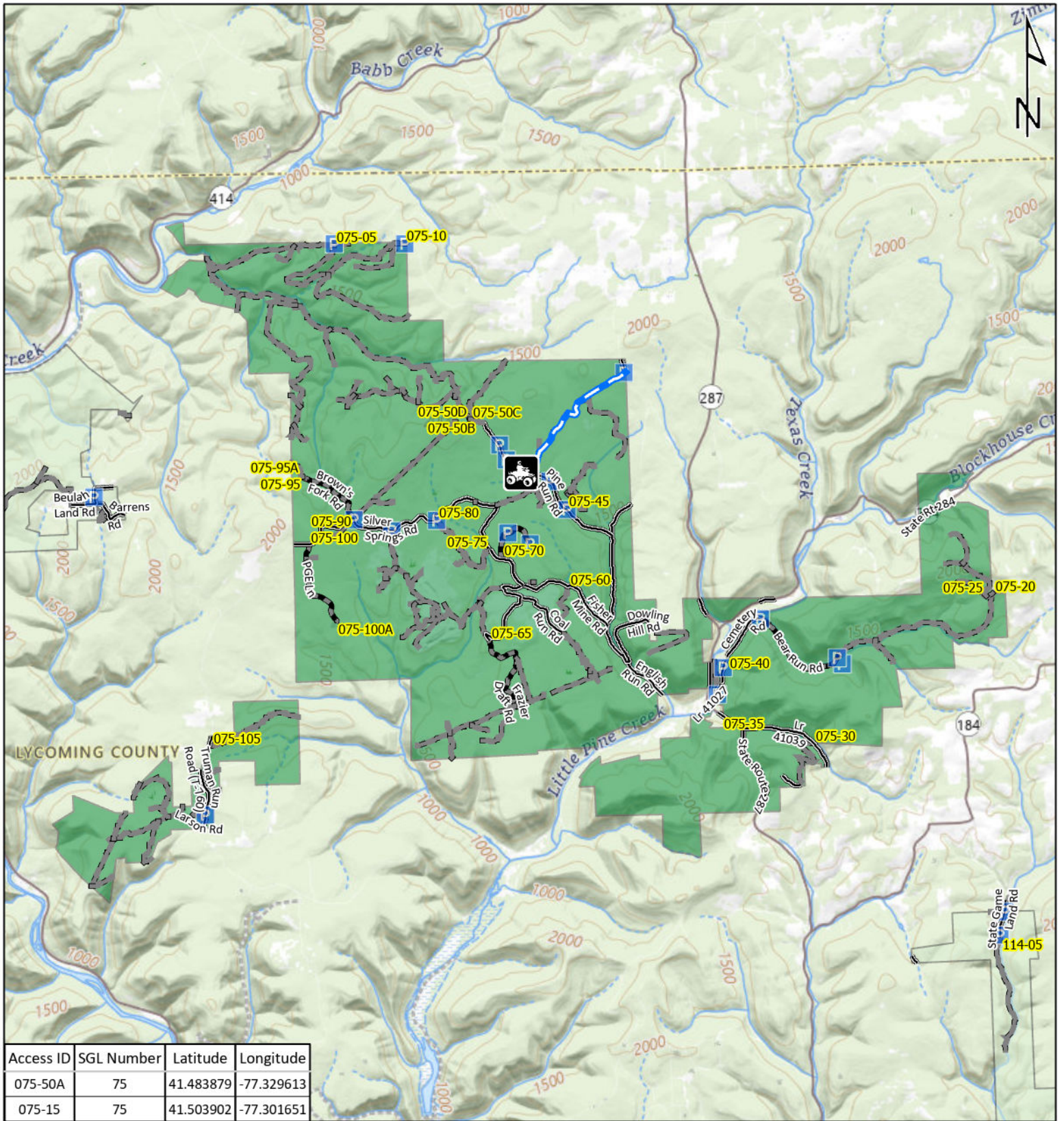
- ATV Access
- Vehicle Access
- ATV & Vehicle Access
- Roads Open to Vehicle Traffic
- Roads Seasonally Open to Vehicle Traffic
- Roads Closed to Vehicle Traffic



STATE GAME LAND 64



It is unlawful to ride ATV's on state game lands, except on designated roads open for persons issued a Disabled Person Permit, and who have a valid registration from the Department of Conservation & Natural Resources.



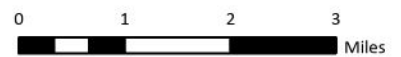
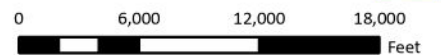
Access ID	SGL Number	Latitude	Longitude
075-50A	75	41.483879	-77.329613
075-15	75	41.503902	-77.301651

Emergency Response Points

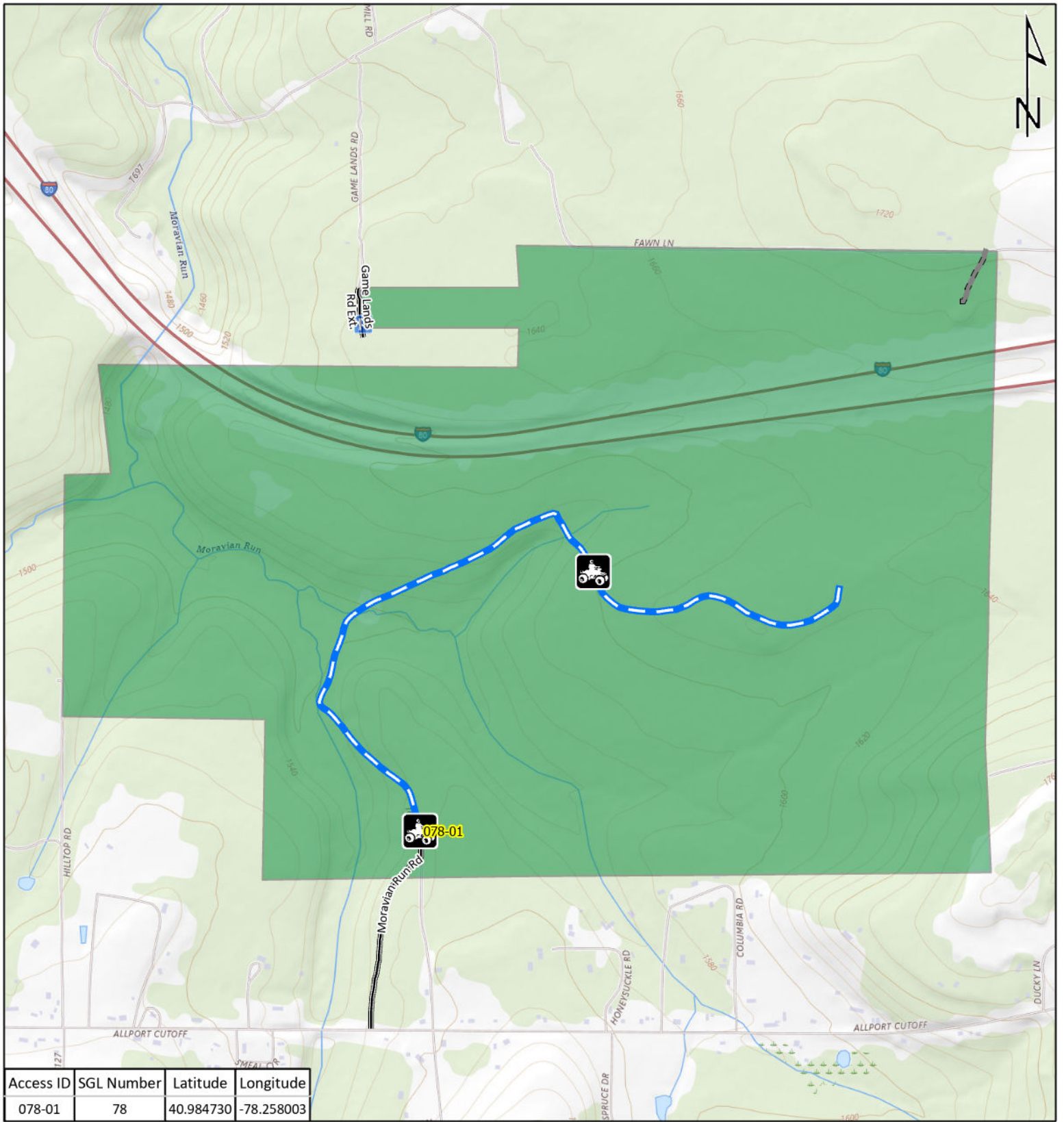
-   ATV Access
-   Vehicle Access
-   ATV & Vehicle Access
-  Roads Open to Vehicle Traffic
-  Roads Seasonally Open to Vehicle Traffic
-  Roads Closed to Vehicle Traffic



STATE GAME LAND 75



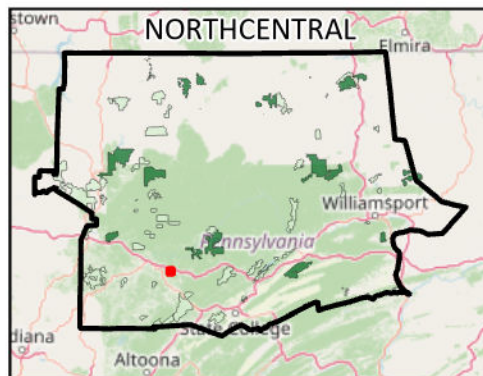
It is unlawful to ride ATV's on state game lands, except on designated roads open for persons issued a Disabled Person Permit, and who have a valid registration from the Department of Conservation & Natural Resources.



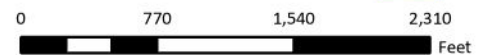
Access ID	SGL Number	Latitude	Longitude
078-01	78	40.984730	-78.258003

Emergency Response Points

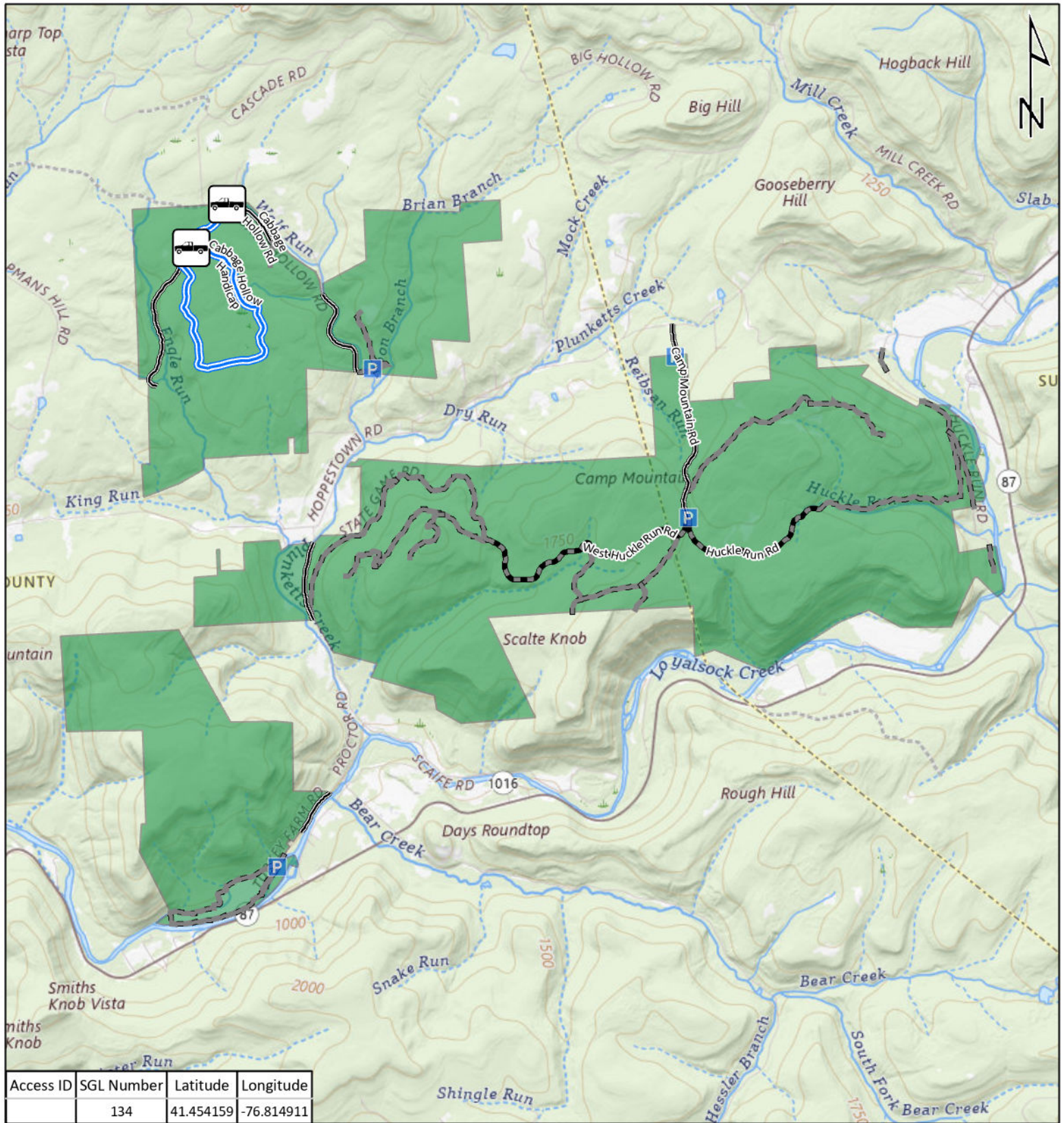
-   ATV Access
-   Vehicle Access
-   ATV & Vehicle Access
-  Roads Open to Vehicle Traffic
-  Roads Seasonally Open to Vehicle Traffic
-  Roads Closed to Vehicle Traffic



**STATE GAME
LAND 78**



It is unlawful to ride ATV's on state game lands, except on designated roads open for persons issued a Disabled Person Permit, and who have a valid registration from the Department of Conservation & Natural Resources.

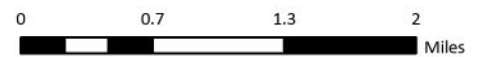
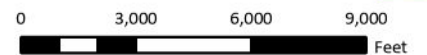


Emergency Response Points

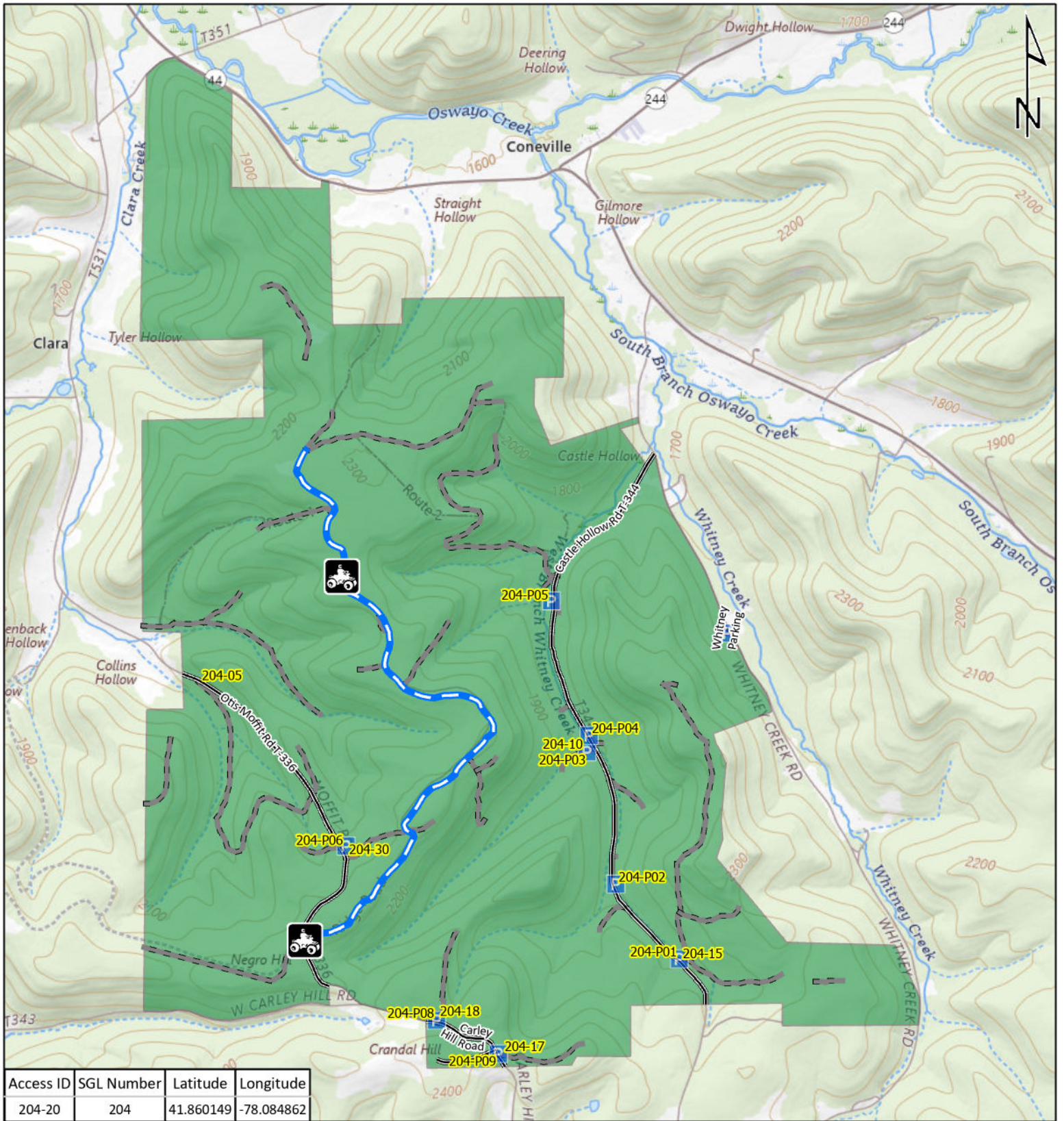
- ATV Access
- Vehicle Access
- ATV & Vehicle Access
- Roads Open to Vehicle Traffic
- Roads Seasonally Open to Vehicle Traffic
- Roads Closed to Vehicle Traffic



STATE GAME LAND 134

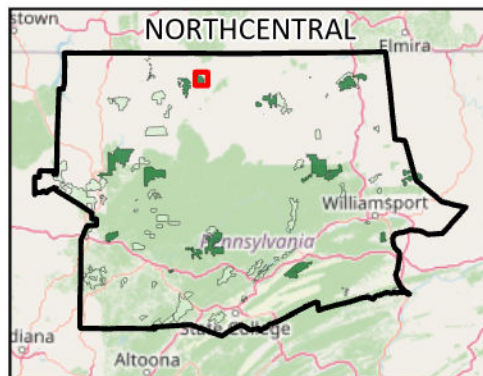


It is unlawful to ride ATV's on state game lands, except on designated roads open for persons issued a Disabled Person Permit, and who have a valid registration from the Department of Conservation & Natural Resources.

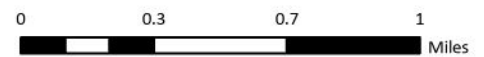


Emergency Response Points

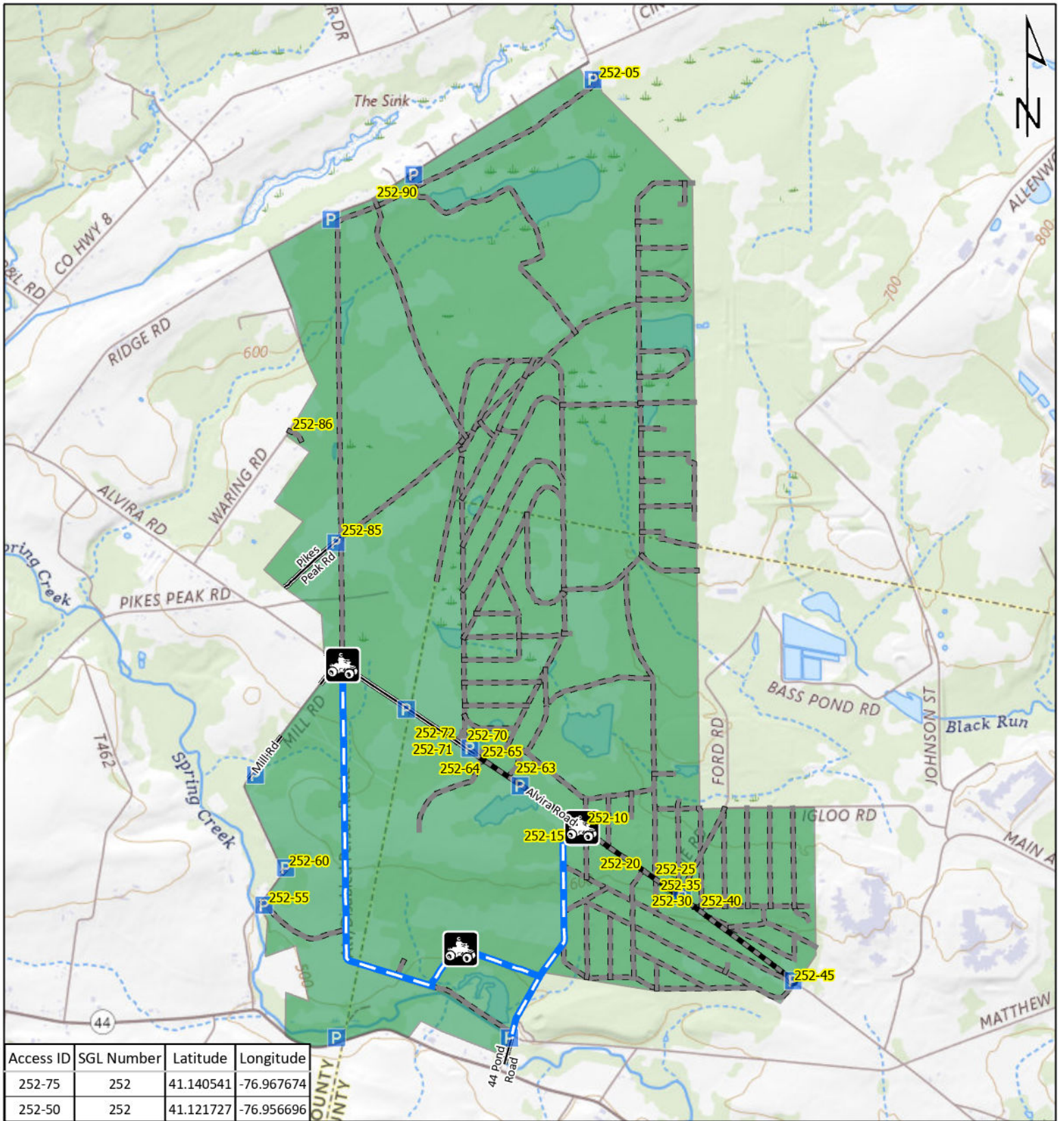
- ATV Access
- Vehicle Access
- ATV & Vehicle Access
- Roads Open to Vehicle Traffic
- Roads Seasonally Open to Vehicle Traffic
- Roads Closed to Vehicle Traffic



STATE GAME LAND 204



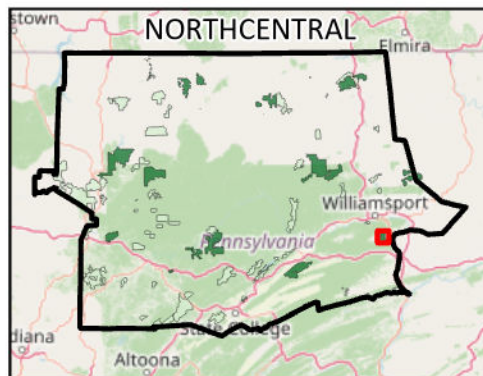
It is unlawful to ride ATV's on state game lands, except on designated roads open for persons issued a Disabled Person Permit, and who have a valid registration from the Department of Conservation & Natural Resources.



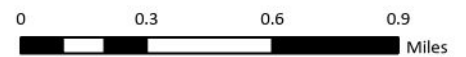
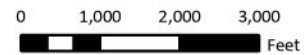
Access ID	SGL Number	Latitude	Longitude
252-75	252	41.140541	-76.967674
252-50	252	41.121727	-76.956696

Emergency Response Points

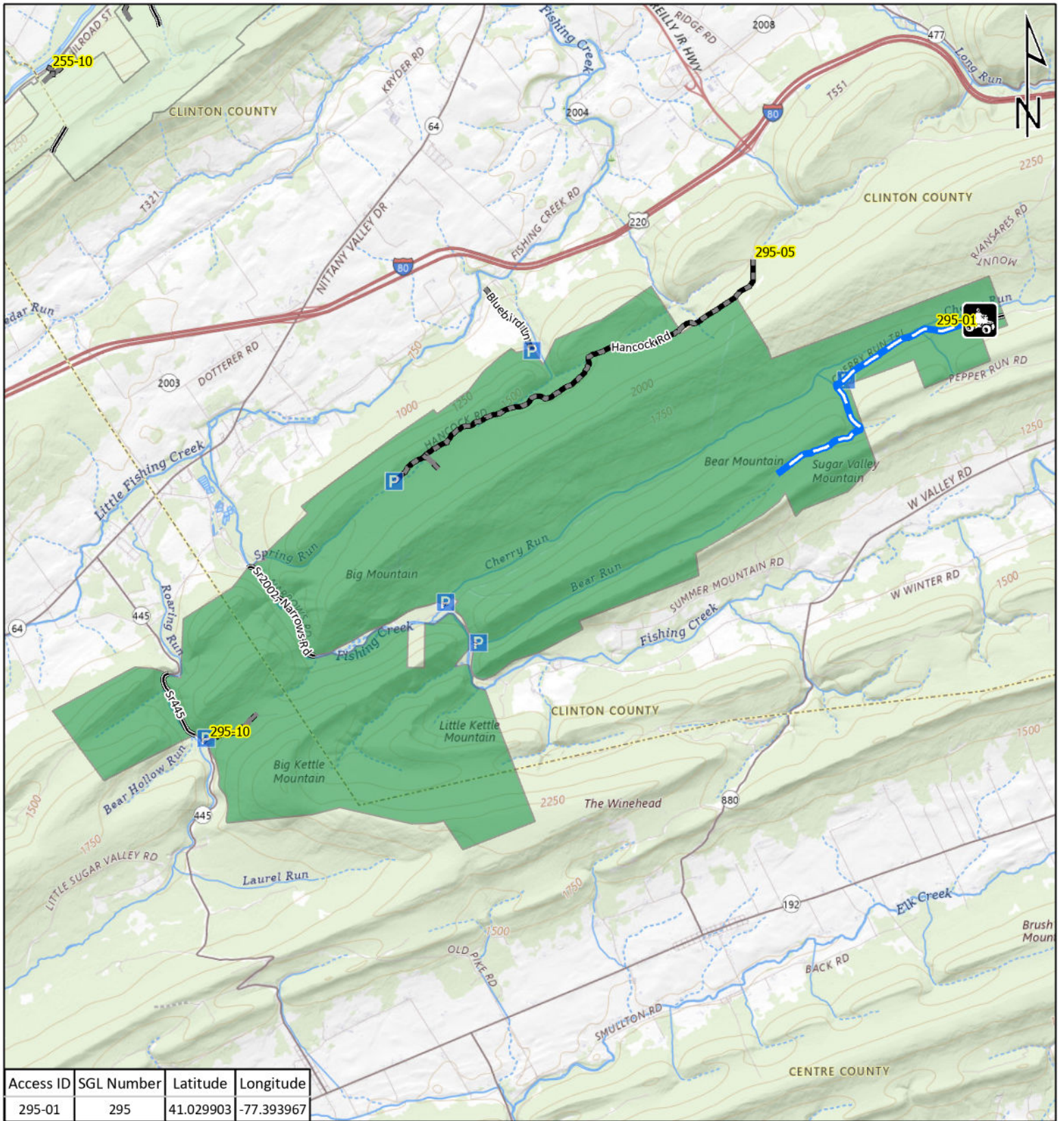
-   ATV Access
-   Vehicle Access
-   ATV & Vehicle Access
-  Roads Open to Vehicle Traffic
-  Roads Seasonally Open to Vehicle Traffic
-  Roads Closed to Vehicle Traffic



STATE GAME LAND 252



It is unlawful to ride ATVs on state game lands, except on designated roads open for persons issued a Disabled Person Permit, and who have a valid registration from the Department of Conservation & Natural Resources.



Emergency Response Points

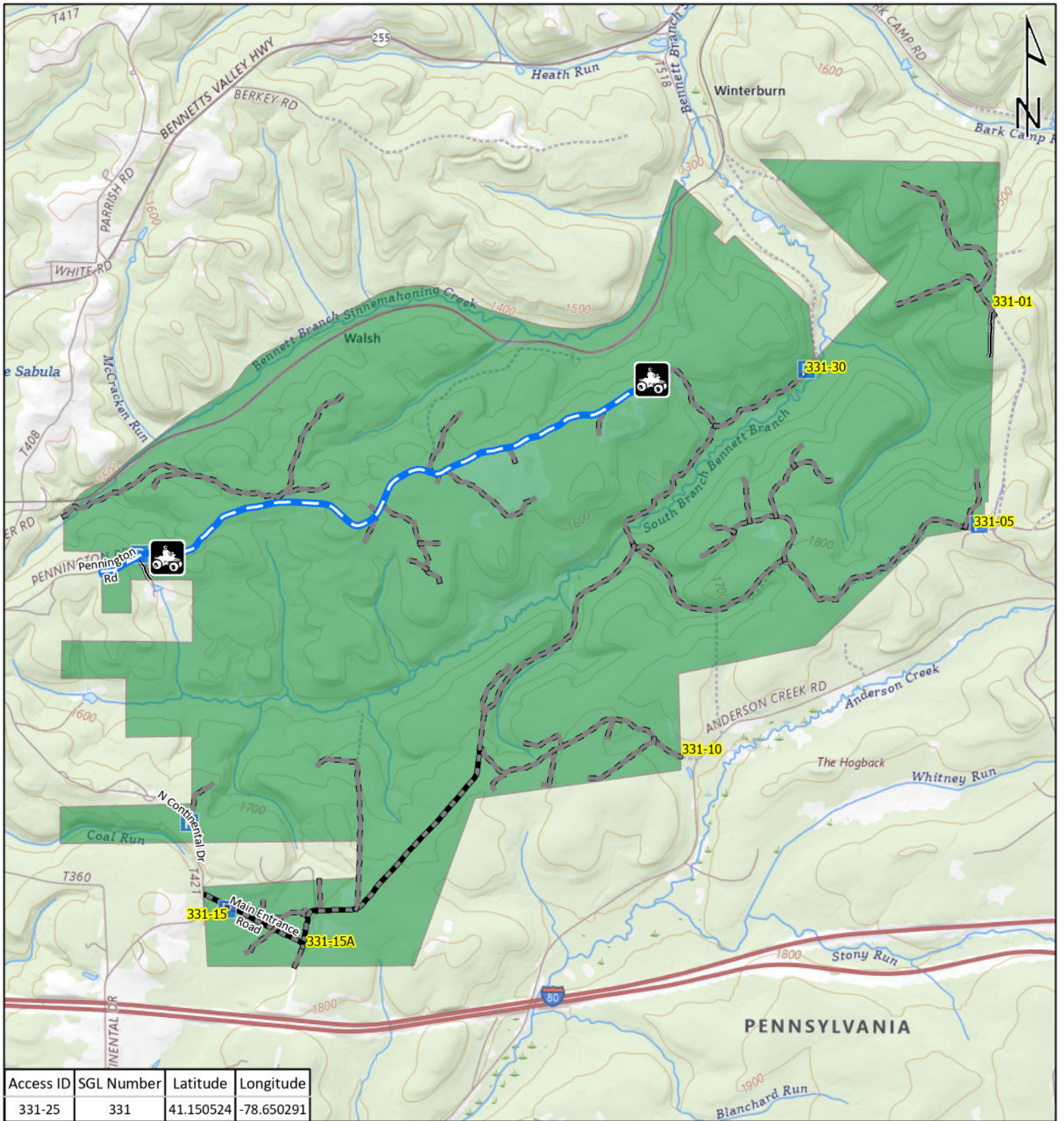
-   ATV Access
-   Vehicle Access
-   ATV & Vehicle Access
-  Roads Open to Vehicle Traffic
-  Roads Seasonally Open to Vehicle Traffic
-  Roads Closed to Vehicle Traffic



**STATE GAME
LAND 295**



It is unlawful to ride ATV's on state game lands, except on designated roads open for persons issued a Disabled Person Permit, and who have a valid registration from the Department of Conservation & Natural Resources.

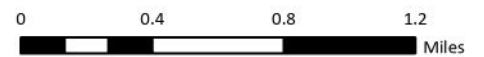
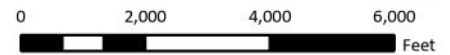


Emergency Response Points

- ATV Access
- Vehicle Access
- ATV & Vehicle Access
- Roads Open to Vehicle Traffic
- Roads Seasonally Open to Vehicle Traffic
- Roads Closed to Vehicle Traffic



STATE GAME LAND 331



It is unlawful to ride ATVs on state game lands, except on designated roads open for persons issued a Disabled Person Permit, and who have a valid registration from the Department of Conservation & Natural Resources.