



PENNSYLVANIA GAME COMMISSION

NORTHEAST REGION

3917 MEMORIAL HIGHWAY DALLAS, PA 18612 | 1-833-742-4868 (PGC HUNT) 1-833-742-9453 (PGC WILD)

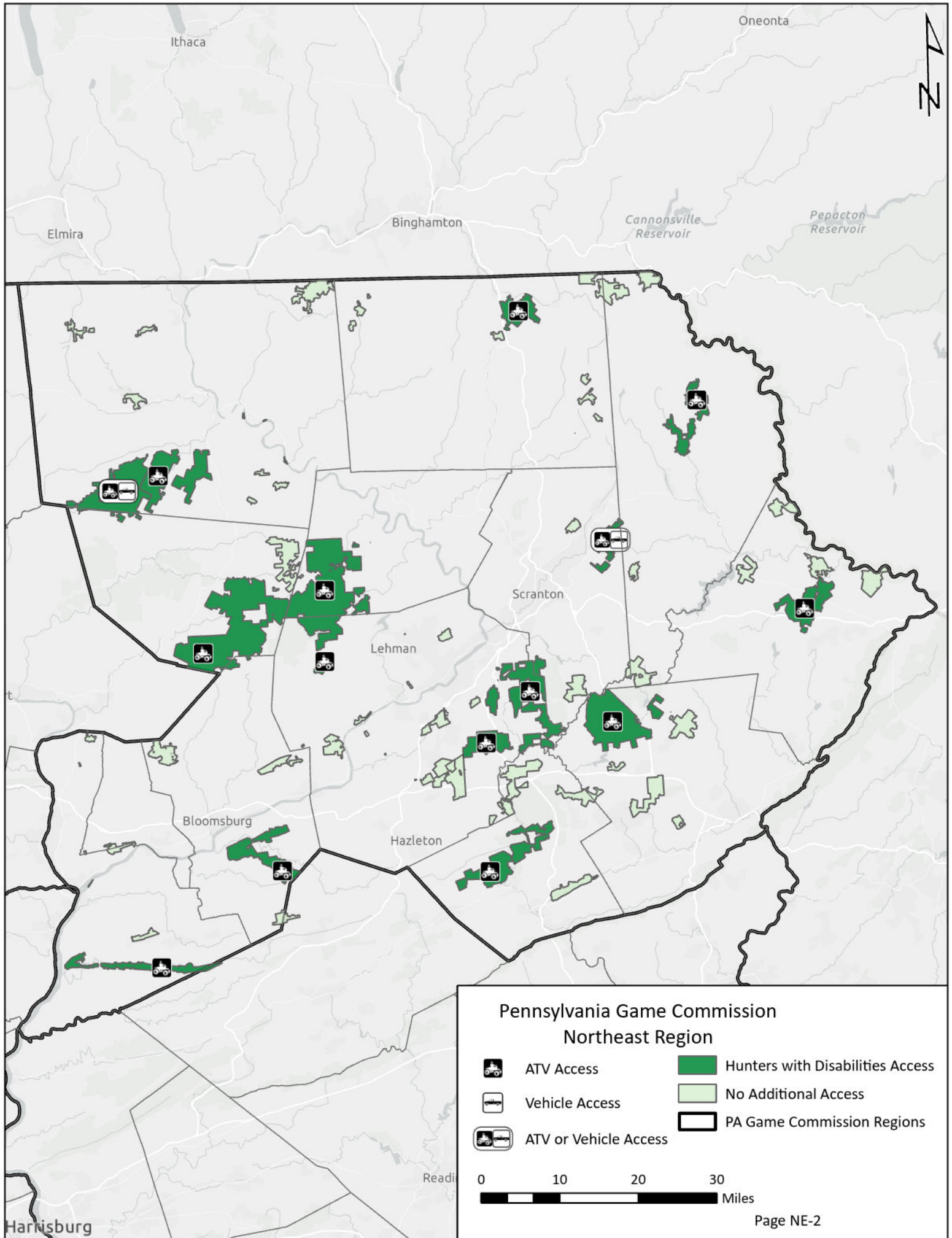
Northeast Region



It is unlawful to ride ATVs on state game lands, except on designated roads open for persons issued a Disabled Persons Permit, and who have a valid registration from the Department of Conservation & Natural Resources.

Table of Contents

Northeast Region Overview Map	NE-2
State Game Lands 12	Bradford and Sullivan counties.....	NE-3
State Game Lands 13	Sullivan and Columbia counties.....	NE-4
State Game Lands 35	Susquehanna County	NE-5
State Game Lands 36	Bradford County.....	NE-6
State Game Lands 57	Wyoming and Luzerne counties	NE-7
State Game Lands 58	Columbia County.....	NE-8
State Game Lands 84	Northumberland and Schuylkill counties	NE-9
State Game Lands 91	Luzerne and Lackawanna counties.....	NE-10
State Game Lands 119	Luzerne County	NE-11
State Game Lands 127	Monroe County	NE-12
State Game Lands 141	Carbon County	NE-13
State Game Lands 159	Wayne County.....	NE-14
State Game Lands 180	Pike County	NE-15
State Game Lands 206	Luzerne County	NE-16
State Game Lands 300	Lackawanna and Wayne counties	NE-17



Oneonta

Ithaca



Elmira

Binghamton

Cannonsville Reservoir

Pepacton Reservoir

Scranton

Lehman

Bloomsburg

Hazleton

Reading

Harrisburg

**Pennsylvania Game Commission
Northeast Region**



ATV Access



Vehicle Access



ATV or Vehicle Access



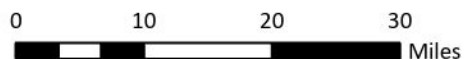
Hunters with Disabilities Access

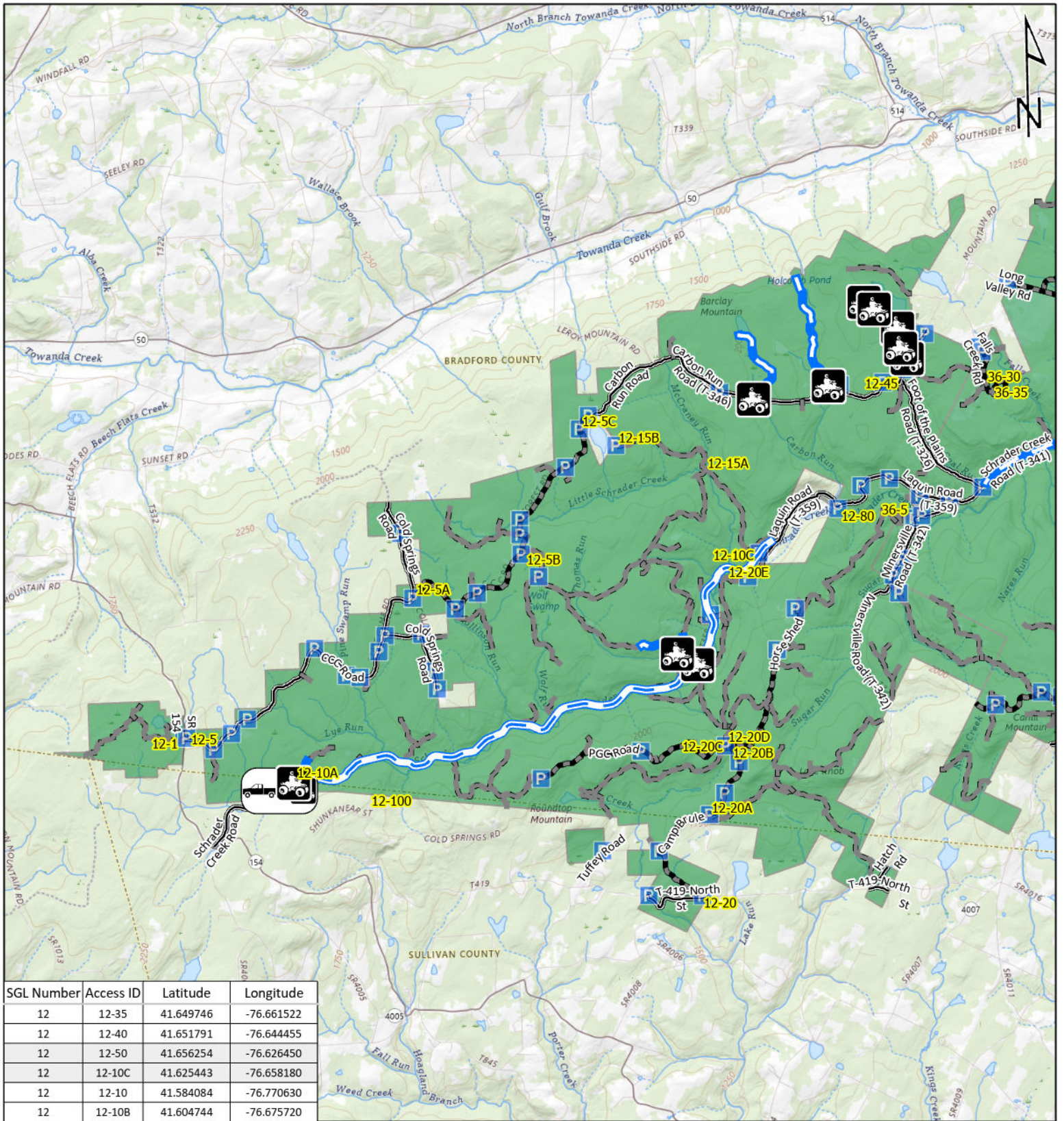


No Additional Access



PA Game Commission Regions

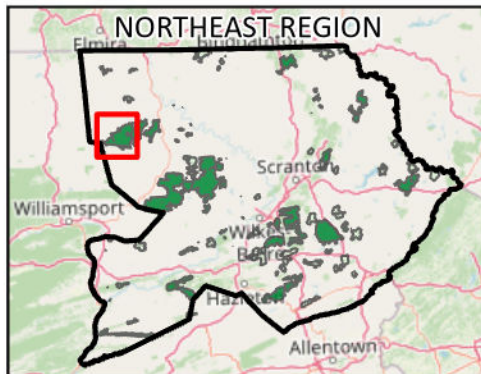




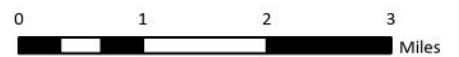
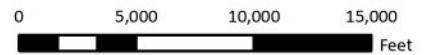
SGL Number	Access ID	Latitude	Longitude
12	12-35	41.649746	-76.661522
12	12-40	41.651791	-76.644455
12	12-50	41.656254	-76.626450
12	12-10C	41.625443	-76.658180
12	12-10	41.584084	-76.770630
12	12-10B	41.604744	-76.675720

EMERGENCY RESPONSE POINTS

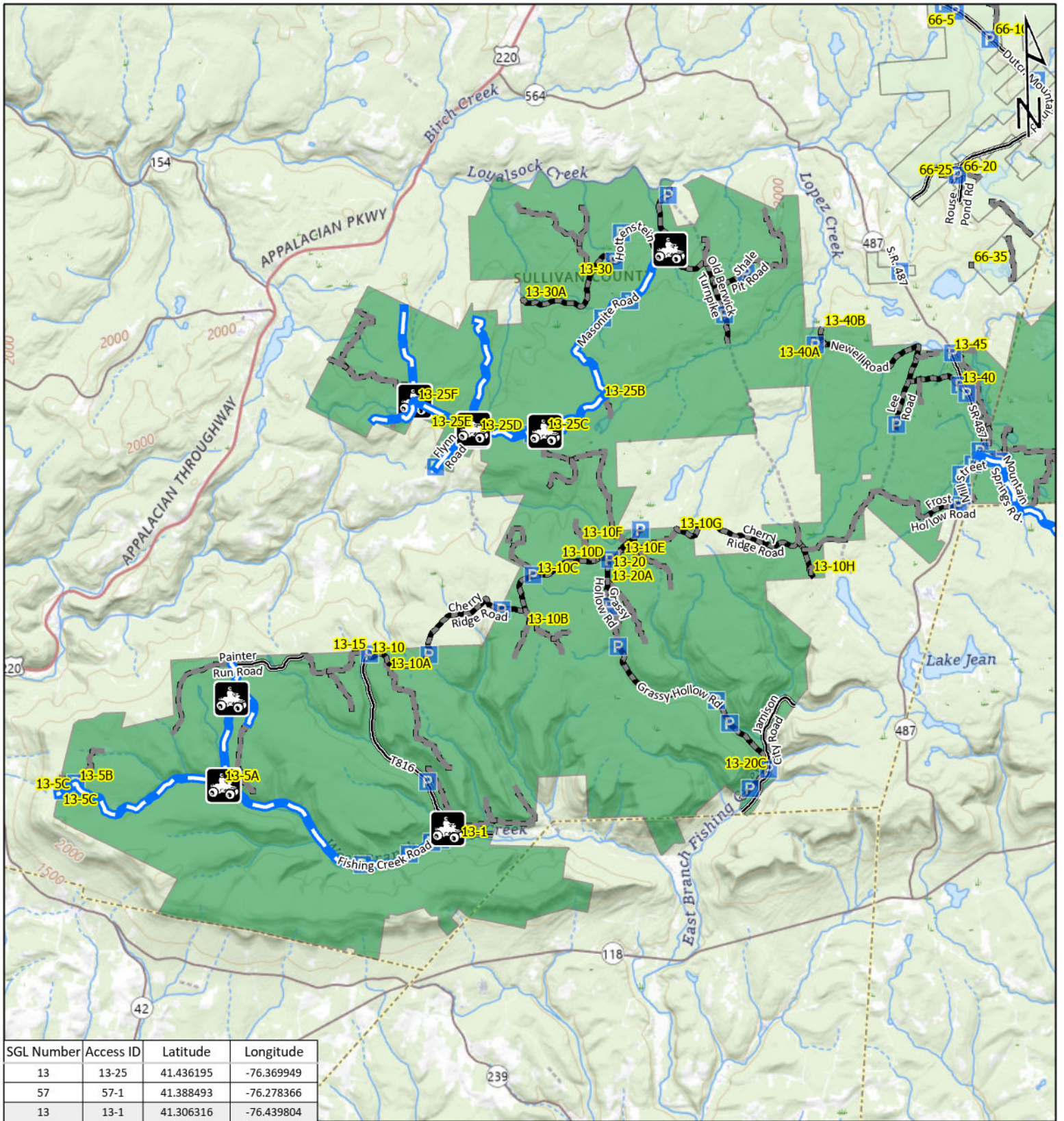
- ATV ACCESS**
- VEHICLE ACCESS**
- ATV & VEHICLE**
- ROADS OPEN TO VEHICLE TRAFFIC**
- ROADS SEASONALLY OPEN TO VEHICLE TRAFFIC**
- ROADS CLOSED TO VEHICLE TRAFFIC**



STATE GAME LAND 12



It is unlawful to ride ATV's on state game lands, except on designated roads open for persons issued a Disabled Person Permit, and who have a valid registration from the Department of Conservation & Natural Resources.

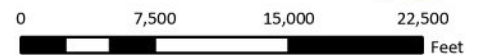


EMERGENCY RESPONSE POINTS

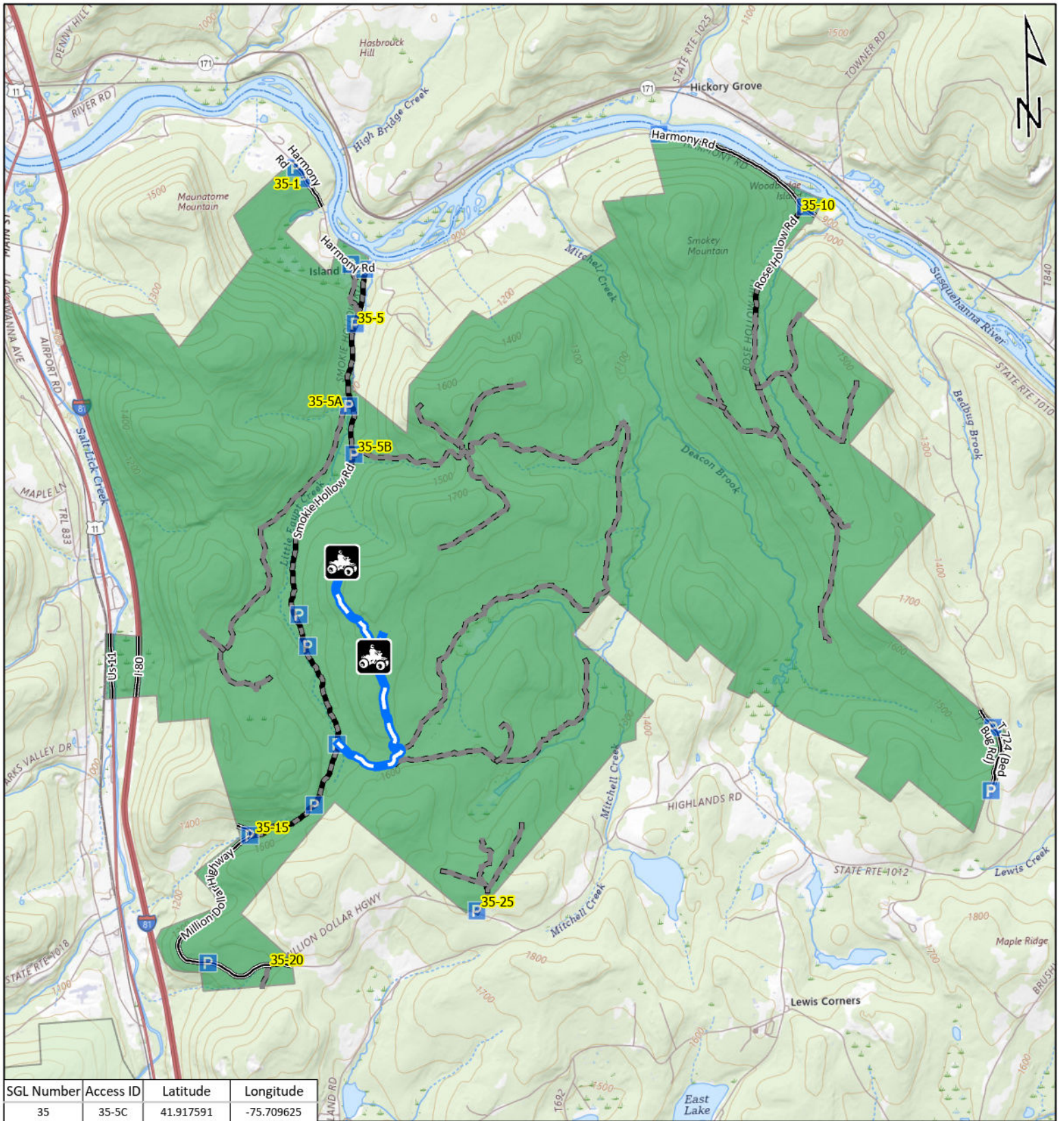
- ATV ACCESS**
- VEHICLE ACCESS**
- ATV & VEHICLE**
- ROADS OPEN TO VEHICLE TRAFFIC**
- ROADS SEASONALLY OPEN TO VEHICLE TRAFFIC**
- ROADS CLOSED TO VEHICLE TRAFFIC**



STATE GAME LAND 13

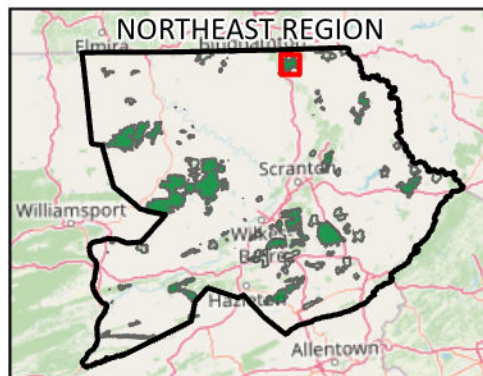


It is unlawful to ride ATV's on state game lands, except on designated roads open for persons issued a Disabled Person Permit, and who have a valid registration from the Department of Conservation & Natural Resources.

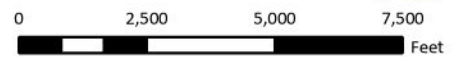


EMERGENCY RESPONSE POINTS

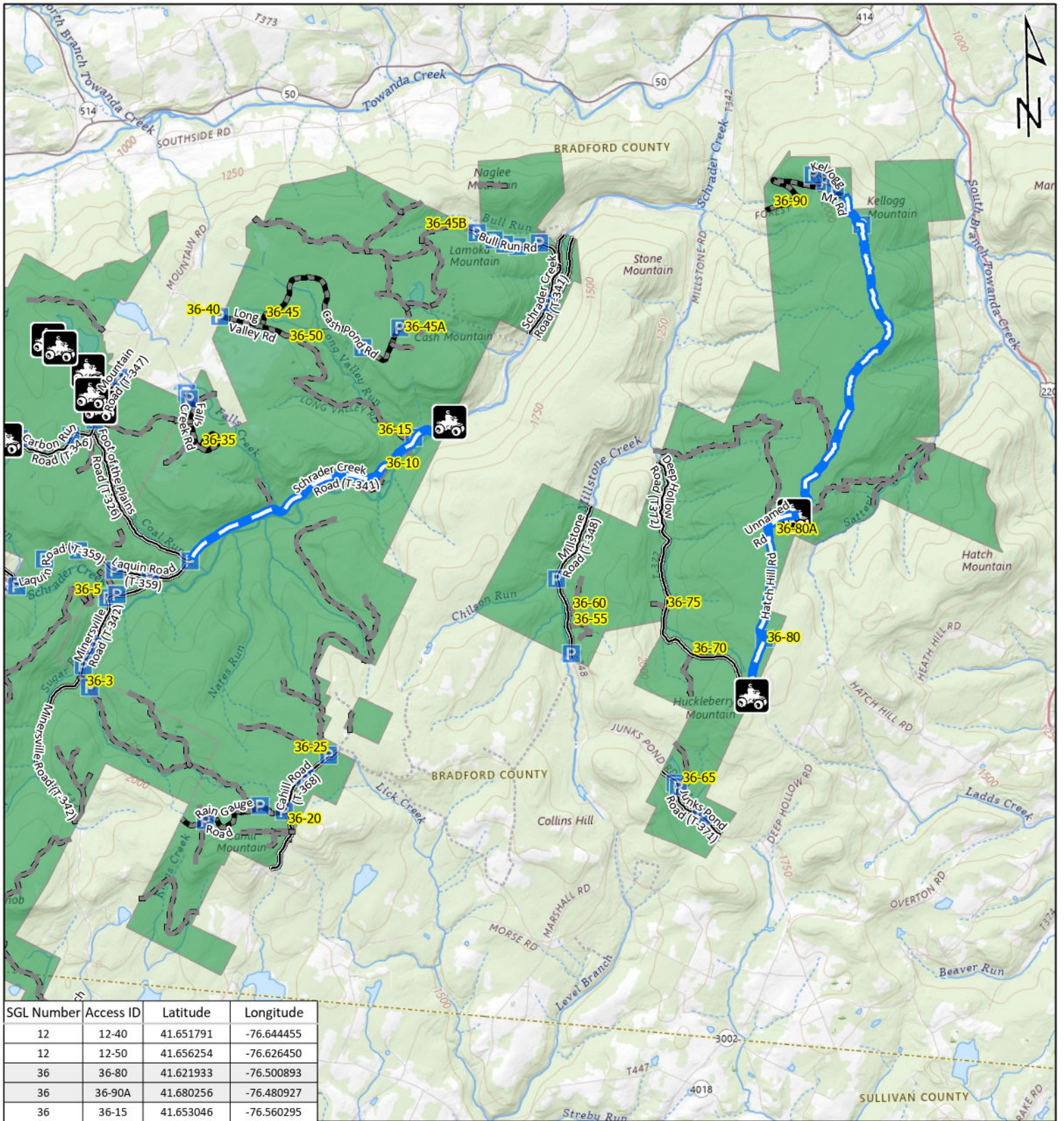
- ATV ACCESS**
- VEHICLE ACCESS**
- ATV & VEHICLE**
- ROADS OPEN TO VEHICLE TRAFFIC**
- ROADS SEASONALLY OPEN TO VEHICLE TRAFFIC**
- ROADS CLOSED TO VEHICLE TRAFFIC**



**STATE GAME
LAND 35**



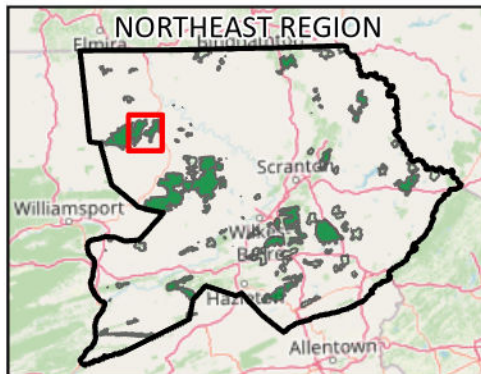
It is unlawful to ride ATV's on state game lands, except on designated roads open for persons issued a Disabled Person Permit, and who have a valid registration from the Department of Conservation & Natural Resources.



SGL Number	Access ID	Latitude	Longitude
12	12-40	41.651791	-76.644455
12	12-50	41.656254	-76.626450
36	36-80	41.621933	-76.500893
36	36-90A	41.680256	-76.480927
36	36-15	41.653046	-76.560295

EMERGENCY RESPONSE POINTS

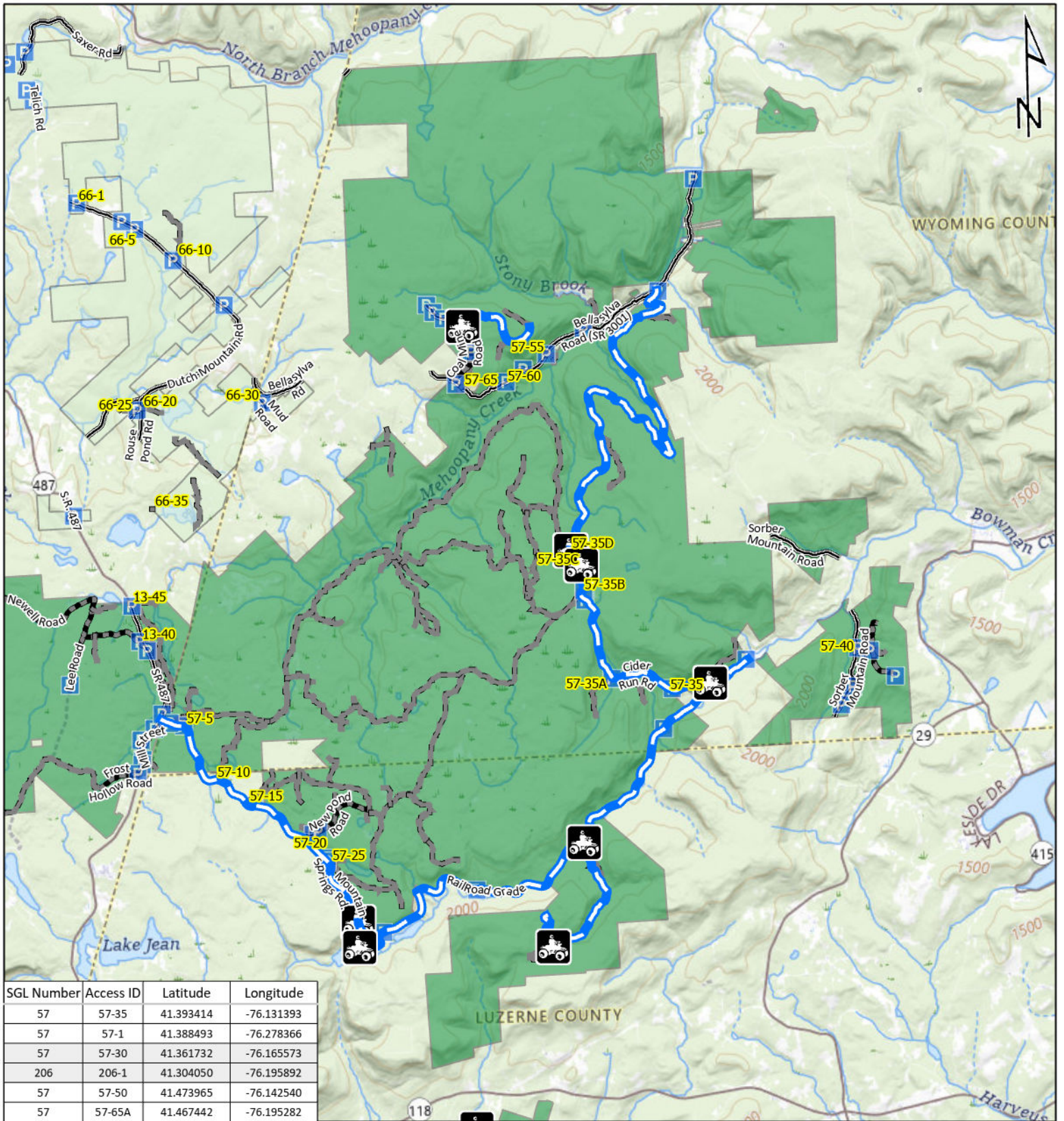
- ATV ACCESS
- VEHICLE ACCESS
- ATV & VEHICLE
- ROADS OPEN TO VEHICLE TRAFFIC
- ROADS SEASONALLY OPEN TO VEHICLE TRAFFIC
- ROADS CLOSED TO VEHICLE TRAFFIC



STATE GAME LAND 36




It is unlawful to ride ATV's on state game lands, except on designated roads open for persons issued a Disabled Person Permit, and who have a valid registration from the Department of Conservation & Natural Resources.



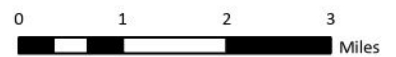
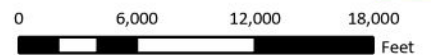
SGL Number	Access ID	Latitude	Longitude
57	57-35	41.393414	-76.131393
57	57-1	41.388493	-76.278366
57	57-30	41.361732	-76.165573
206	206-1	41.304050	-76.195892
57	57-50	41.473965	-76.142540
57	57-65A	41.467442	-76.195282

EMERGENCY RESPONSE POINTS

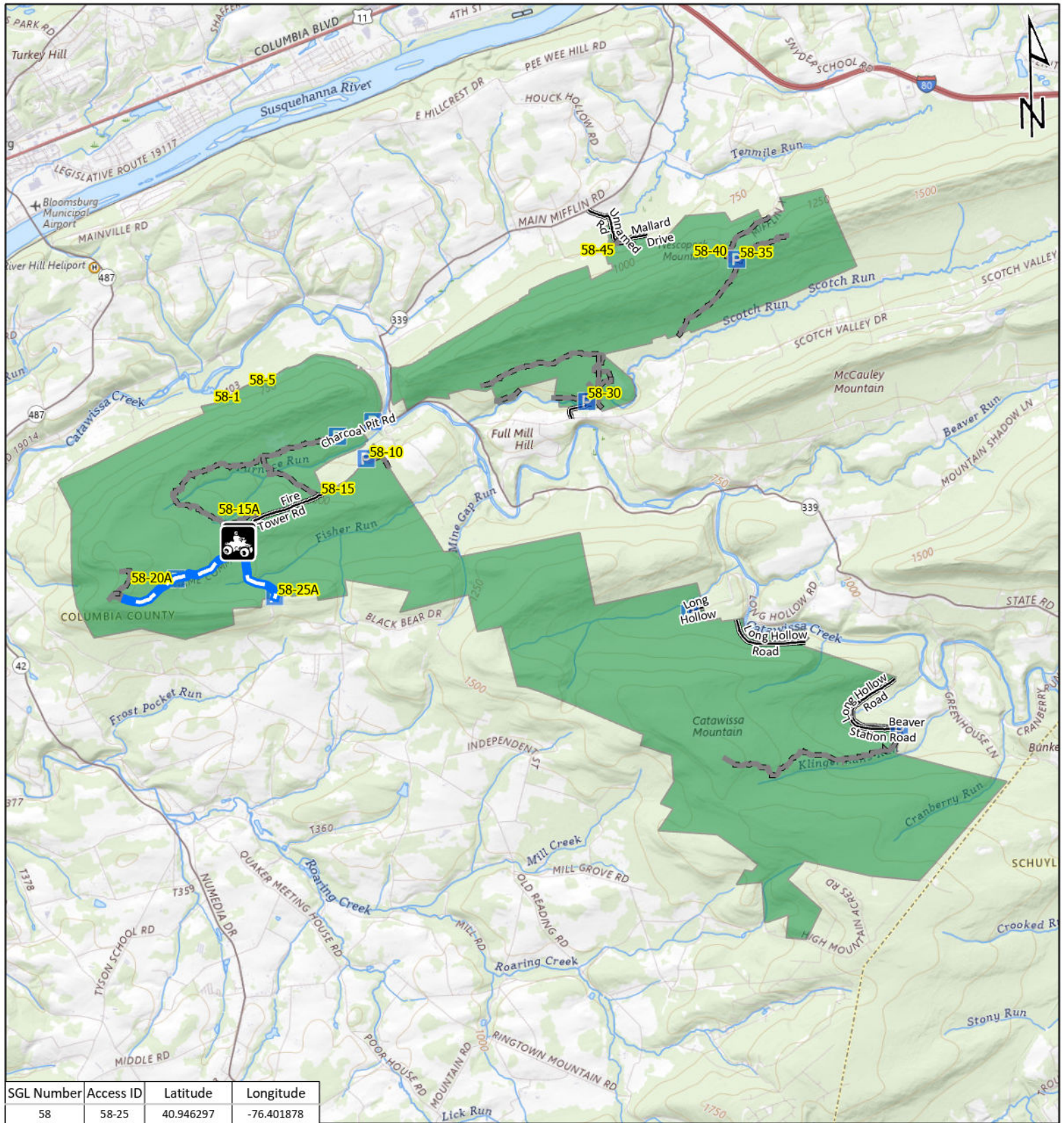
-   ATV ACCESS
-   VEHICLE ACCESS
-   ATV & VEHICLE
-  ROADS OPEN TO VEHICLE TRAFFIC
-  ROADS SEASONALLY OPEN TO VEHICLE TRAFFIC
-  ROADS CLOSED TO VEHICLE TRAFFIC



STATE GAME LAND 57

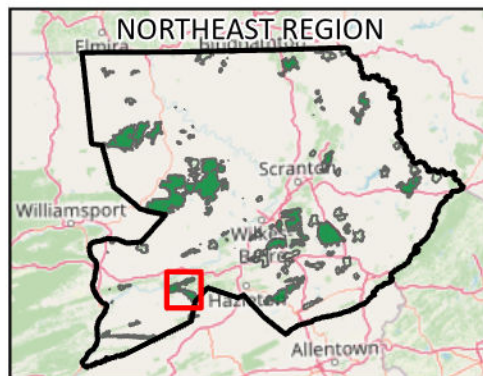


It is unlawful to ride ATV's on state game lands, except on designated roads open for persons issued a Disabled Person Permit, and who have a valid registration from the Department of Conservation & Natural Resources.

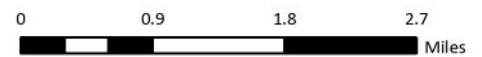
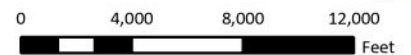


EMERGENCY RESPONSE POINTS

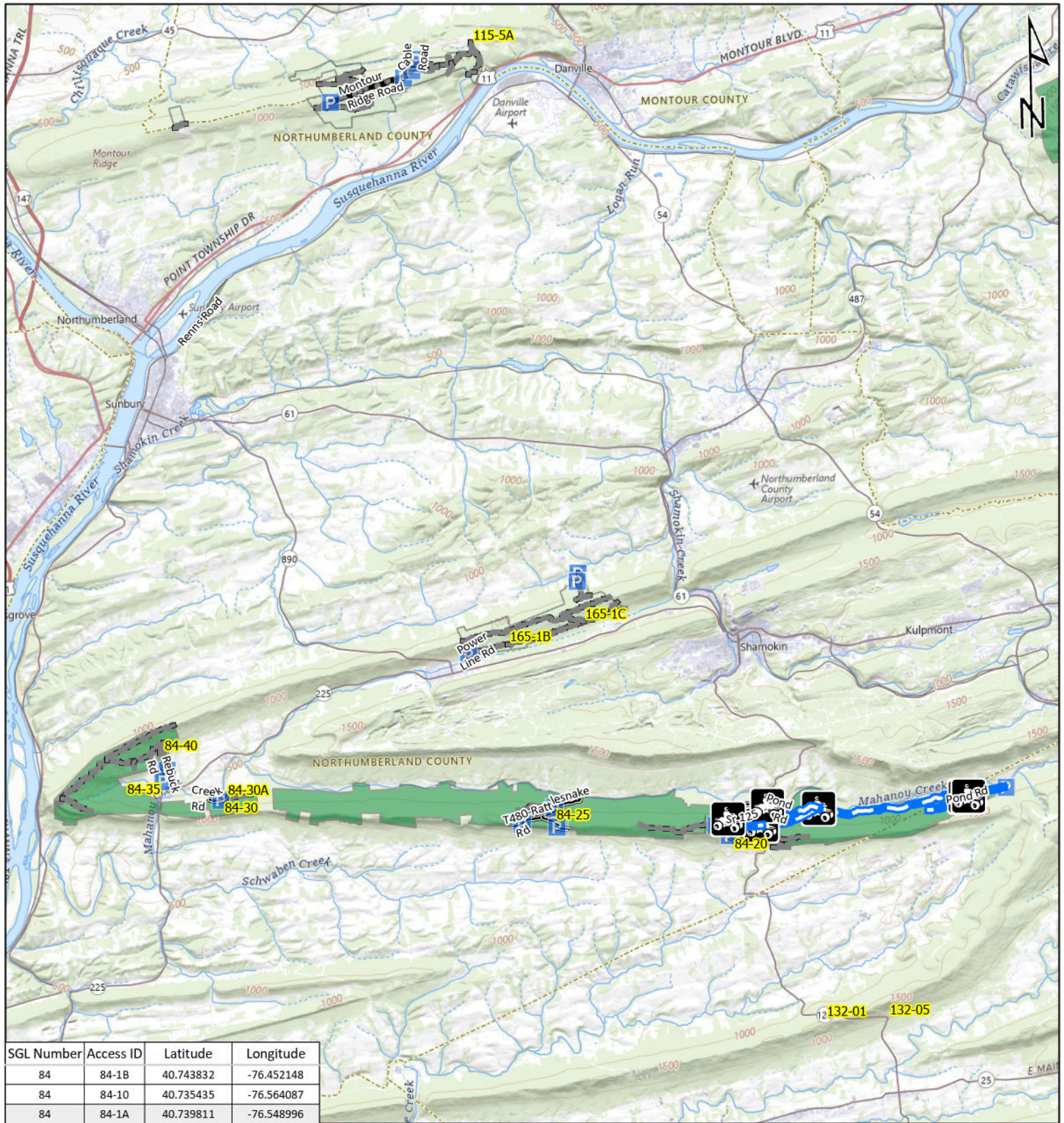
- ATV ACCESS**
- VEHICLE ACCESS**
- ATV & VEHICLE**
- ROADS OPEN TO VEHICLE TRAFFIC**
- ROADS SEASONALLY OPEN TO VEHICLE TRAFFIC**
- ROADS CLOSED TO VEHICLE TRAFFIC**



STATE GAME LAND 58



It is unlawful to ride ATV's on state game lands, except on designated roads open for persons issued a Disabled Person Permit, and who have a valid registration from the Department of Conservation & Natural Resources.

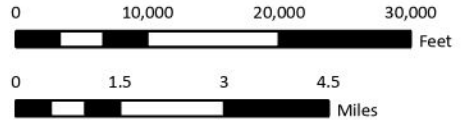


EMERGENCY RESPONSE POINTS

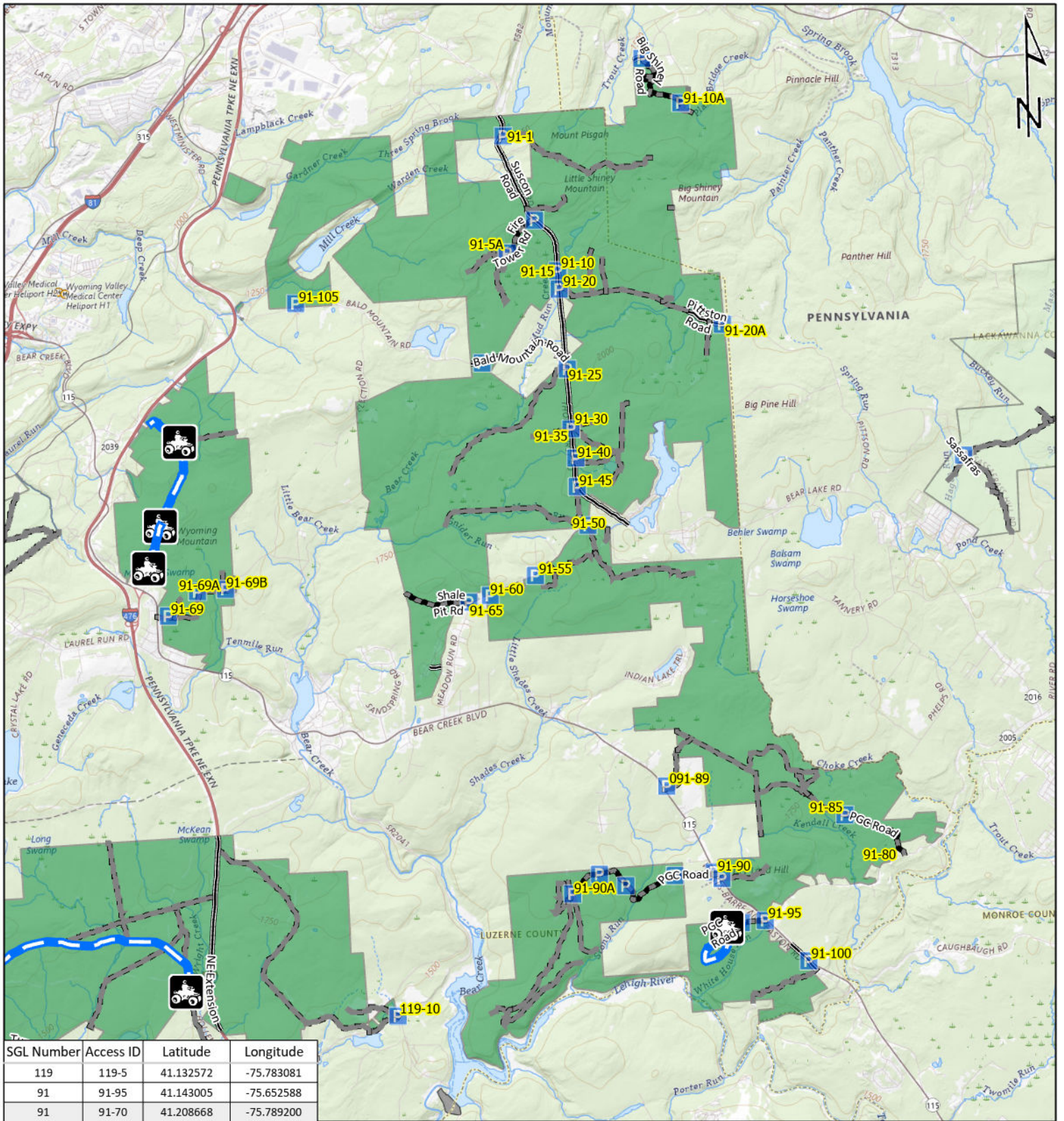
- ATV ACCESS**
- VEHICLE ACCESS**
- ATV & VEHICLE**
- ROADS OPEN TO VEHICLE TRAFFIC**
- ROADS SEASONALLY OPEN TO VEHICLE TRAFFIC**
- ROADS CLOSED TO VEHICLE TRAFFIC**



STATE GAME LAND 84



It is unlawful to ride ATV's on state game lands, except on designated roads open for persons issued a Disabled Person Permit, and who have a valid registration from the Department of Conservation & Natural Resources.

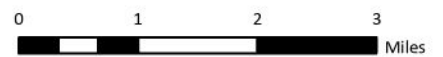
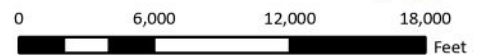


EMERGENCY RESPONSE POINTS

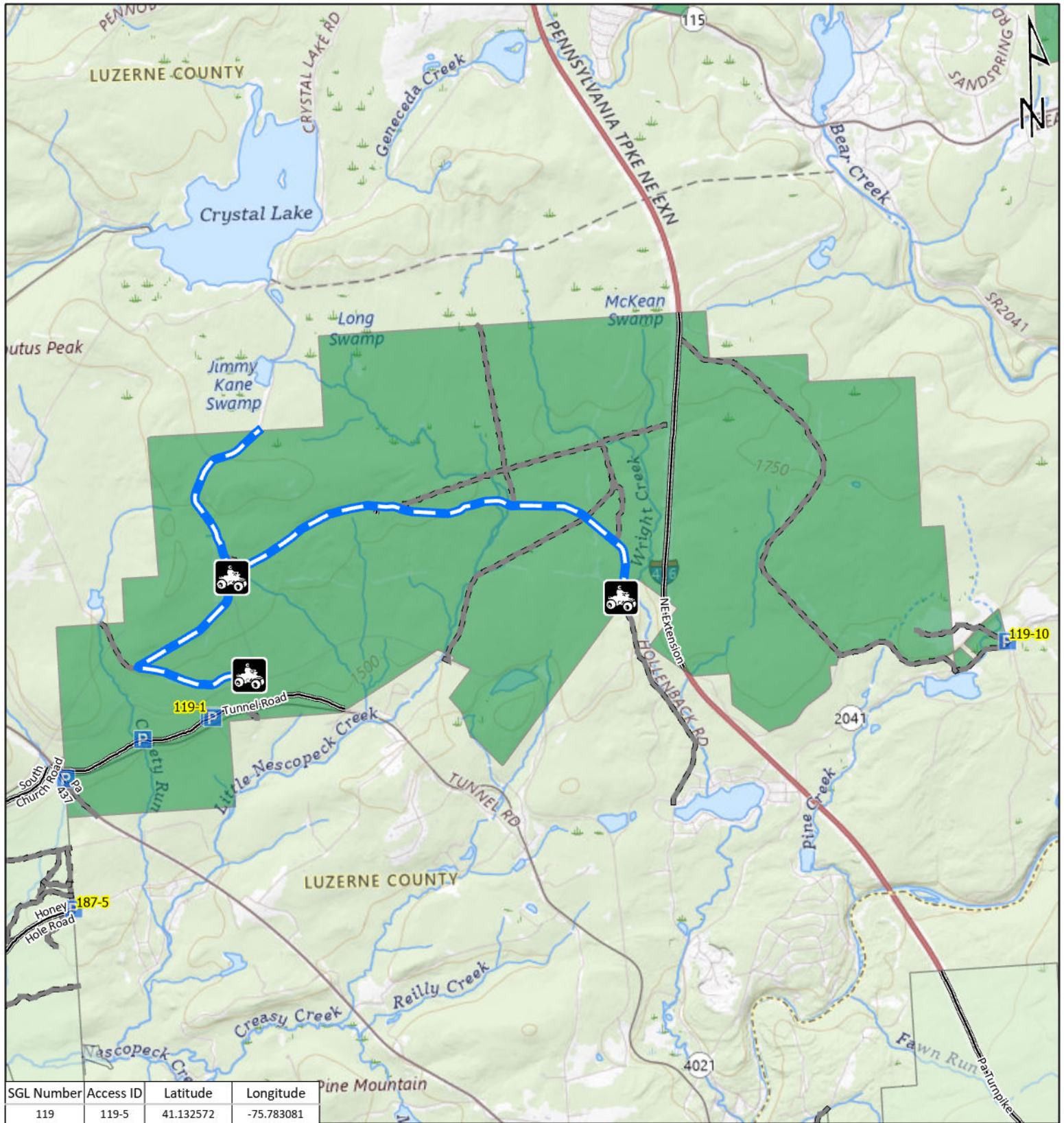
- ATV ACCESS**
- VEHICLE ACCESS**
- ATV & VEHICLE**
- ROADS OPEN TO VEHICLE TRAFFIC**
- ROADS SEASONALLY OPEN TO VEHICLE TRAFFIC**
- ROADS CLOSED TO VEHICLE TRAFFIC**



STATE GAME LAND 91



It is unlawful to ride ATV's on state game lands, except on designated roads open for persons issued a Disabled Person Permit, and who have a valid registration from the Department of Conservation & Natural Resources.



EMERGENCY RESPONSE POINTS

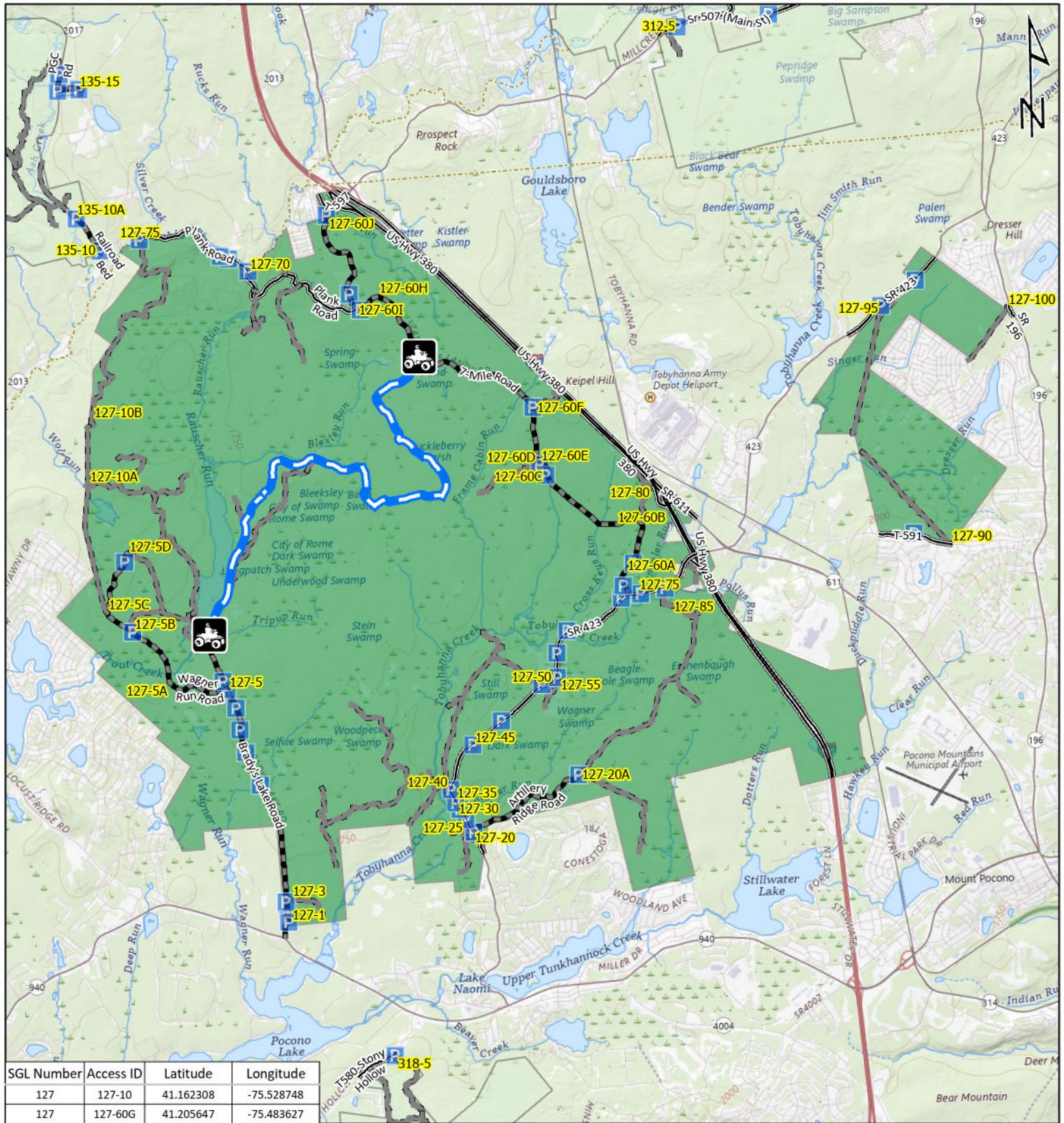
- ATV ACCESS
- VEHICLE ACCESS
- ATV & VEHICLE
- ROADS OPEN TO VEHICLE TRAFFIC
- ROADS SEASONALLY OPEN TO VEHICLE TRAFFIC
- ROADS CLOSED TO VEHICLE TRAFFIC



STATE GAME LAND 119



It is unlawful to ride ATV's on state game lands, except on designated roads open for persons issued a Disabled Person Permit, and who have a valid registration from the Department of Conservation & Natural Resources.



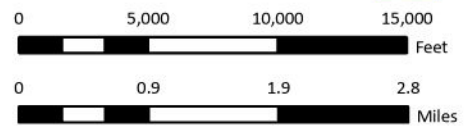
SGL Number	Access ID	Latitude	Longitude
127	127-10	41.162308	-75.528748
127	127-60G	41.205647	-75.483627

EMERGENCY RESPONSE POINTS

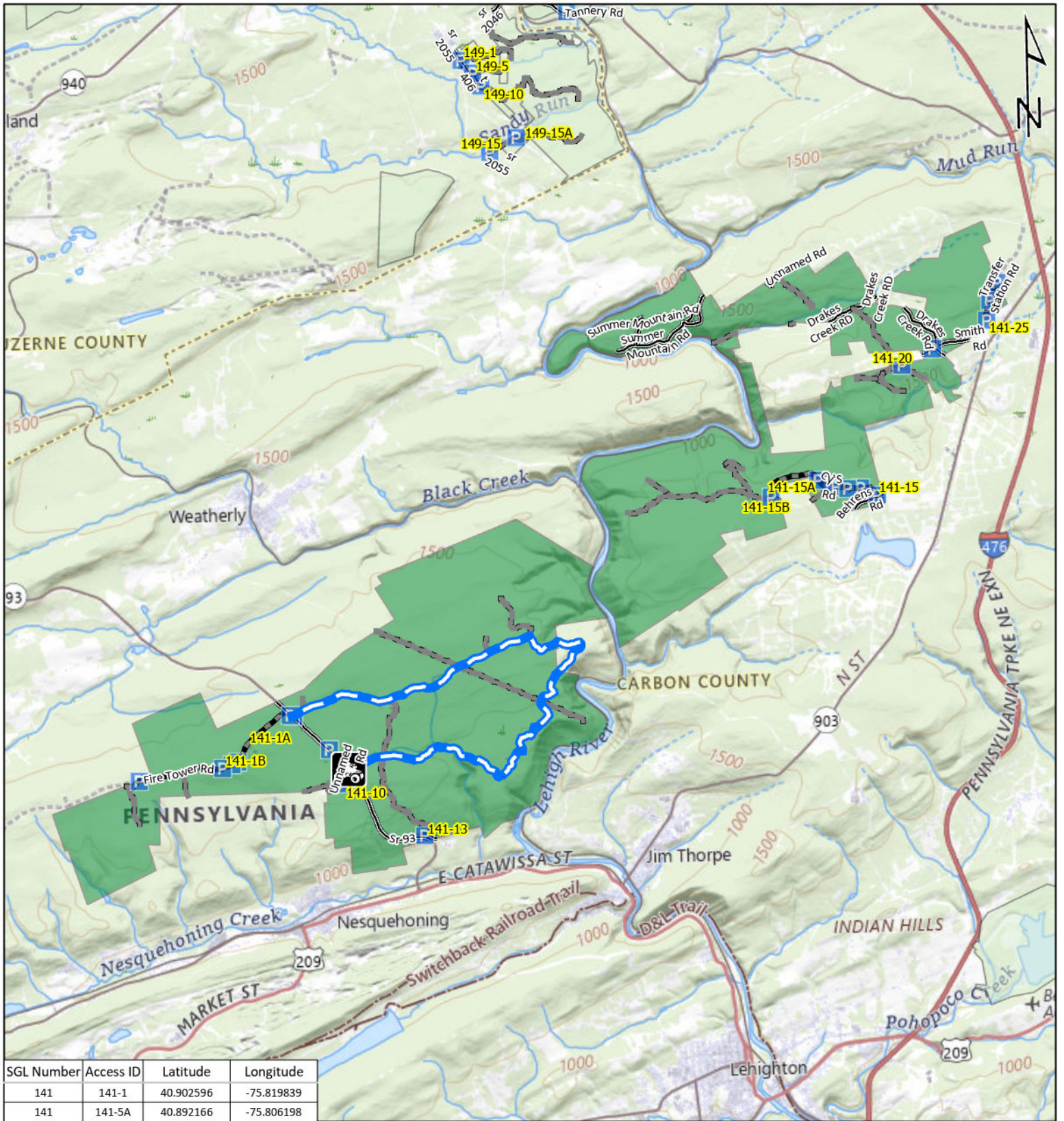
- ATV ACCESS
- VEHICLE ACCESS
- ATV & VEHICLE
- ROADS OPEN TO VEHICLE TRAFFIC
- ROADS SEASONALLY OPEN TO VEHICLE TRAFFIC
- ROADS CLOSED TO VEHICLE TRAFFIC



STATE GAME LAND 127




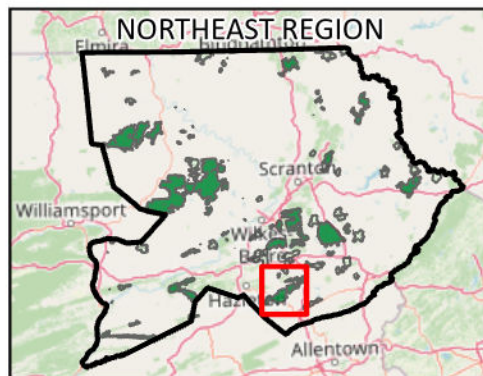
It is unlawful to ride ATV's on state game lands, except on designated roads open for persons issued a Disabled Person Permit, and who have a valid registration from the Department of Conservation & Natural Resources.



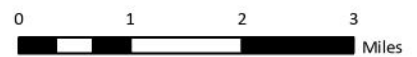
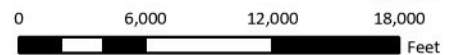
SGL Number	Access ID	Latitude	Longitude
141	141-1	40.902596	-75.819839
141	141-5A	40.892166	-75.806198

EMERGENCY RESPONSE POINTS

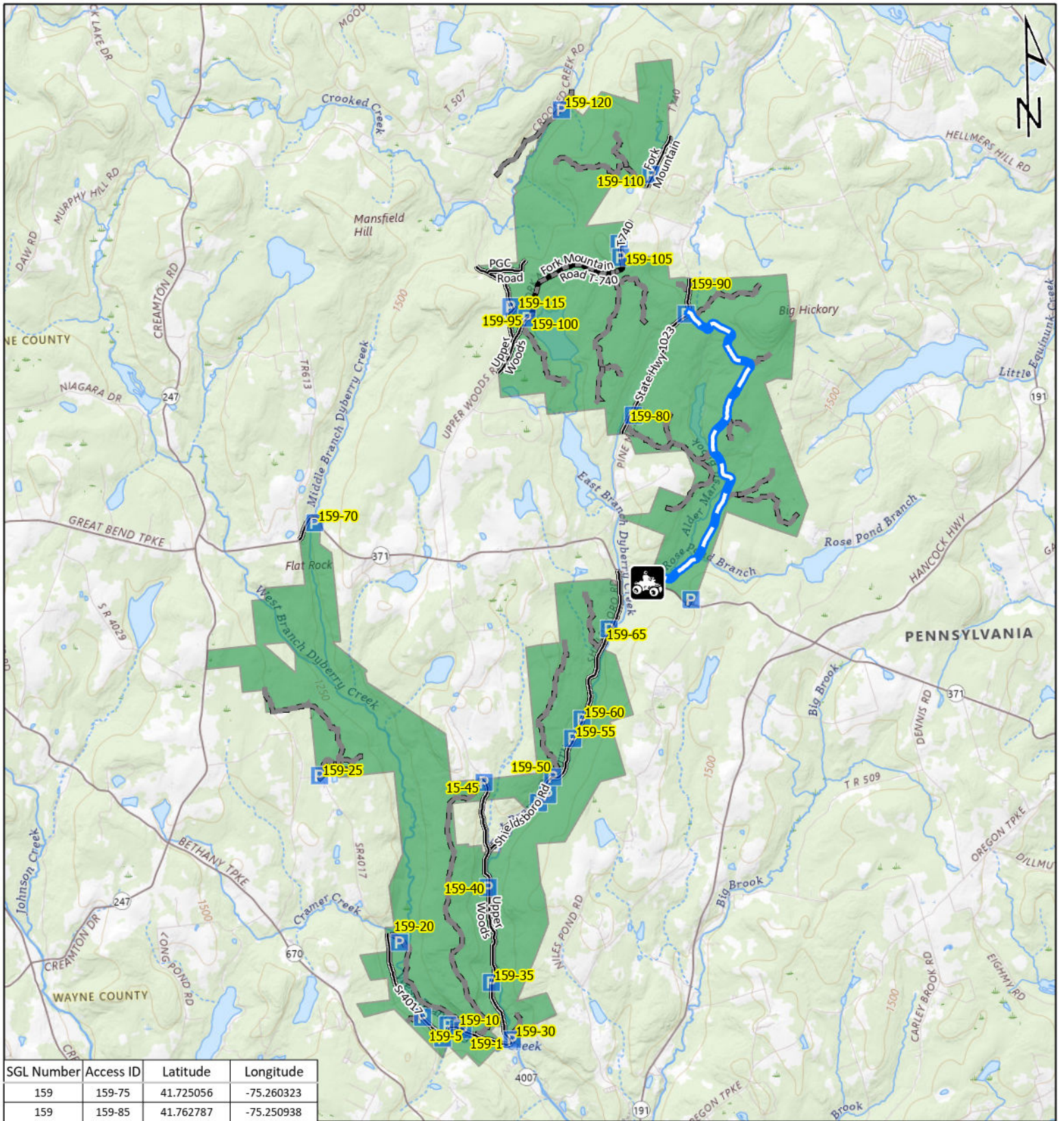
-   ATV ACCESS
-   VEHICLE ACCESS
-   ATV & VEHICLE
-  ROADS OPEN TO VEHICLE TRAFFIC
-  ROADS SEASONALLY OPEN TO VEHICLE TRAFFIC
-  ROADS CLOSED TO VEHICLE TRAFFIC



STATE GAME LAND 141



It is unlawful to ride ATV's on state game lands, except on designated roads open for persons issued a Disabled Person Permit, and who have a valid registration from the Department of Conservation & Natural Resources.



SGL Number	Access ID	Latitude	Longitude
159	159-75	41.725056	-75.260323
159	159-85	41.762787	-75.250938

EMERGENCY RESPONSE POINTS

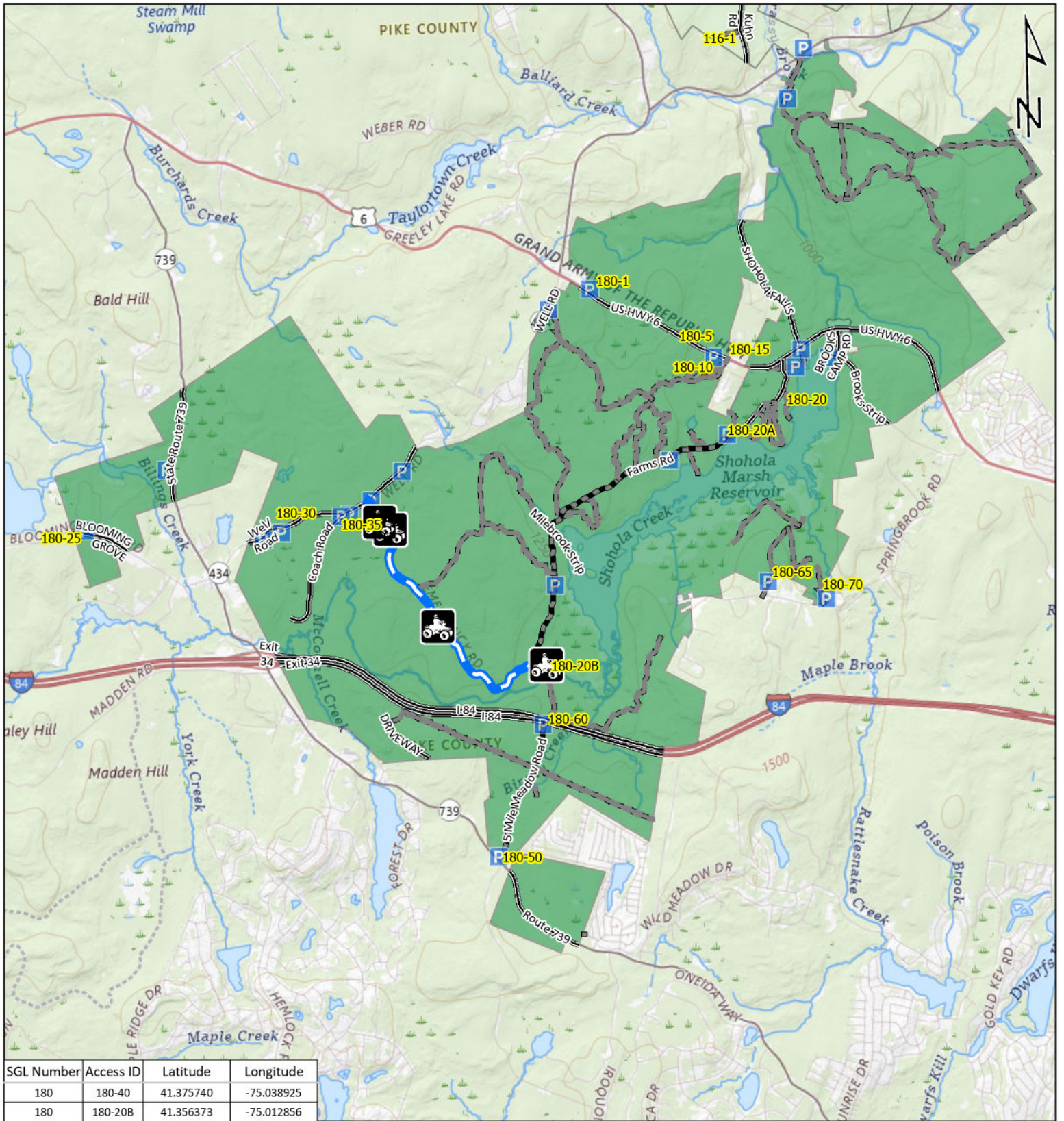
- ATV ACCESS
- VEHICLE ACCESS
- ATV & VEHICLE
- ROADS OPEN TO VEHICLE TRAFFIC
- ROADS SEASONALLY OPEN TO VEHICLE TRAFFIC
- ROADS CLOSED TO VEHICLE TRAFFIC



STATE GAME LAND 159



It is unlawful to ride ATV's on state game lands, except on designated roads open for persons issued a Disabled Person Permit, and who have a valid registration from the Department of Conservation & Natural Resources.



SGL Number	Access ID	Latitude	Longitude
180	180-40	41.375740	-75.038925
180	180-20B	41.356373	-75.012856

EMERGENCY RESPONSE POINTS

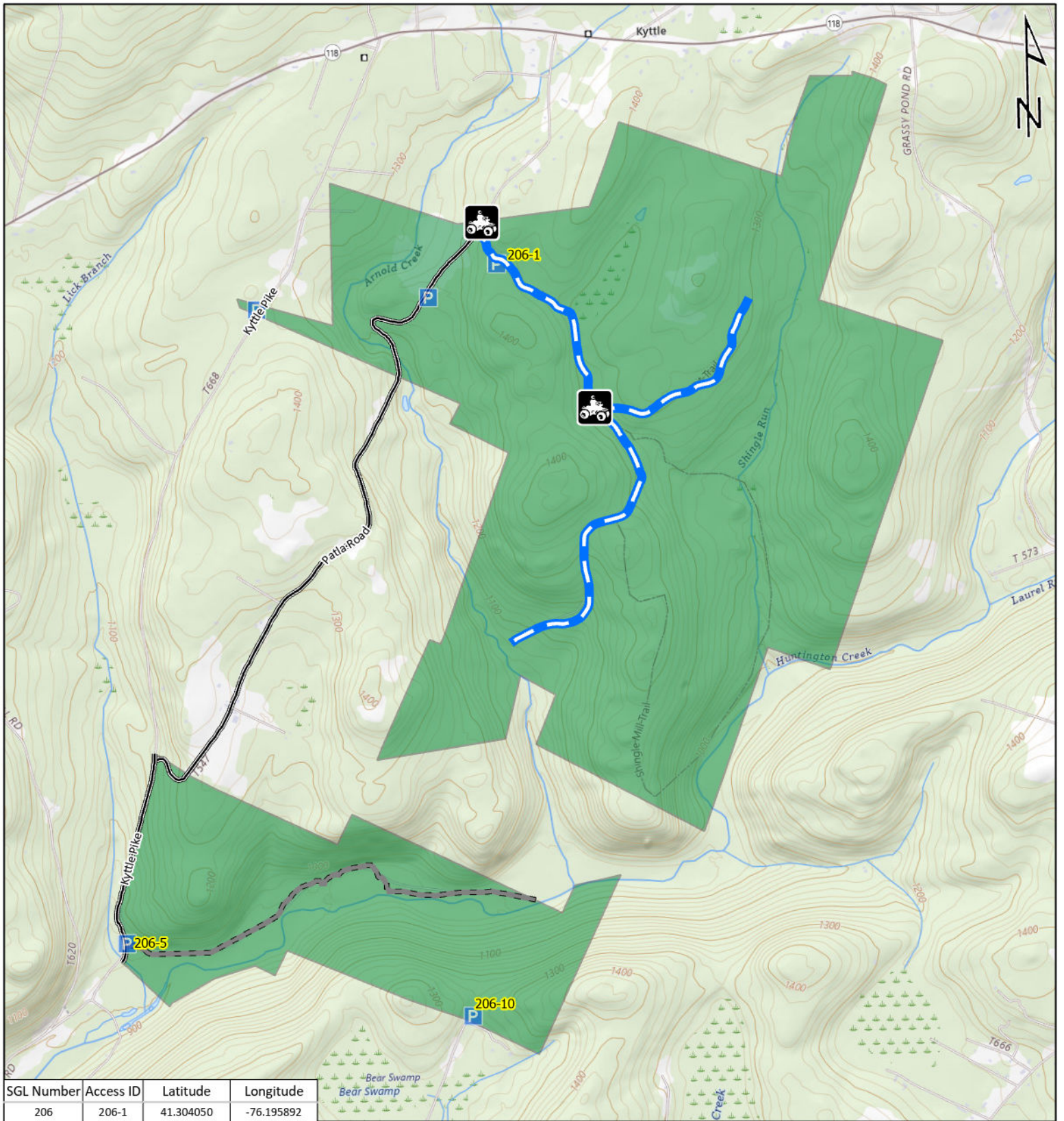
- ATV ACCESS
- VEHICLE ACCESS
- ATV & VEHICLE
- ROADS OPEN TO VEHICLE TRAFFIC
- ROADS SEASONALLY OPEN TO VEHICLE TRAFFIC
- ROADS CLOSED TO VEHICLE TRAFFIC



STATE GAME LAND 180



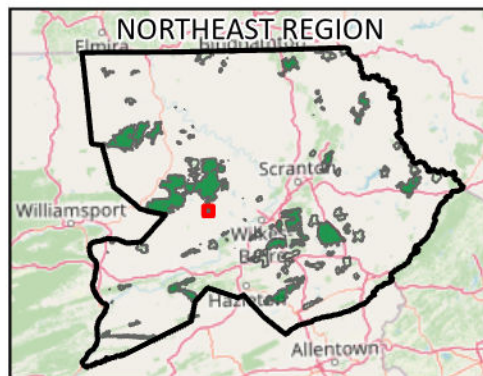
It is unlawful to ride ATV's on state game lands, except on designated roads open for persons issued a Disabled Person Permit, and who have a valid registration from the Department of Conservation & Natural Resources.



SGL Number	Access ID	Latitude	Longitude
206	206-1	41.304050	-76.195892

EMERGENCY RESPONSE POINTS

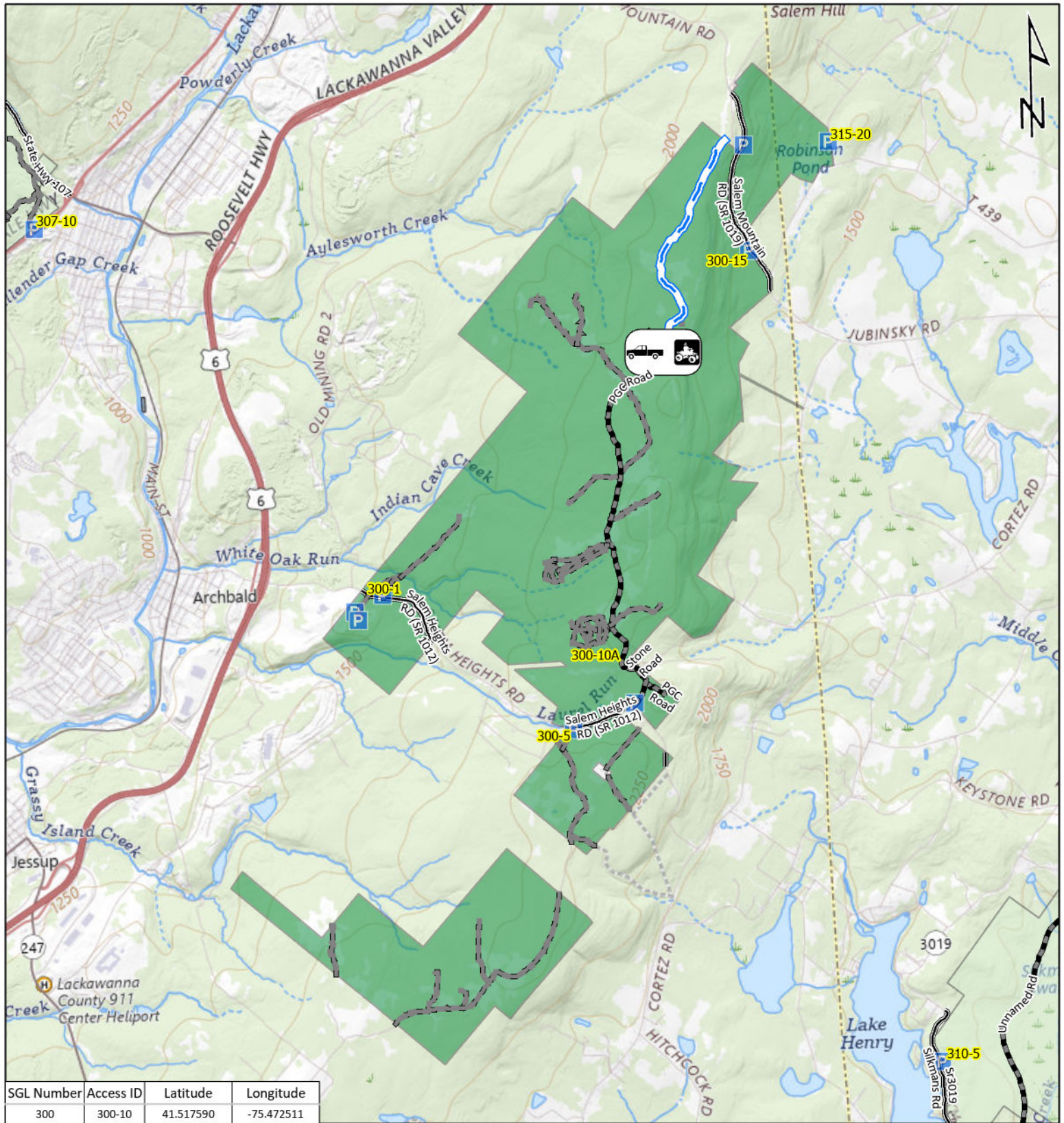
- ATV ACCESS**
- VEHICLE ACCESS**
- ATV & VEHICLE**
- ROADS OPEN TO VEHICLE TRAFFIC**
- ROADS SEASONALLY OPEN TO VEHICLE TRAFFIC**
- ROADS CLOSED TO VEHICLE TRAFFIC**



**STATE GAME
LAND 206**



It is unlawful to ride ATV's on state game lands, except on designated roads open for persons issued a Disabled Person Permit, and who have a valid registration from the Department of Conservation & Natural Resources.



EMERGENCY RESPONSE POINTS

- ATV ACCESS
- VEHICLE ACCESS
- ATV & VEHICLE
- ROADS OPEN TO VEHICLE TRAFFIC
- ROADS SEASONALLY OPEN TO VEHICLE TRAFFIC
- ROADS CLOSED TO VEHICLE TRAFFIC



STATE GAME LAND 300



It is unlawful to ride ATV's on state game lands, except on designated roads open for persons issued a Disabled Person Permit, and who have a valid registration from the Department of Conservation & Natural Resources.