



PENNSYLVANIA GAME COMMISSION

NORTHWEST REGION

1509 PITTSBURGH RD, FRANKLIN PA 16323 | 1-833-742-4868 (PGC HUNT) 1-833-742-9453 (PGC WILD)

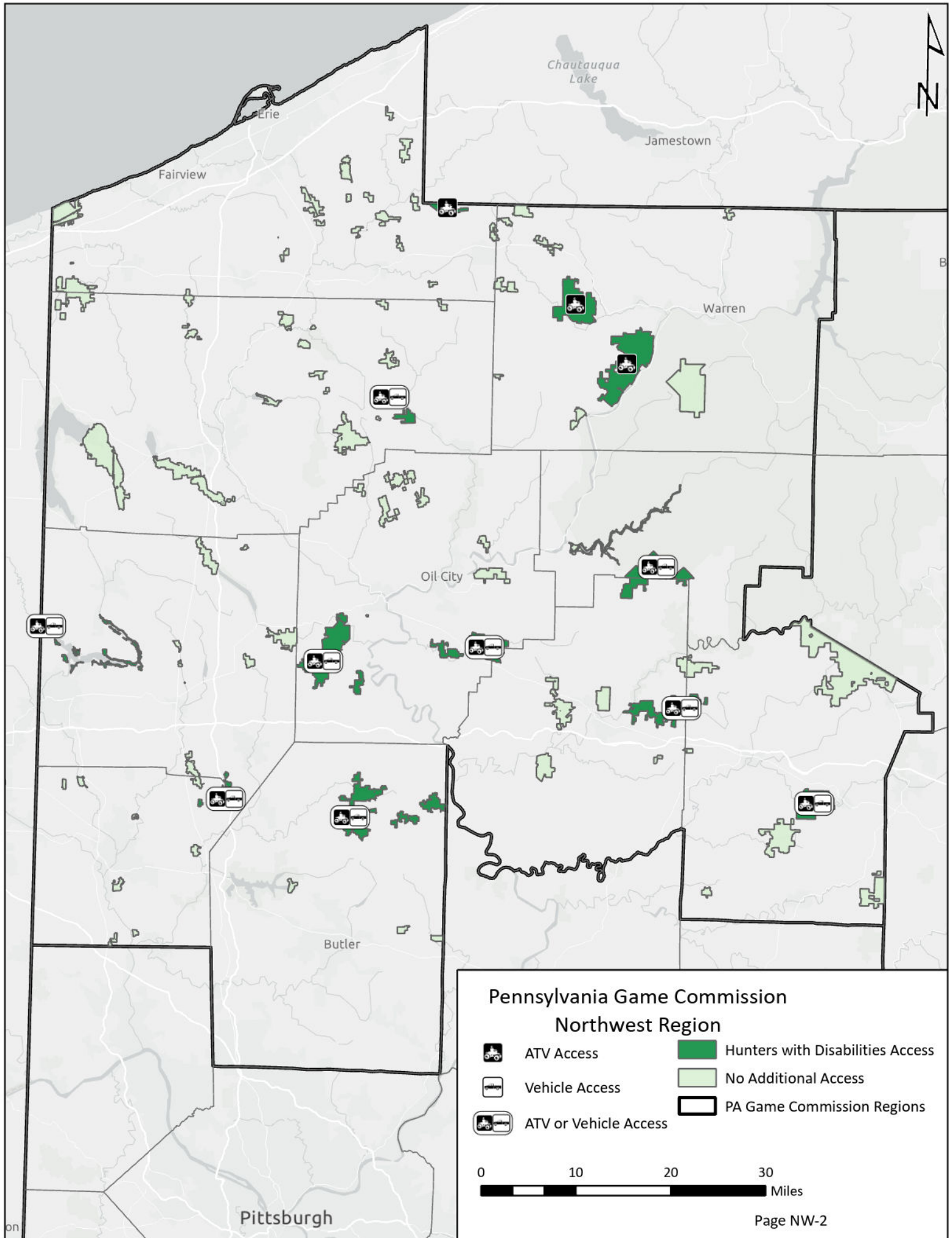
Northwest Region



It is unlawful to ride ATVs on state game lands, except on designated roads open for persons issued a Disabled Persons Permit, and who have a valid registration from the Department of Conservation & Natural Resources.

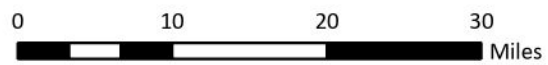
Table of Contents

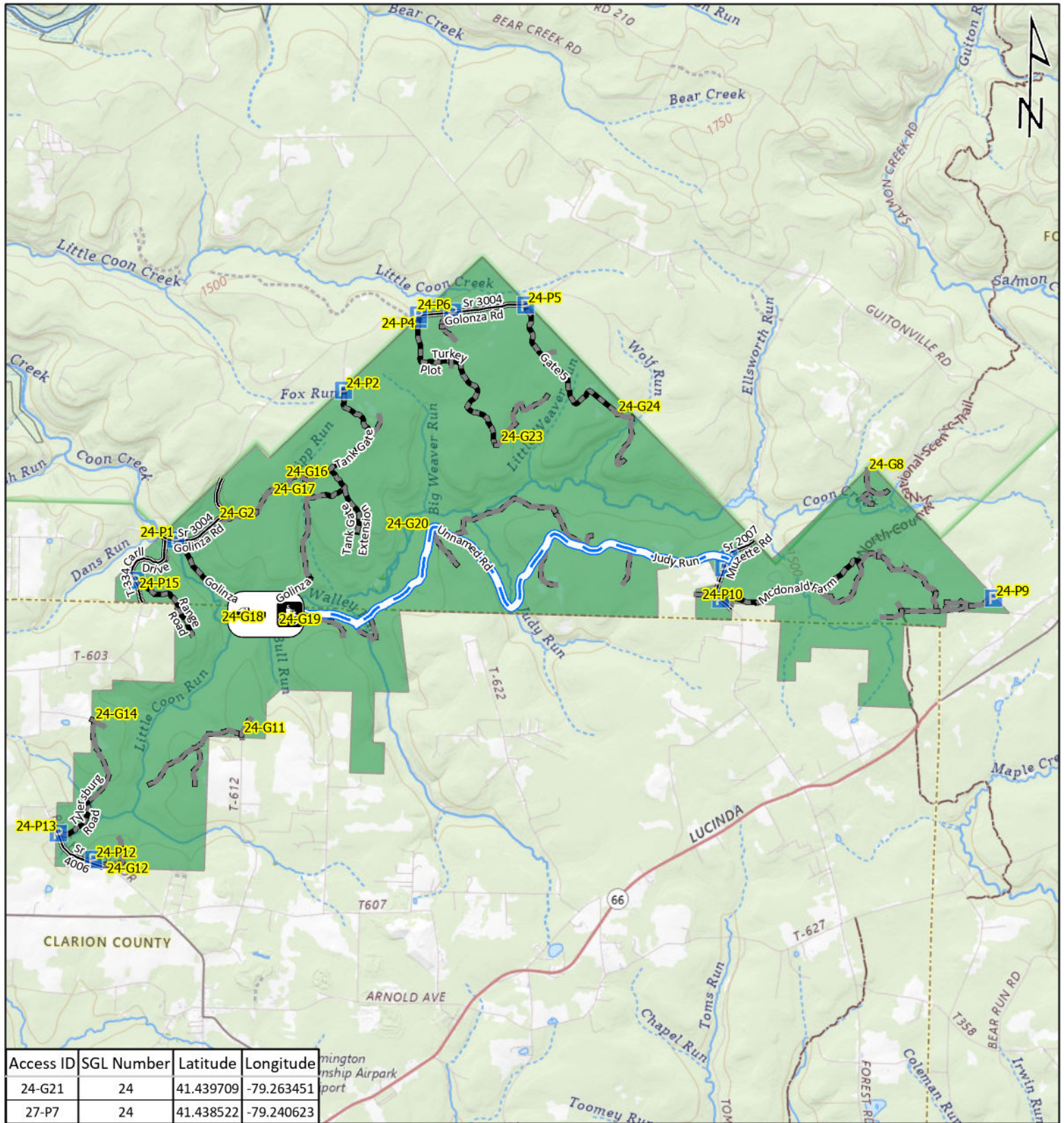
Northwest Region Overview Map	NW-2
State Game Lands 24	Clarion and Forest counties.....	NW-3
State Game Lands 39	Venango County.....	NW-4
State Game Lands 45	Clarion and Venango counties.....	NW-5
State Game Lands 74	Clarion and Jefferson counties	NW-6
State Game Lands 86	Warren County.....	NW-7
State Game Lands 95	Butler County	NW-8
State Game Lands 122	Crawford County	NW-9
State Game Lands 143	Warren County.....	NW-10
State Game Lands 151	Lawrence and Mercer counties	NW-11
State Game Lands 154	Erie County.....	NW-12
State Game Lands 244	Jefferson County	NW-13
Shenango River Lake 2415	Mercer County	NW-14



**Pennsylvania Game Commission
Northwest Region**

-  ATV Access
-  Vehicle Access
-  ATV or Vehicle Access
-  Hunters with Disabilities Access
-  No Additional Access
-  PA Game Commission Regions

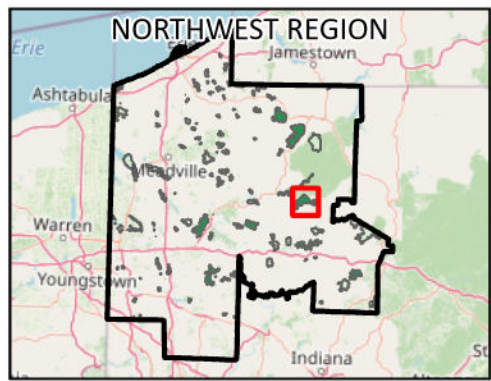




Access ID	SGL Number	Latitude	Longitude
24-G21	24	41.439709	-79.263451
27-P7	24	41.438522	-79.240623

Emergency Response Points

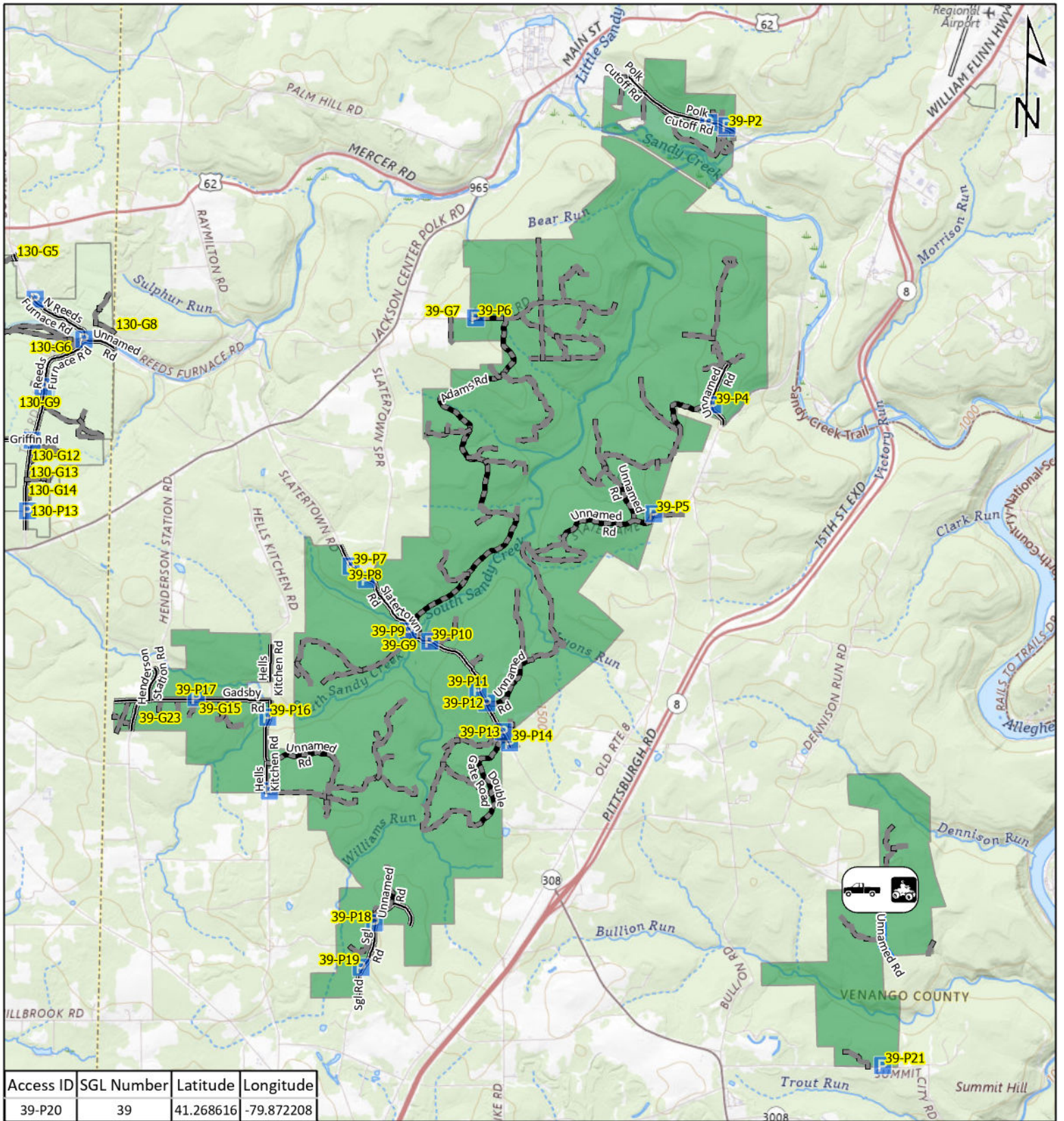
- ATV Access
- Vehicle Access
- ATV & Vehicle Access
- Roads Open to Vehicle Traffic
- Roads Seasonally Open to Vehicle Traffic
- Roads Closed to Vehicle Traffic



STATE GAME LAND 24



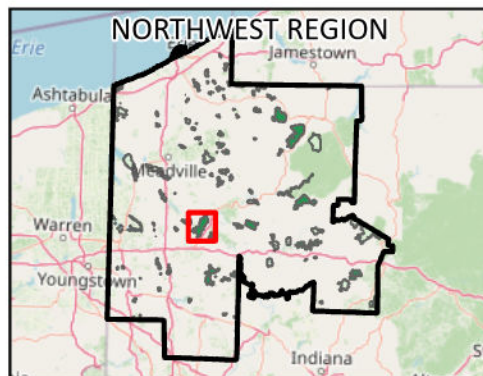
It is unlawful to ride ATV's on state game lands, except on designated roads open for persons issued a Disabled Person Permit, and who have a valid registration from the Department of Conservation & Natural Resources.



Access ID	SGL Number	Latitude	Longitude
39-P20	39	41.268616	-79.872208

Emergency Response Points

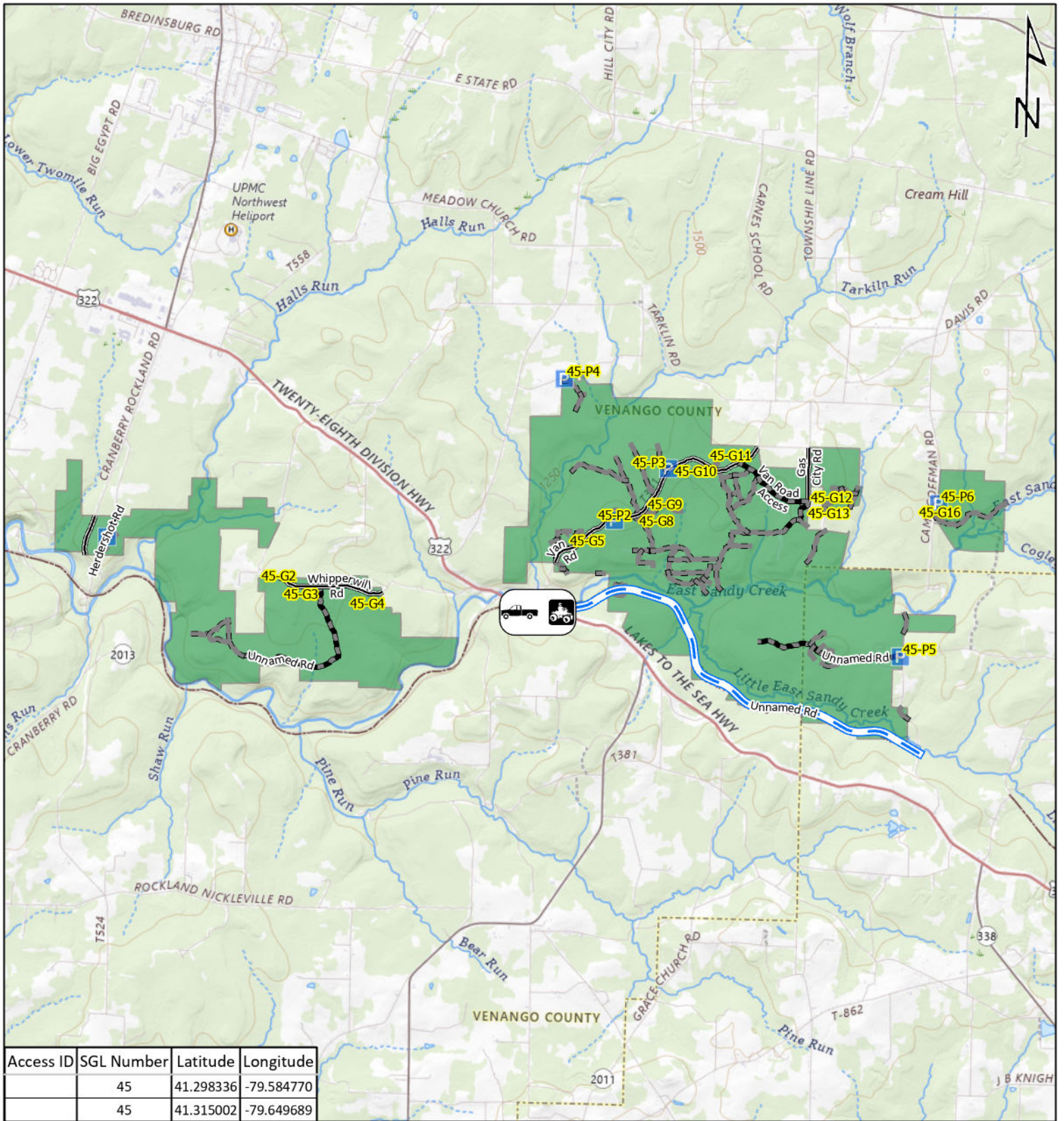
- ATV Access
- Vehicle Access
- ATV & Vehicle Access
- Roads Open to Vehicle Traffic
- Roads Seasonally Open to Vehicle Traffic
- Roads Closed to Vehicle Traffic



STATE GAME LAND 39



It is unlawful to ride ATV's on state game lands, except on designated roads open for persons issued a Disabled Person Permit, and who have a valid registration from the Department of Conservation & Natural Resources.



Access ID	SGL Number	Latitude	Longitude
45	45	41.298336	-79.584770
45	45	41.315002	-79.649689

Emergency Response Points

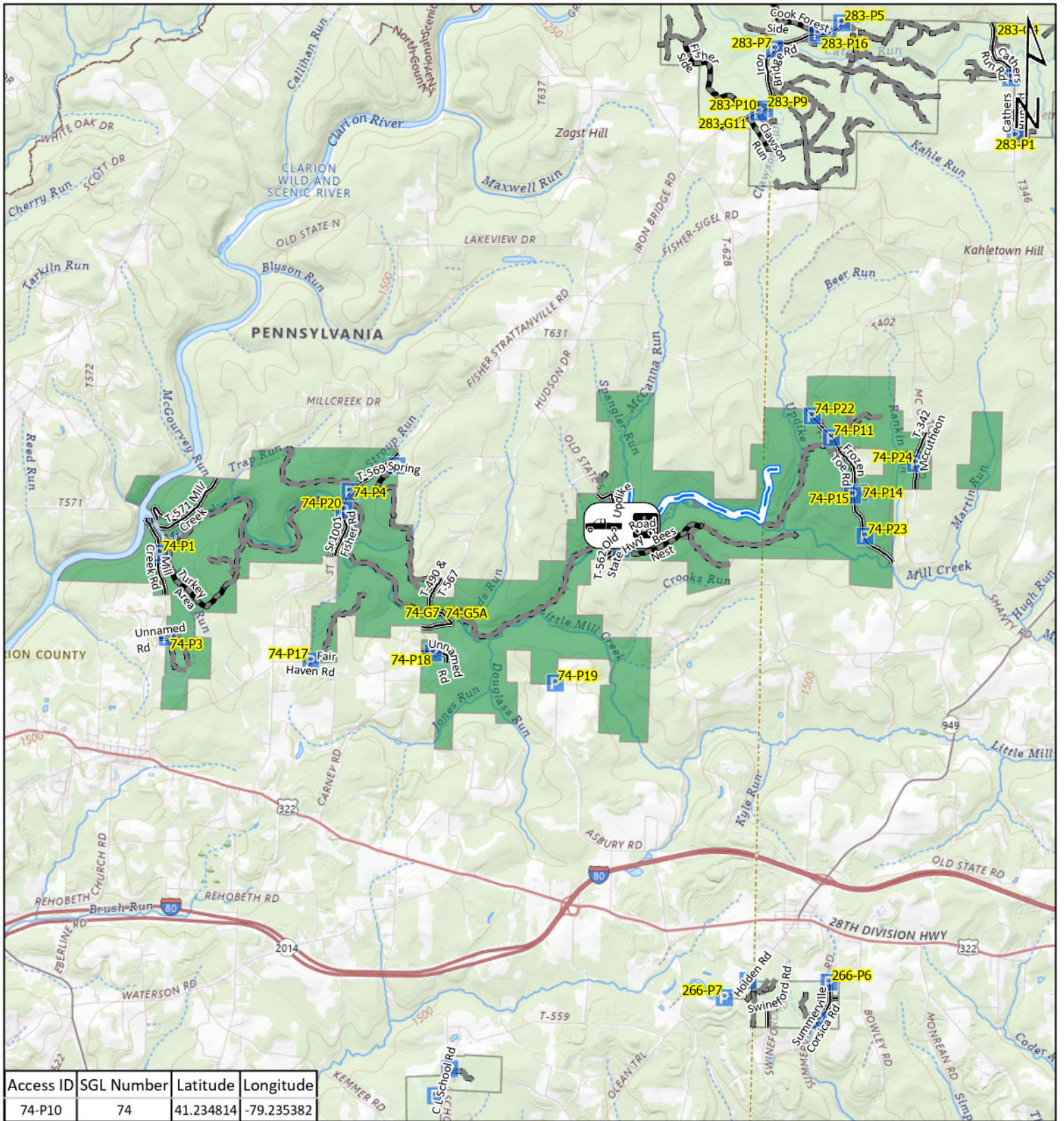
-  ATV Access
-  Vehicle Access
-  ATV & Vehicle Access
-  Roads Open to Vehicle Traffic
-  Roads Seasonally Open to Vehicle Traffic
-  Roads Closed to Vehicle Traffic



STATE GAME LAND 45



It is unlawful to ride ATV's on state game lands, except on designated roads open for persons issued a Disabled Person Permit, and who have a valid registration from the Department of Conservation & Natural Resources.

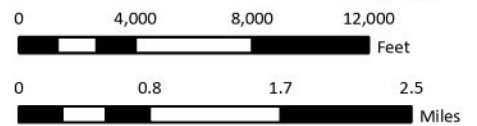


Emergency Response Points

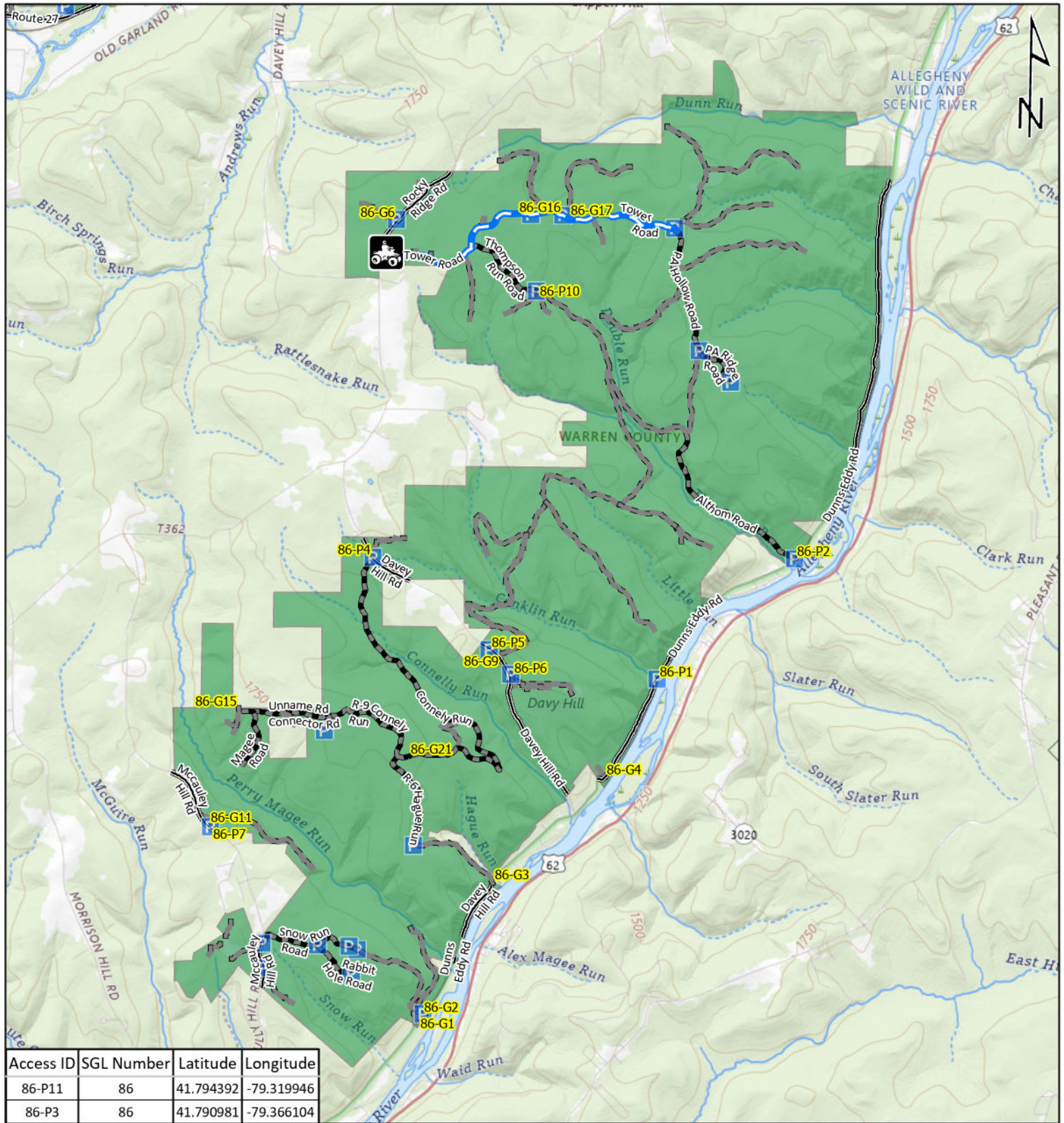
- ATV Access
- Vehicle Access
- ATV & Vehicle Access
- Roads Open to Vehicle Traffic
- Roads Seasonally Open to Vehicle Traffic
- Roads Closed to Vehicle Traffic



STATE GAME LAND 74



It is unlawful to ride ATV's on state game lands, except on designated roads open for persons issued a Disabled Person Permit, and who have a valid registration from the Department of Conservation & Natural Resources.



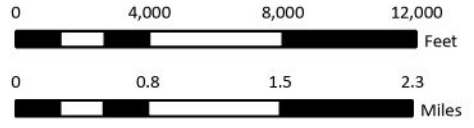
Access ID	SGL Number	Latitude	Longitude
86-P11	86	41.794392	-79.319946
86-P3	86	41.790981	-79.366104

Emergency Response Points

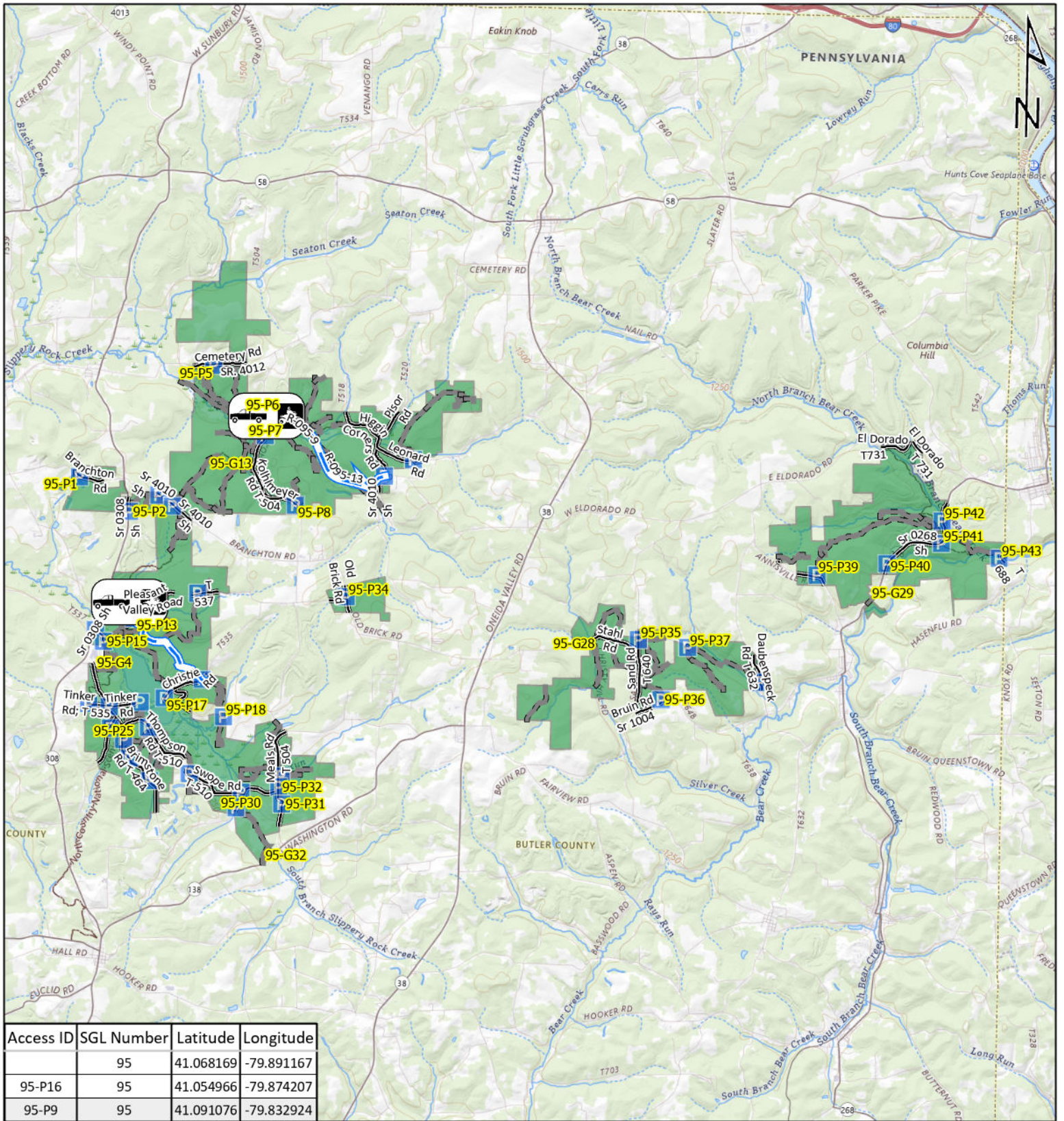
-   ATV Access
-   Vehicle Access
-   ATV & Vehicle Access
-  Roads Open to Vehicle Traffic
-  Roads Seasonally Open to Vehicle Traffic
-  Roads Closed to Vehicle Traffic



STATE GAME LAND 86

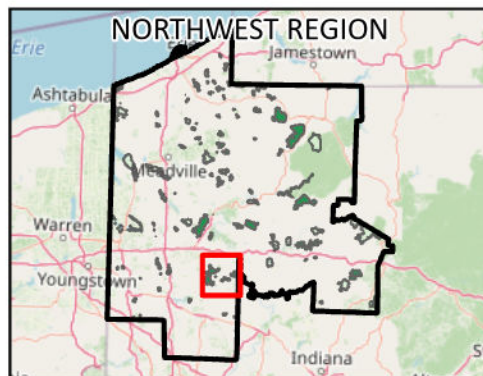


It is unlawful to ride ATV's on state game lands, except on designated roads open for persons issued a Disabled Person Permit, and who have a valid registration from the Department of Conservation & Natural Resources.

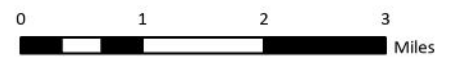
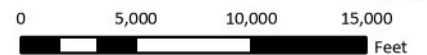


Emergency Response Points

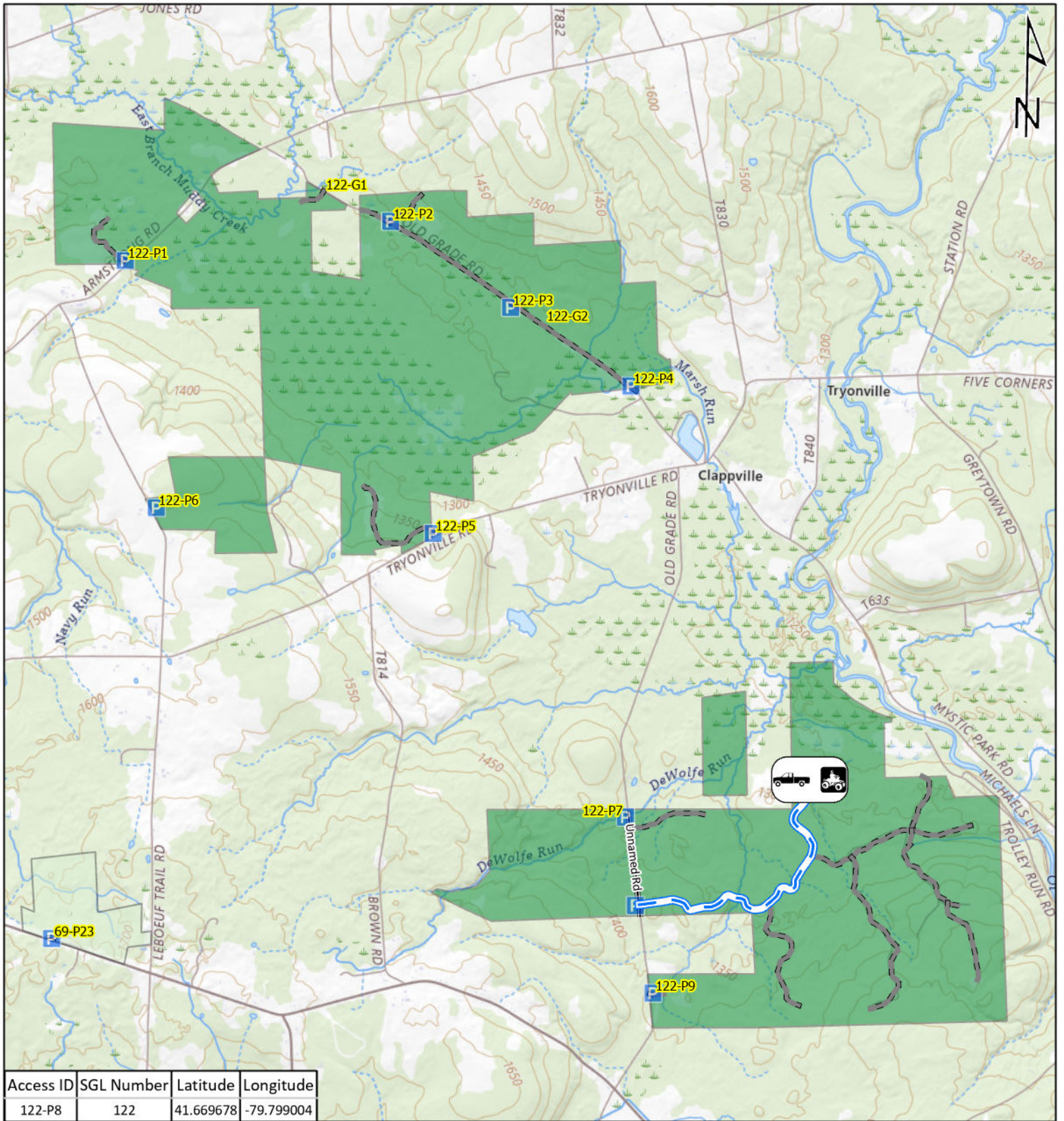
- ATV Access
- Vehicle Access
- ATV & Vehicle Access
- Roads Open to Vehicle Traffic
- Roads Seasonally Open to Vehicle Traffic
- Roads Closed to Vehicle Traffic



STATE GAME LAND 95



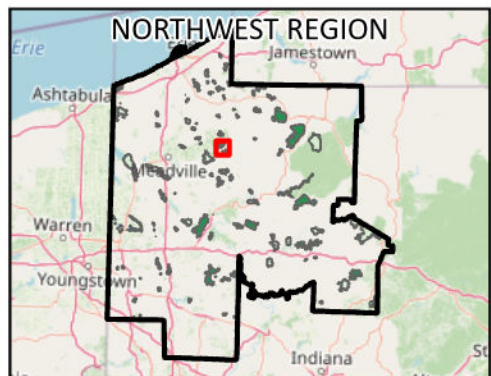
It is unlawful to ride ATV's on state game lands, except on designated roads open for persons issued a Disabled Person Permit, and who have a valid registration from the Department of Conservation & Natural Resources.



Access ID	SGL Number	Latitude	Longitude
122-P8	122	41.669678	-79.799004

Emergency Response Points

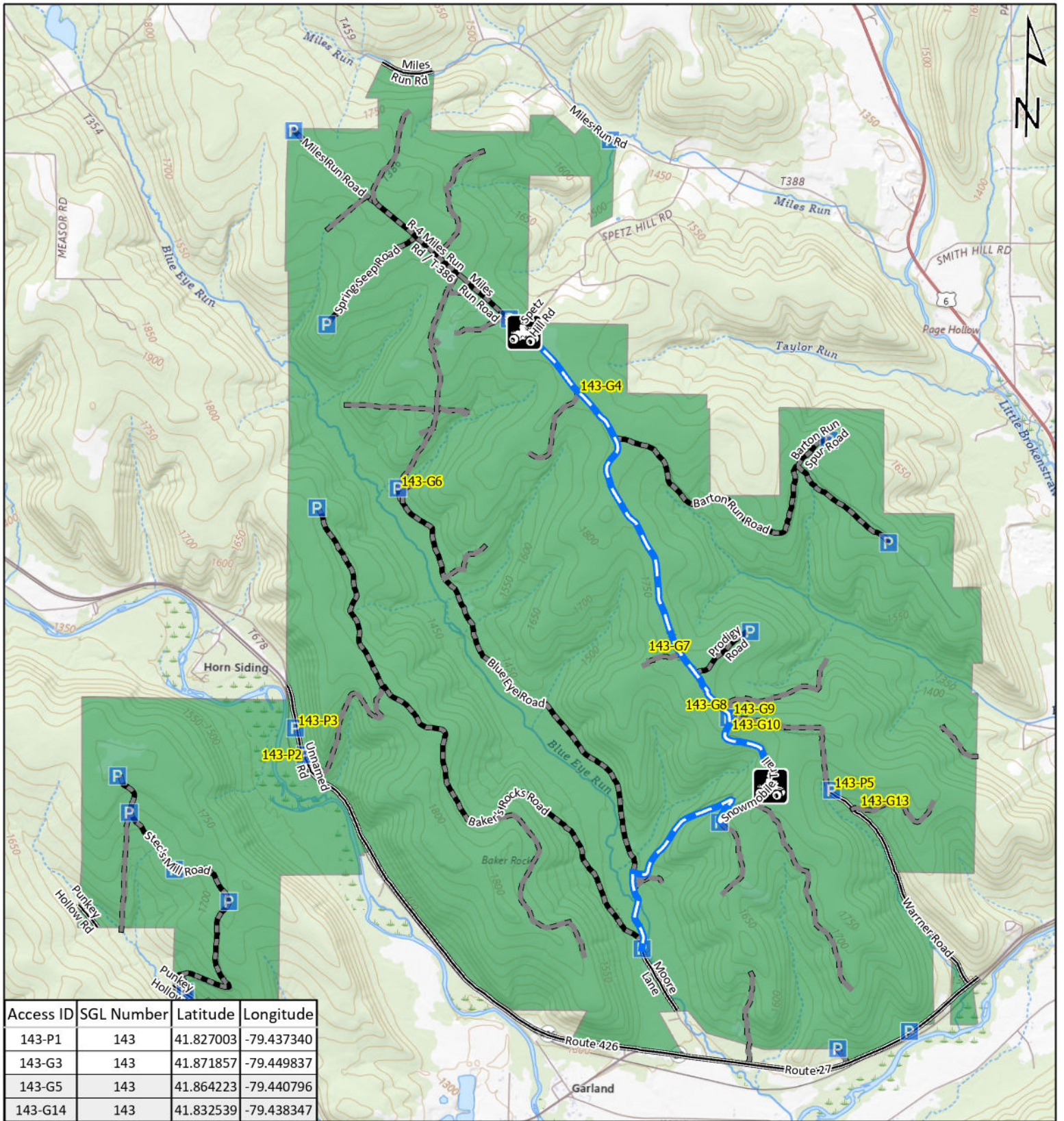
-   ATV Access
-   Vehicle Access
-   ATV & Vehicle Access
-  Roads Open to Vehicle Traffic
-  Roads Seasonally Open to Vehicle Traffic
-  Roads Closed to Vehicle Traffic



STATE GAME LAND 122

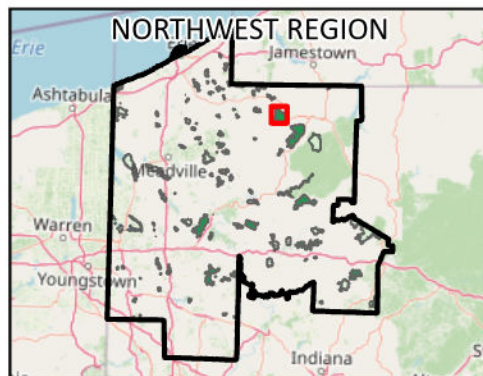


It is unlawful to ride ATV's on state game lands, except on designated roads open for persons issued a Disabled Person Permit, and who have a valid registration from the Department of Conservation & Natural Resources.

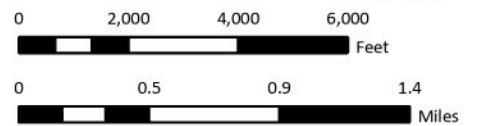


Emergency Response Points

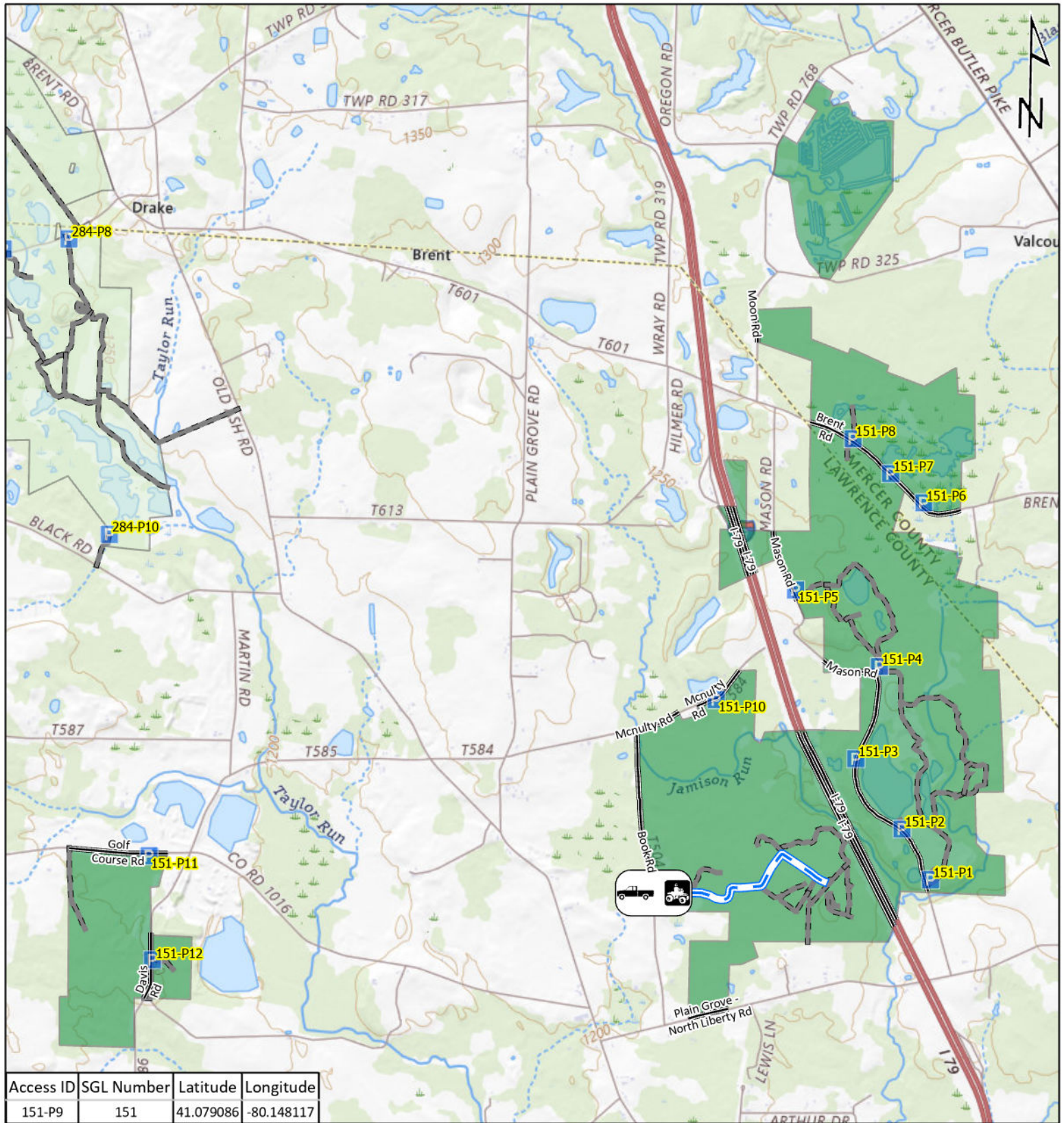
- ATV Access
- Vehicle Access
- ATV & Vehicle Access
- Roads Open to Vehicle Traffic
- Roads Seasonally Open to Vehicle Traffic
- Roads Closed to Vehicle Traffic



STATE GAME LAND 143

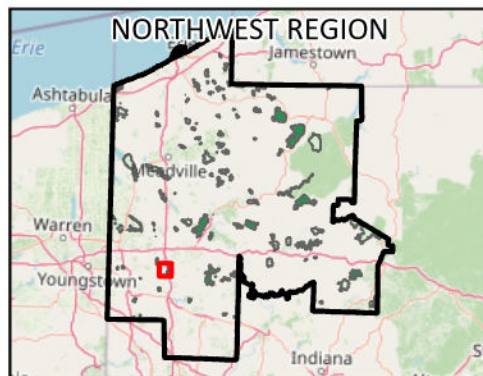


It is unlawful to ride ATV's on state game lands, except on designated roads open for persons issued a Disabled Person Permit, and who have a valid registration from the Department of Conservation & Natural Resources.

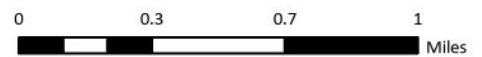
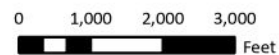


Emergency Response Points

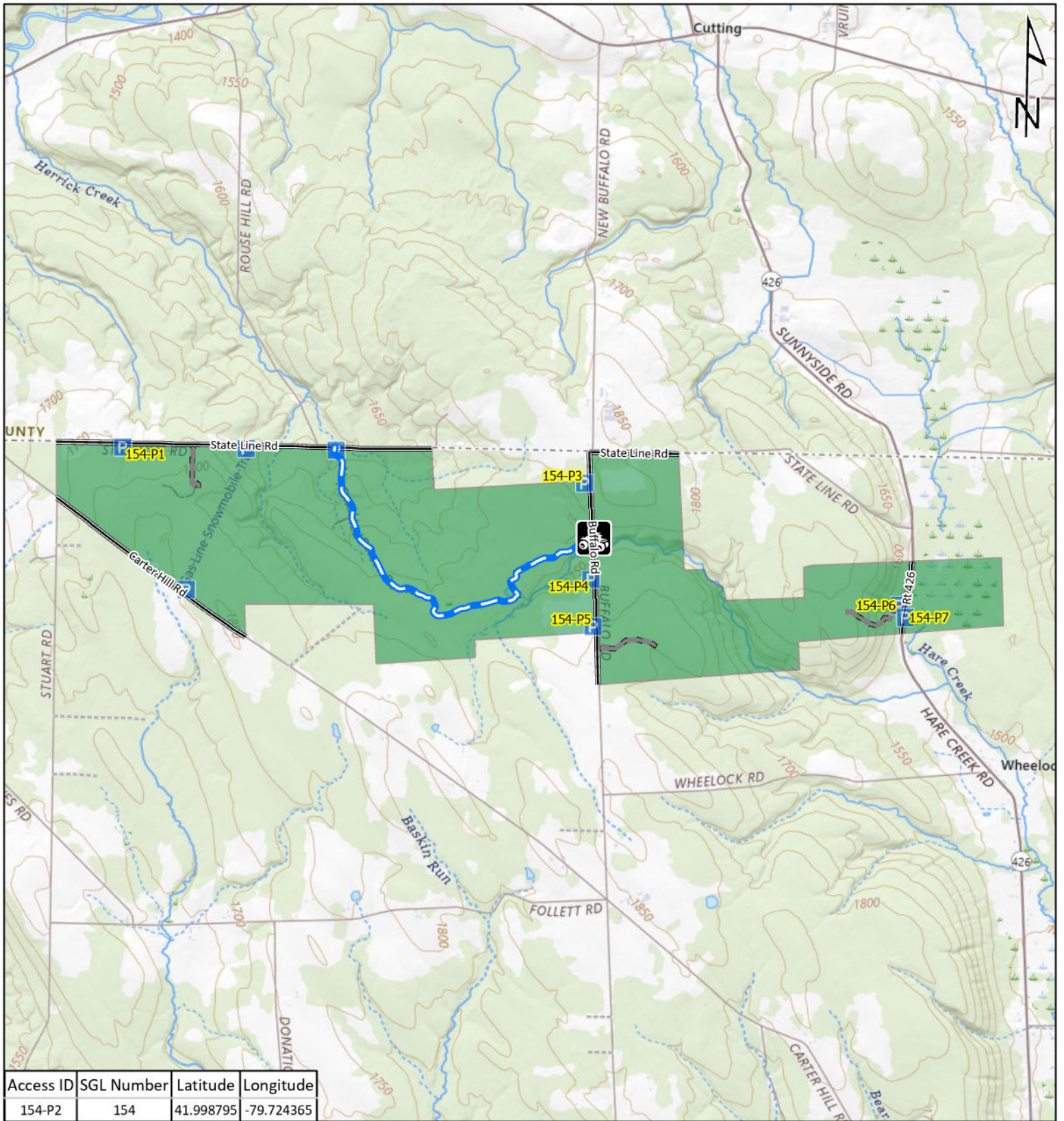
- ATV Access
- Vehicle Access
- ATV & Vehicle Access
- Roads Open to Vehicle Traffic
- Roads Seasonally Open to Vehicle Traffic
- Roads Closed to Vehicle Traffic



STATE GAME LAND 151

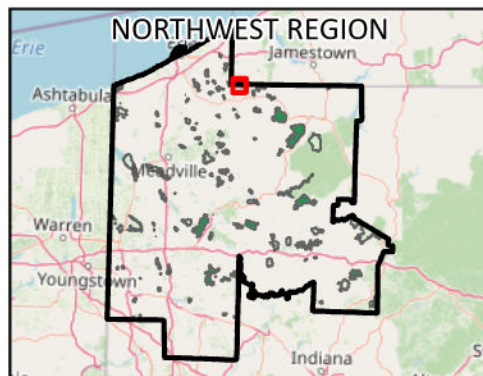


It is unlawful to ride ATV's on state game lands, except on designated roads open for persons issued a Disabled Person Permit, and who have a valid registration from the Department of Conservation & Natural Resources.

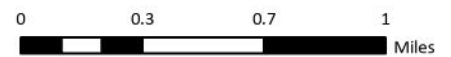
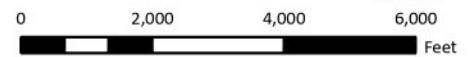


Emergency Response Points

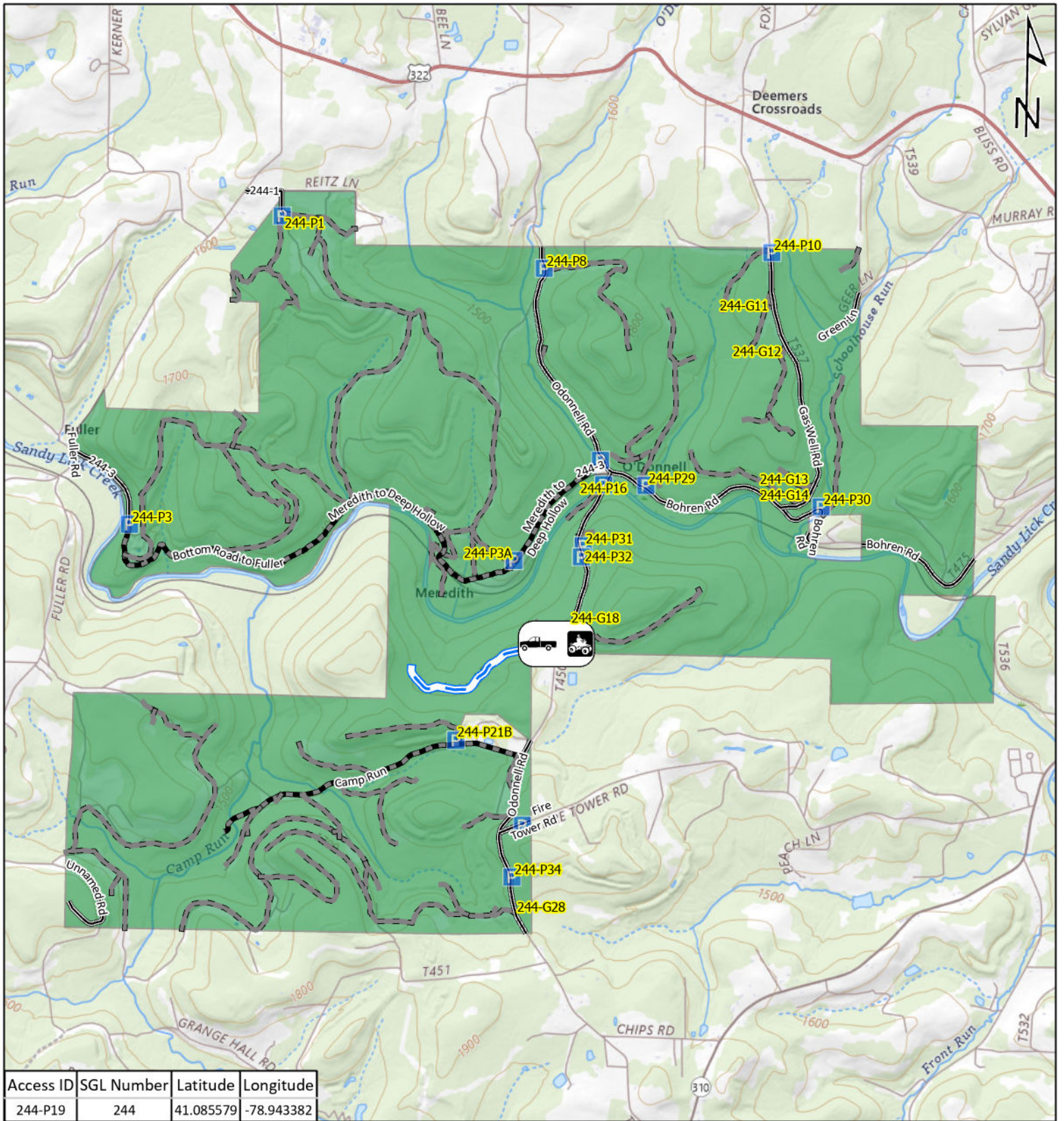
- ATV Access
- Vehicle Access
- ATV & Vehicle Access
- Roads Open to Vehicle Traffic
- Roads Seasonally Open to Vehicle Traffic
- Roads Closed to Vehicle Traffic



**STATE GAME
LAND 154**



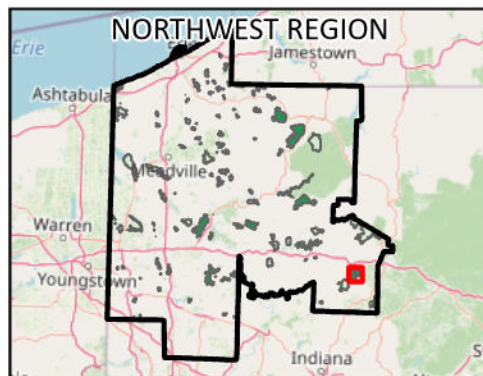
It is unlawful to ride ATV's on state game lands, except on designated roads open for persons issued a Disabled Person Permit, and who have a valid registration from the Department of Conservation & Natural Resources.



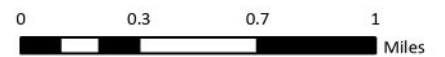
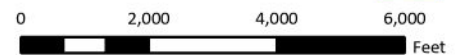
Access ID	SGL Number	Latitude	Longitude
244-P19	244	41.085579	-78.943382

Emergency Response Points

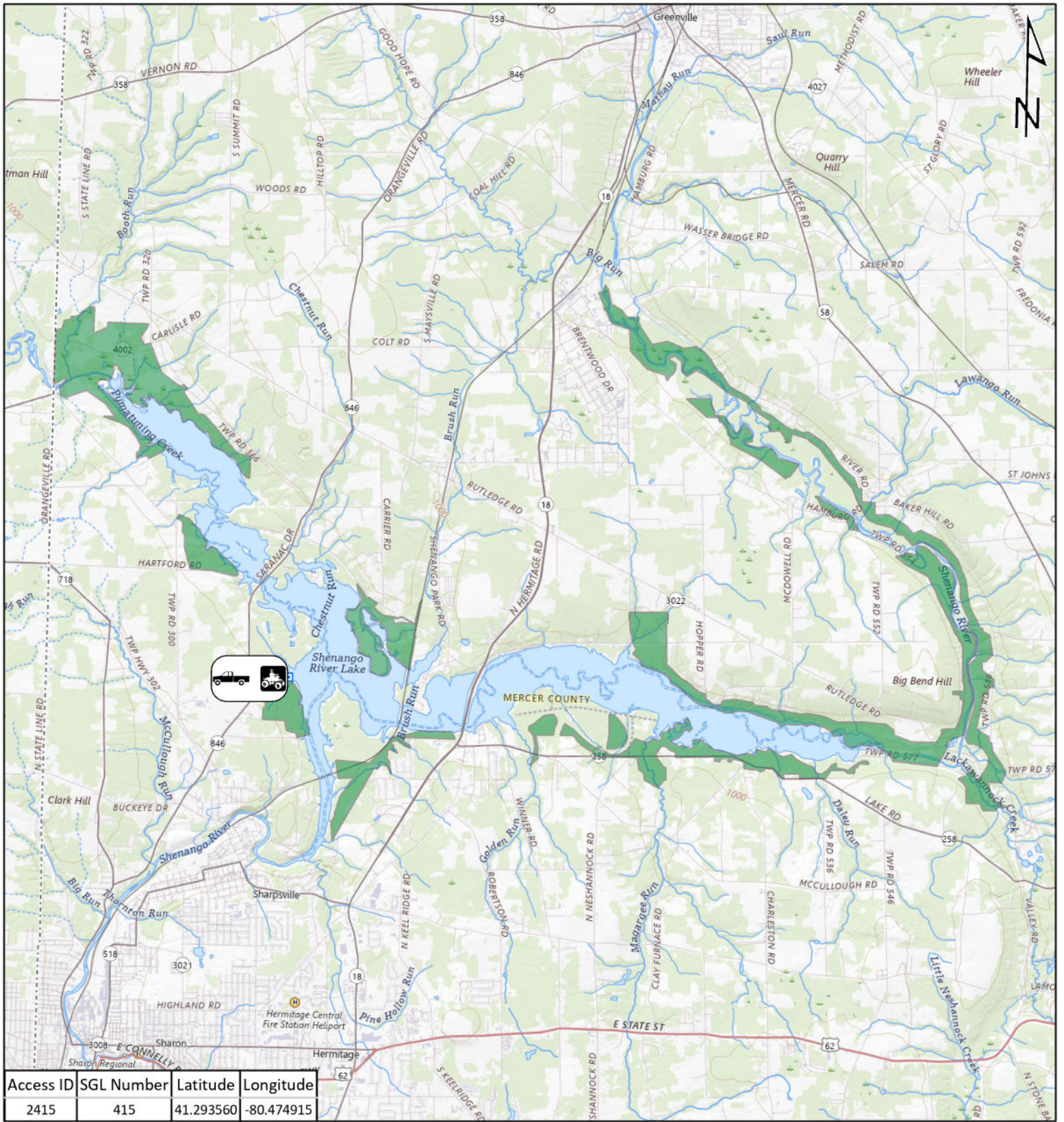
-   ATV Access
-   Vehicle Access
-   ATV & Vehicle Access
-  Roads Open to Vehicle Traffic
-  Roads Seasonally Open to Vehicle Traffic
-  Roads Closed to Vehicle Traffic



STATE GAME LAND 244

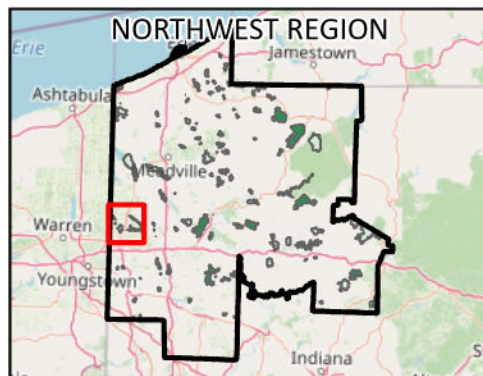


It is unlawful to ride ATV's on state game lands, except on designated roads open for persons issued a Disabled Person Permit, and who have a valid registration from the Department of Conservation & Natural Resources.



Emergency Response Points

-   ATV Access
-   Vehicle Access
-   ATV & Vehicle Access
-  Roads Open to Vehicle Traffic
-  Roads Seasonally Open to Vehicle Traffic
-  Roads Closed to Vehicle Traffic



**STATE GAME
LAND 2415**



0 5,000 10,000 15,000

Feet

0 1 2 3

Miles

It is unlawful to ride ATV's on state game lands, except on designated roads open for persons issued a Disabled Person Permit, and who have a valid registration from the Department of Conservation & Natural Resources.