



# PENNSYLVANIA GAME COMMISSION

## SOUTHCENTRAL REGION

8627 WILLIAM PENN HIGHWAY HUNTINGDON, PA 16652 | 1-833-742-4868 (PGC HUNT) 1-833-742-9453 (PGC WILD)

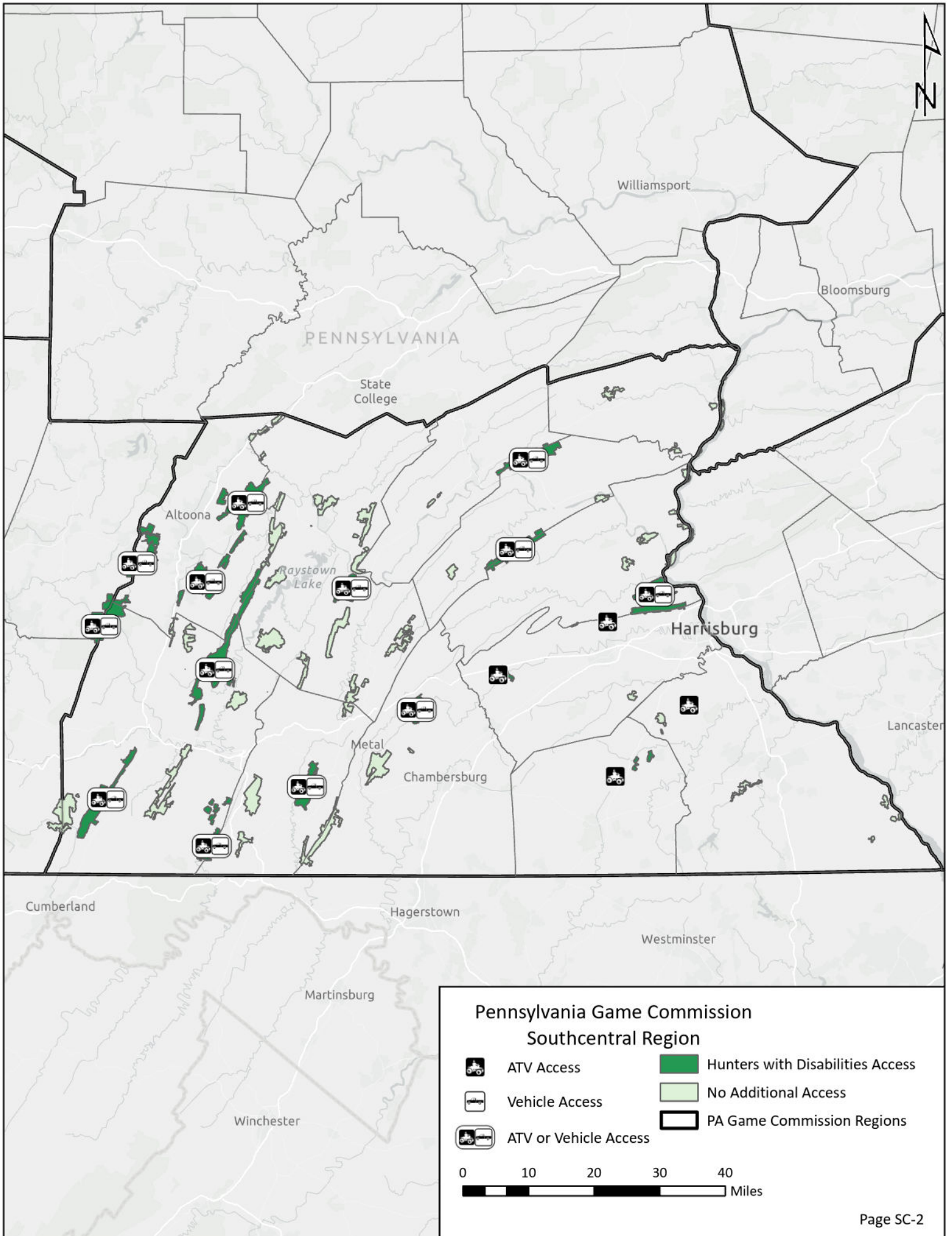
## Southcentral Region

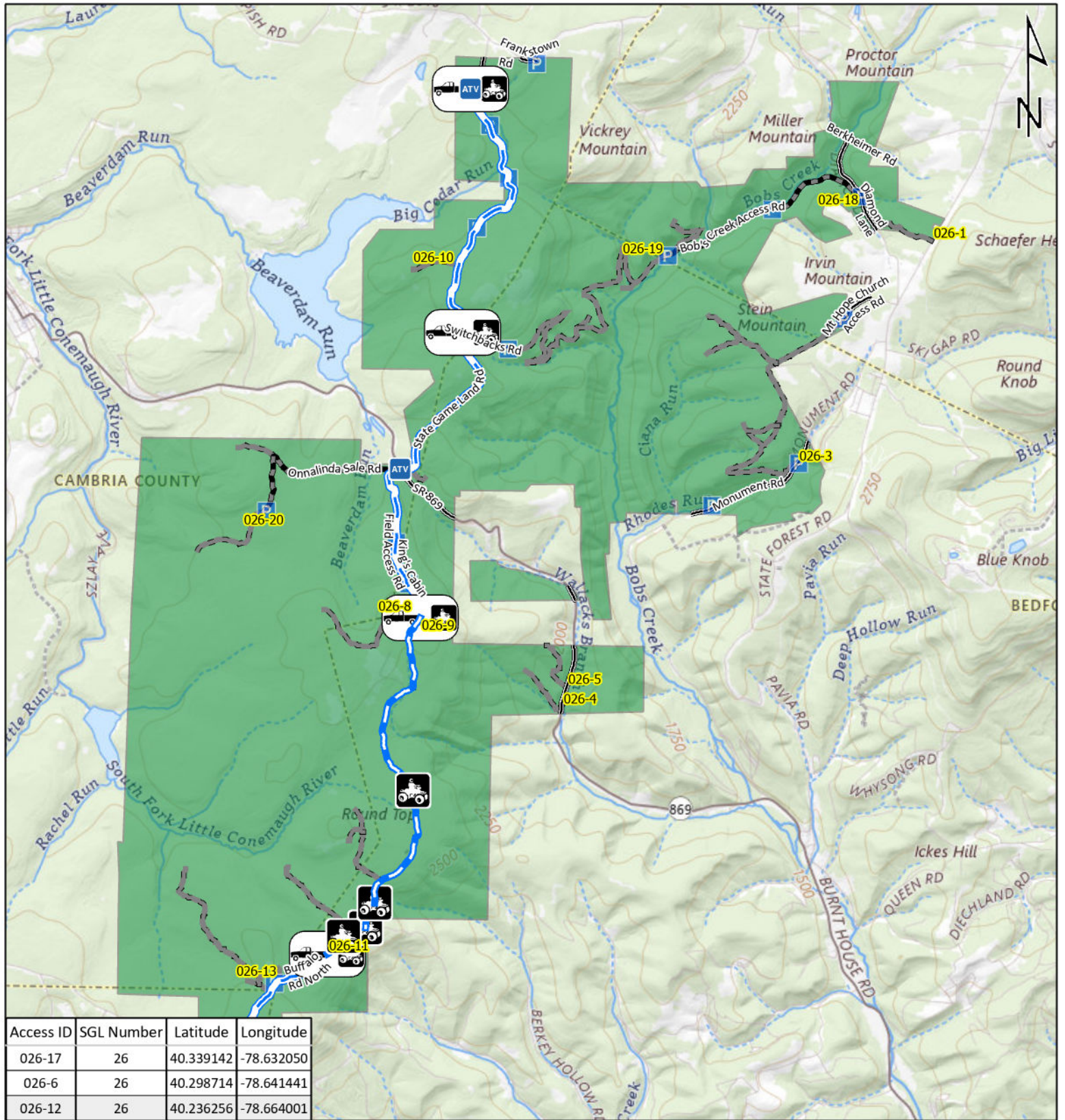


It is unlawful to ride ATVs on state game lands, except on designated roads open for persons issued a Disabled Persons Permit, and who have a valid registration from the Department of Conservation & Natural Resources.

# Table of Contents

<b>Southcentral Region Overview Map</b> .....	SC-2
<b>State Game Lands 26</b> Bedford, Blair, Cambria, and Somerset counties.....	SC-3
<b>State Game Lands 48</b> Bedford County .....	SC-4
<b>State Game Lands 49</b> Bedford and Fulton counties .....	SC-5
<b>State Game Lands 53</b> Fulton County.....	SC-6
<b>State Game Lands 71</b> Huntingdon County .....	SC-7
<b>State Game Lands 73</b> Bedford, Blair, and Huntingdon counties .....	SC-8
<b>State Game Lands 76</b> Franklin County .....	SC-9
<b>State Game Lands 88</b> Juniata and Perry counties .....	SC-10
<b>State Game Lands 107</b> Juniata and Mifflin counties .....	SC-11
<b>State Game Lands 147</b> Blair County.....	SC-12
<b>State Game Lands 166</b> Blair and Huntingdon county.....	SC-13
<b>State Game Lands 169</b> Cumberland County .....	SC-14
<b>State Game Lands 170</b> Cumberland and Perry counties .....	SC-15
<b>State Game Lands 198</b> Blair and Cambria County.....	SC-16
<b>State Game Lands 230</b> Cumberland and Perry counties .....	SC-17
<b>State Game Lands 242</b> York County.....	SC-18
<b>State Game Lands 249</b> Adams County .....	SC-19



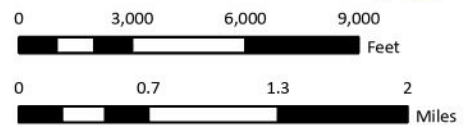


**Emergency Response Points**

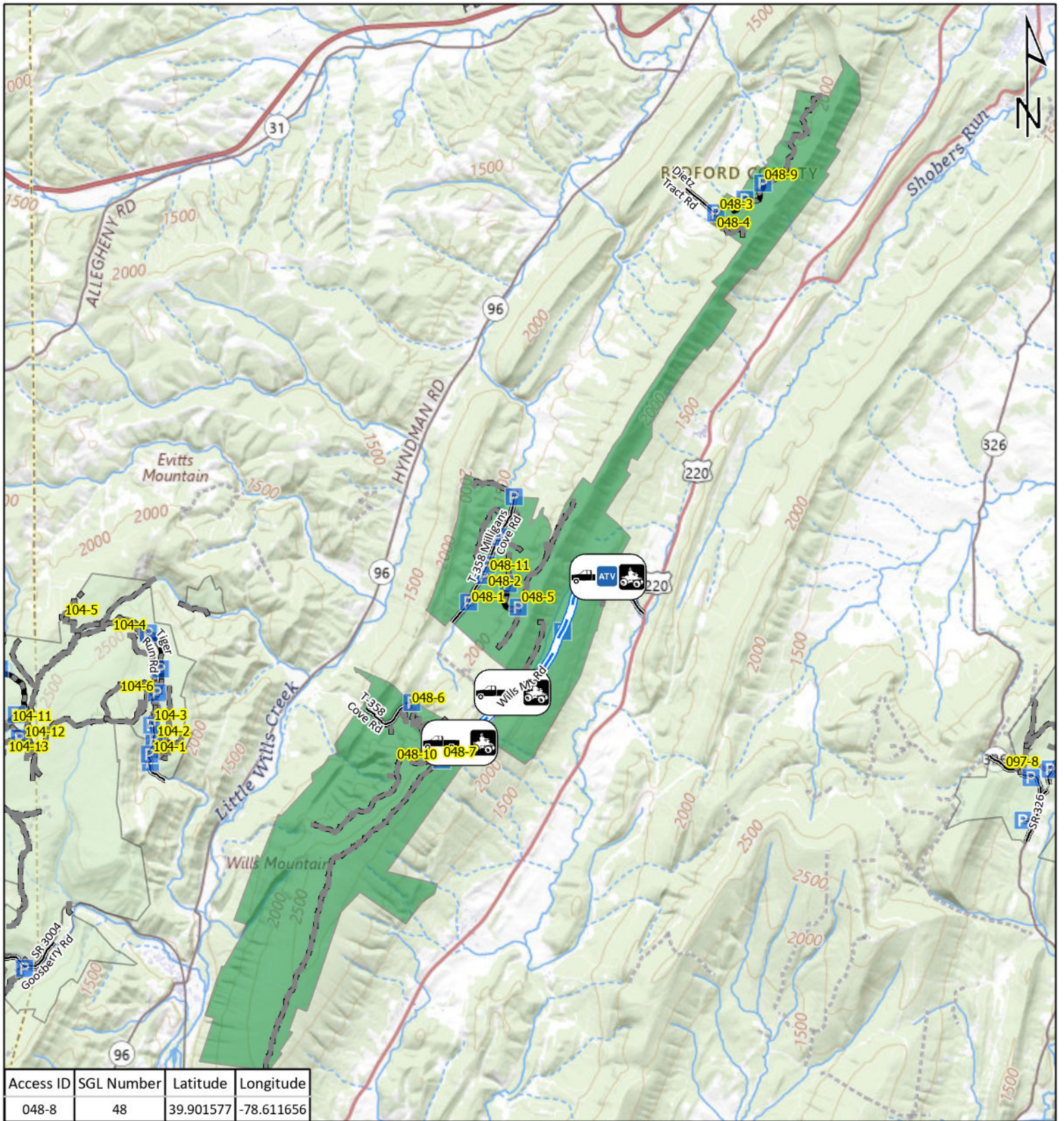
- ATV Access
- Vehicle Access
- ATV & Vehicle Access
- Roads Open to Vehicle Traffic
- Roads Seasonally Open to Vehicle Traffic
- Roads Closed to Vehicle Traffic



**STATE GAME LAND 26**



It is unlawful to ride ATV's on state game lands, except on designated roads open for persons issued a Disabled Person Permit, and who have a valid registration from the Department of Conservation & Natural Resources.

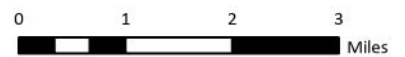
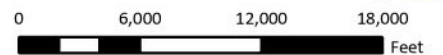


**Emergency Response Points**

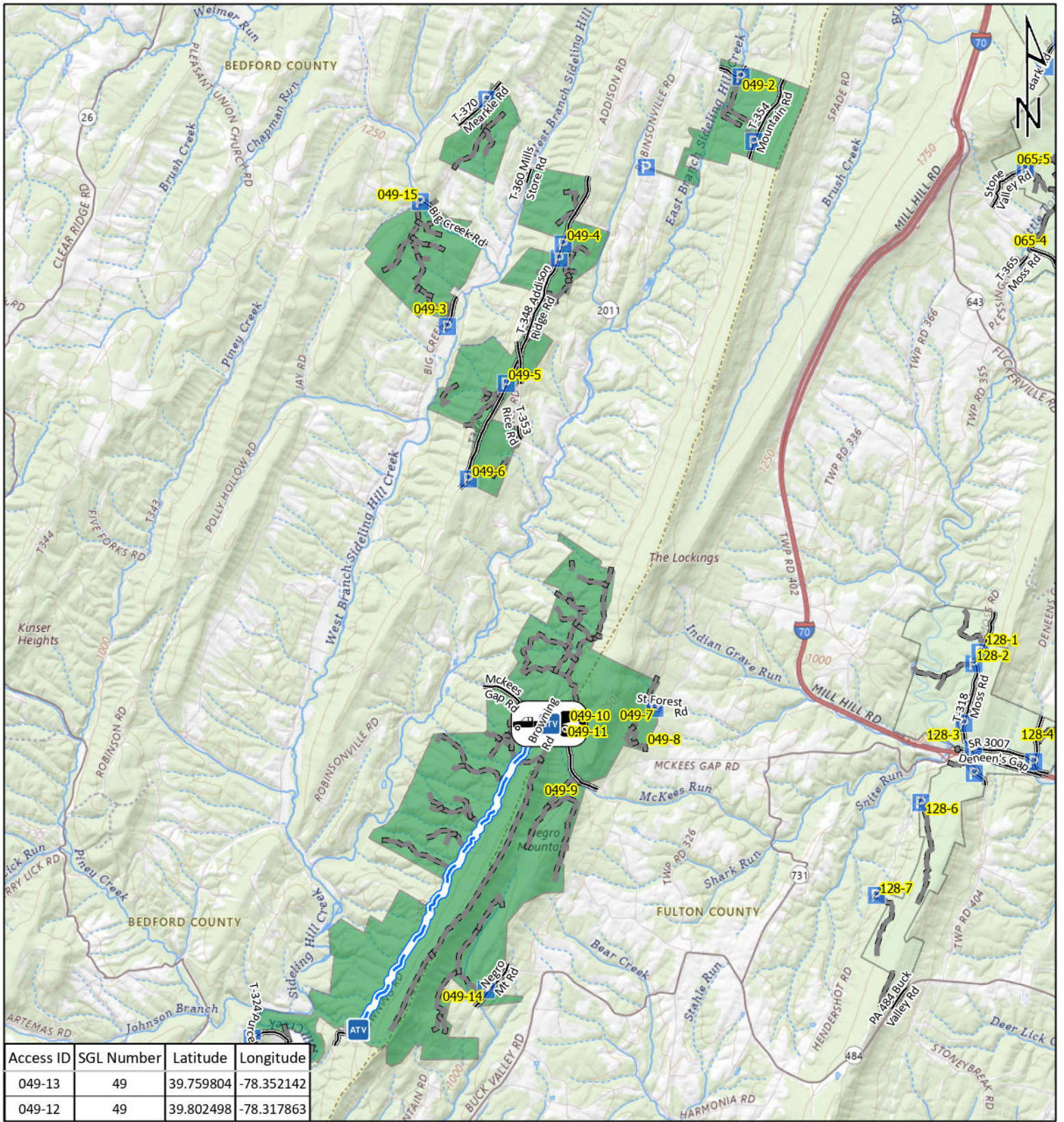
- ATV Access
- Vehicle Access
- ATV & Vehicle Access
- Roads Open to Vehicle Traffic
- Roads Seasonally Open to Vehicle Traffic
- Roads Closed to Vehicle Traffic



**STATE GAME LAND 48**



It is unlawful to ride ATV's on state game lands, except on designated roads open for persons issued a Disabled Person Permit, and who have a valid registration from the Department of Conservation & Natural Resources.



Access ID	SGL Number	Latitude	Longitude
049-13	49	39.759804	-78.352142
049-12	49	39.802498	-78.317863

**Emergency Response Points**

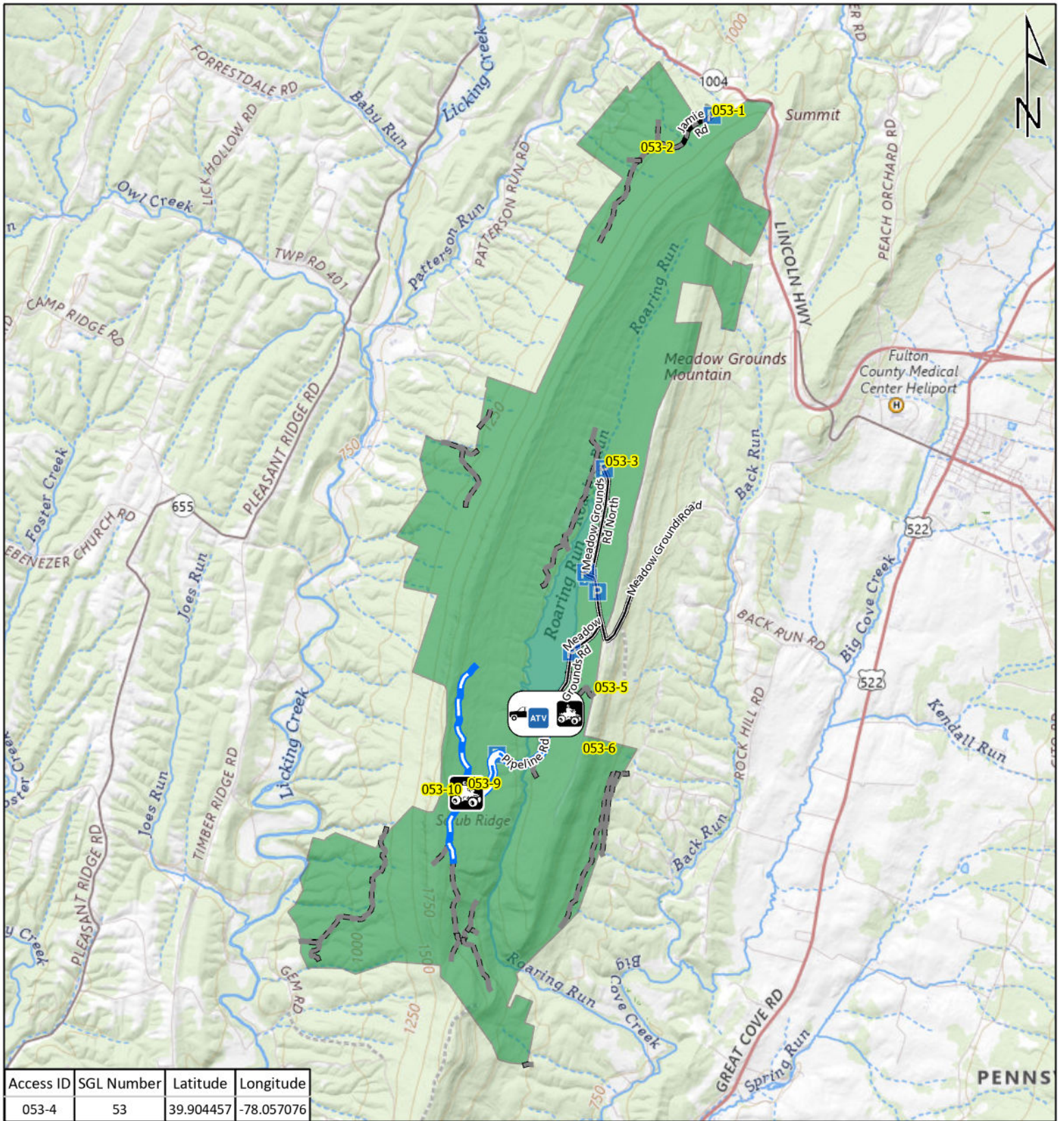
- ATV Access
- Vehicle Access
- ATV & Vehicle Access
- Roads Open to Vehicle Traffic
- Roads Seasonally Open to Vehicle Traffic
- Roads Closed to Vehicle Traffic



**STATE GAME LAND 49**



It is unlawful to ride ATV's on state game lands, except on designated roads open for persons issued a Disabled Person Permit, and who have a valid registration from the Department of Conservation & Natural Resources.

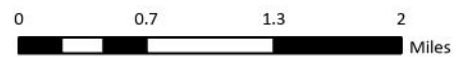
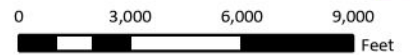


**Emergency Response Points**

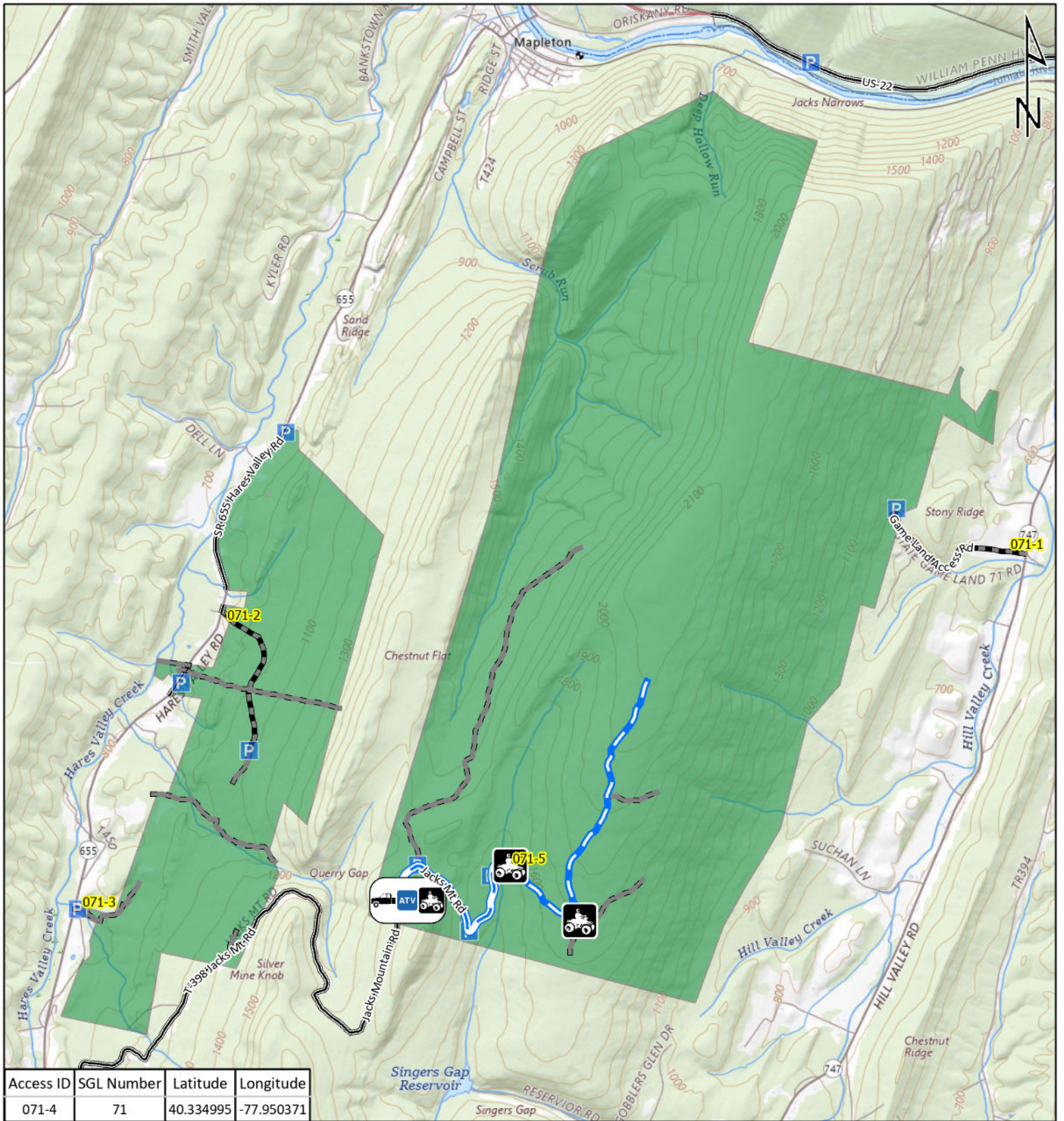
- ATV Access
- Vehicle Access
- ATV & Vehicle Access
- Roads Open to Vehicle Traffic
- Roads Seasonally Open to Vehicle Traffic
- Roads Closed to Vehicle Traffic



**STATE GAME  
LAND 53**



It is unlawful to ride ATV's on state game lands, except on designated roads open for persons issued a Disabled Person Permit, and who have a valid registration from the Department of Conservation & Natural Resources.

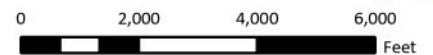


**Emergency Response Points**

- ATV Access
- Vehicle Access
- ATV & Vehicle Access
- Roads Open to Vehicle Traffic
- Roads Seasonally Open to Vehicle Traffic
- Roads Closed to Vehicle Traffic

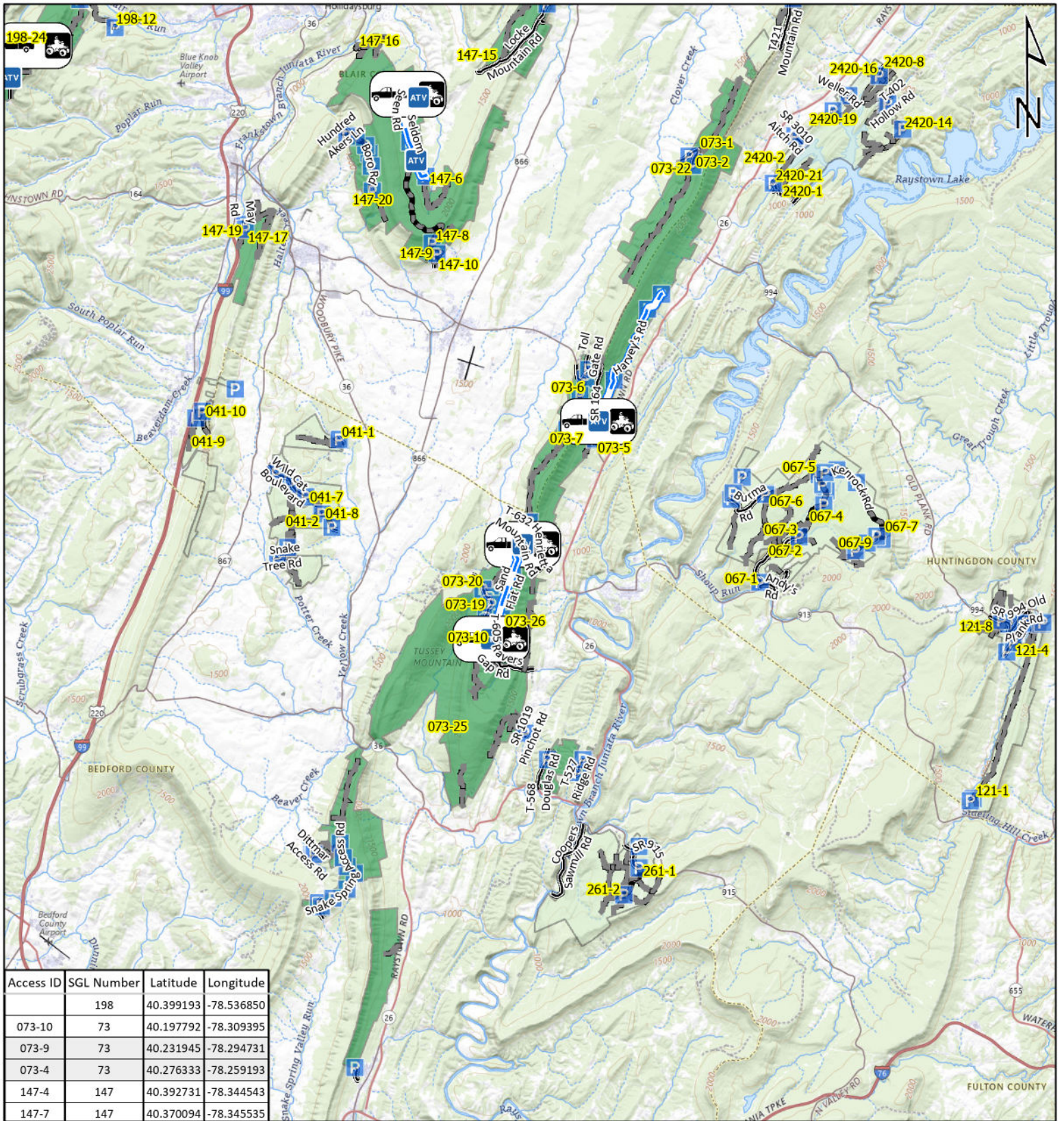


**STATE GAME  
LAND 71**



It is unlawful to ride ATV's on state game lands, except on designated roads open for persons issued a Disabled Person Permit, and who have a valid registration from the Department of Conservation & Natural Resources.





Access ID	SGL Number	Latitude	Longitude
198-24	198	40.399193	-78.536850
073-10	73	40.197792	-78.309395
073-9	73	40.231945	-78.294731
073-4	73	40.276333	-78.259193
147-4	147	40.392731	-78.344543
147-7	147	40.370094	-78.345535

**Emergency Response Points**

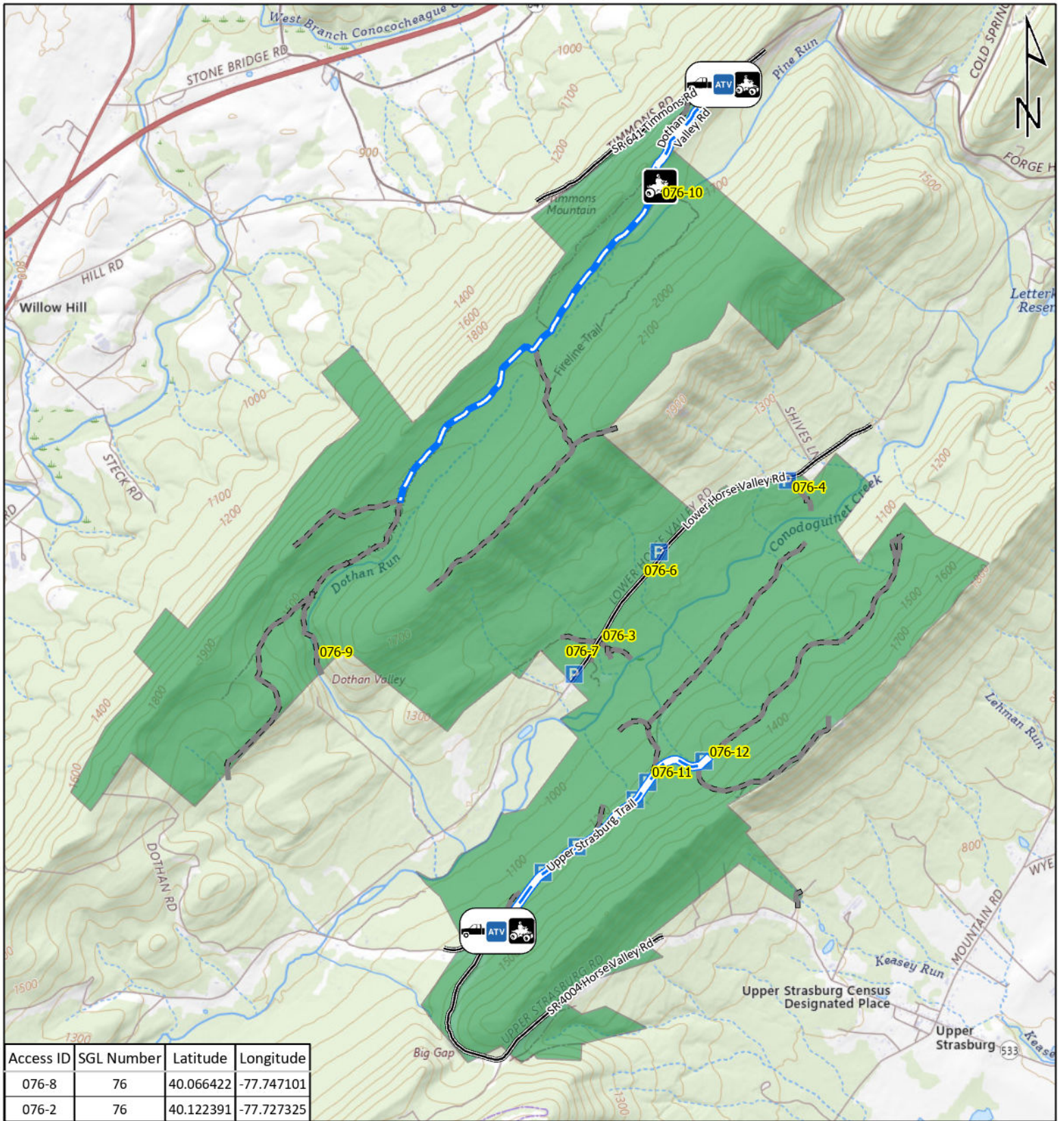
- ATV Access
- Vehicle Access
- ATV & Vehicle Access
- Roads Open to Vehicle Traffic
- Roads Seasonally Open to Vehicle Traffic
- Roads Closed to Vehicle Traffic



**STATE GAME LAND 73**



It is unlawful to ride ATV's on state game lands, except on designated roads open for persons issued a Disabled Person Permit, and who have a valid registration from the Department of Conservation & Natural Resources.

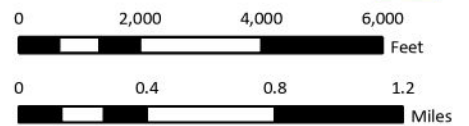


**Emergency Response Points**

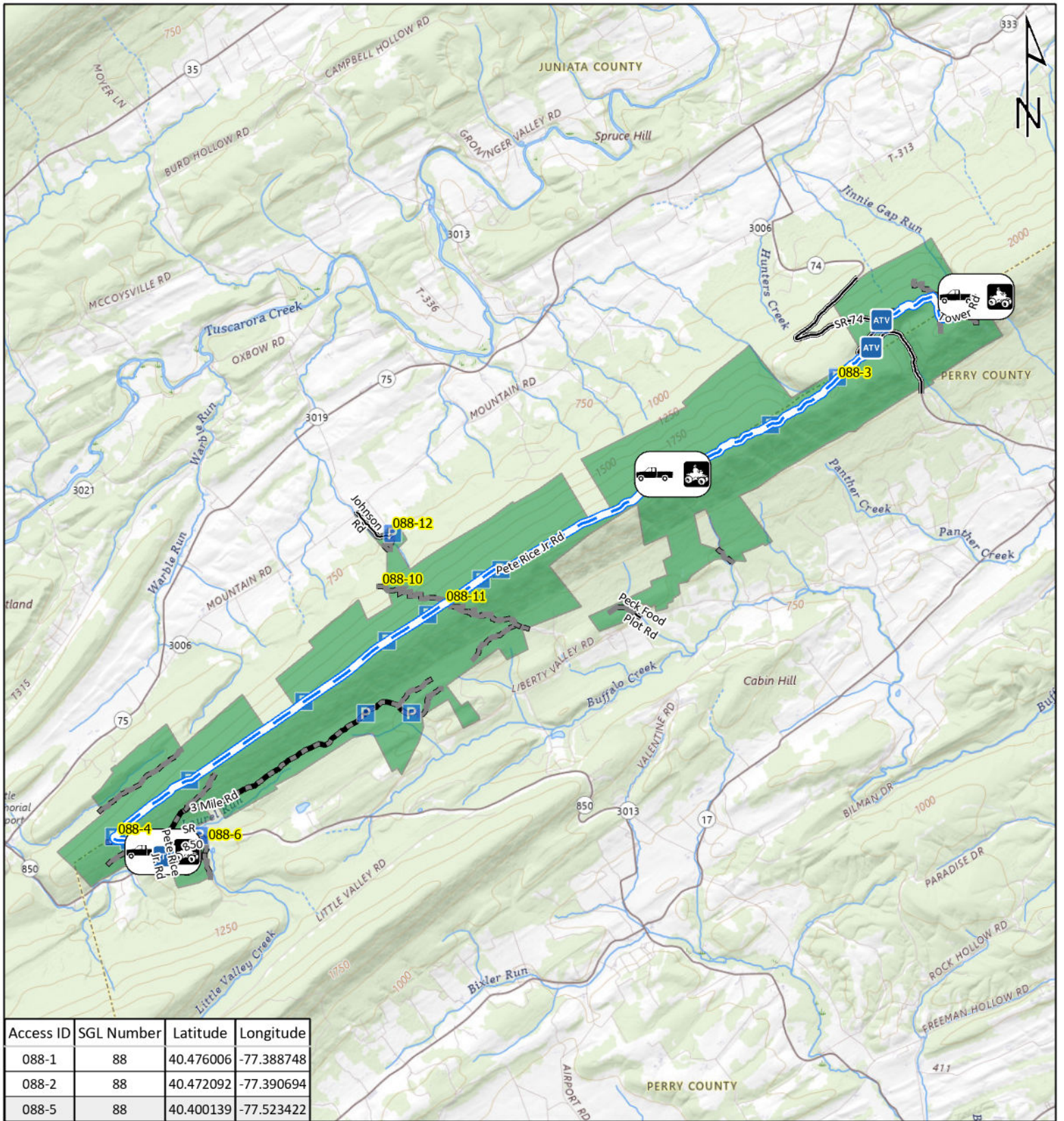
- ATV Access
- Vehicle Access
- ATV & Vehicle Access
- Roads Open to Vehicle Traffic
- Roads Seasonally Open to Vehicle Traffic
- Roads Closed to Vehicle Traffic



**STATE GAME  
LAND 76**



It is unlawful to ride ATV's on state game lands, except on designated roads open for persons issued a Disabled Person Permit, and who have a valid registration from the Department of Conservation & Natural Resources.



**Emergency Response Points**

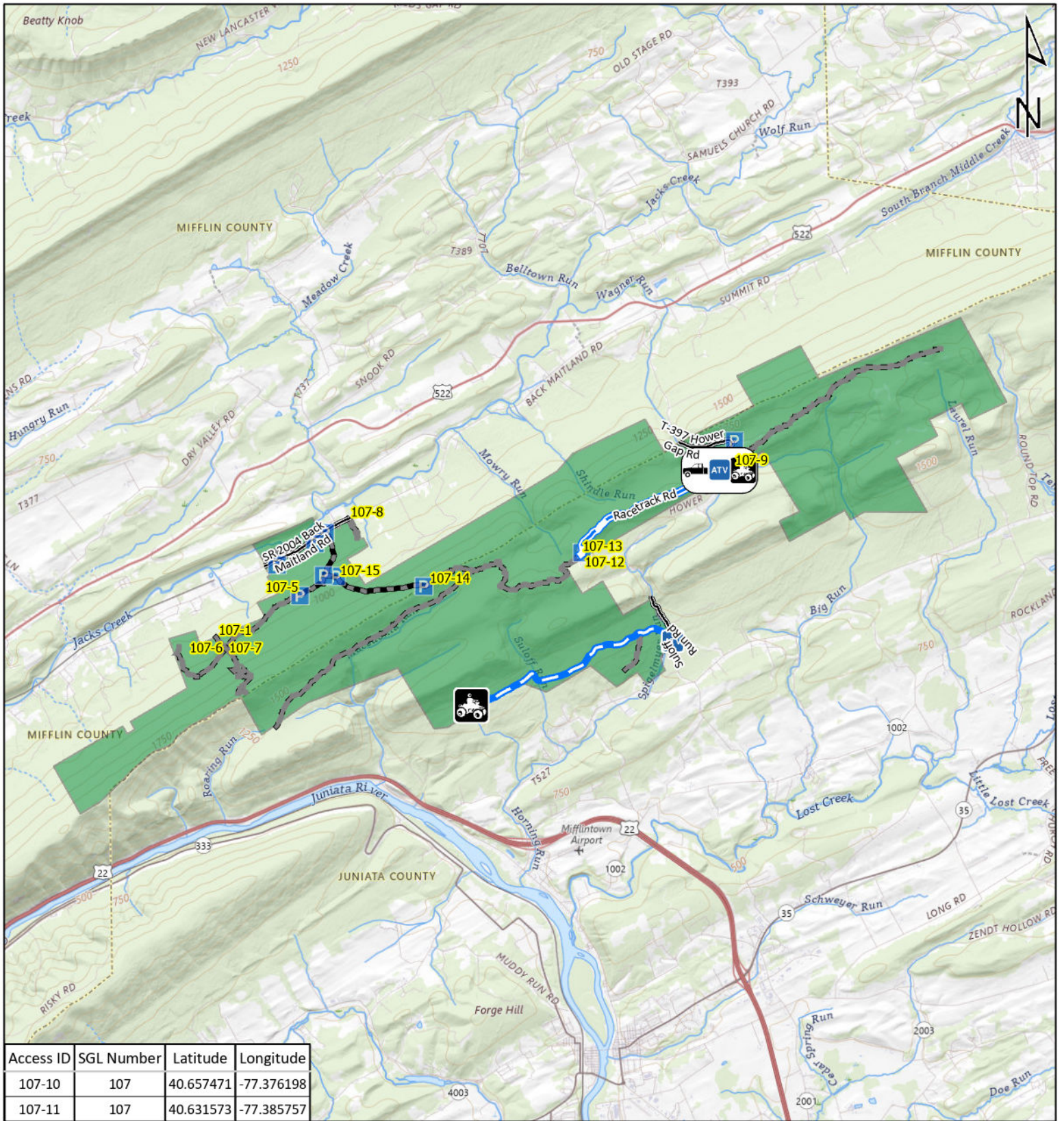
- ATV Access
- Vehicle Access
- ATV & Vehicle Access
- Roads Open to Vehicle Traffic
- Roads Seasonally Open to Vehicle Traffic
- Roads Closed to Vehicle Traffic



**STATE GAME LAND 88**



It is unlawful to ride ATV's on state game lands, except on designated roads open for persons issued a Disabled Person Permit, and who have a valid registration from the Department of Conservation & Natural Resources.

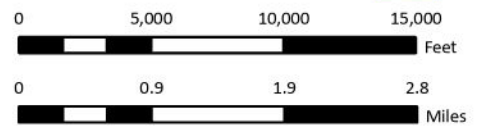


**Emergency Response Points**

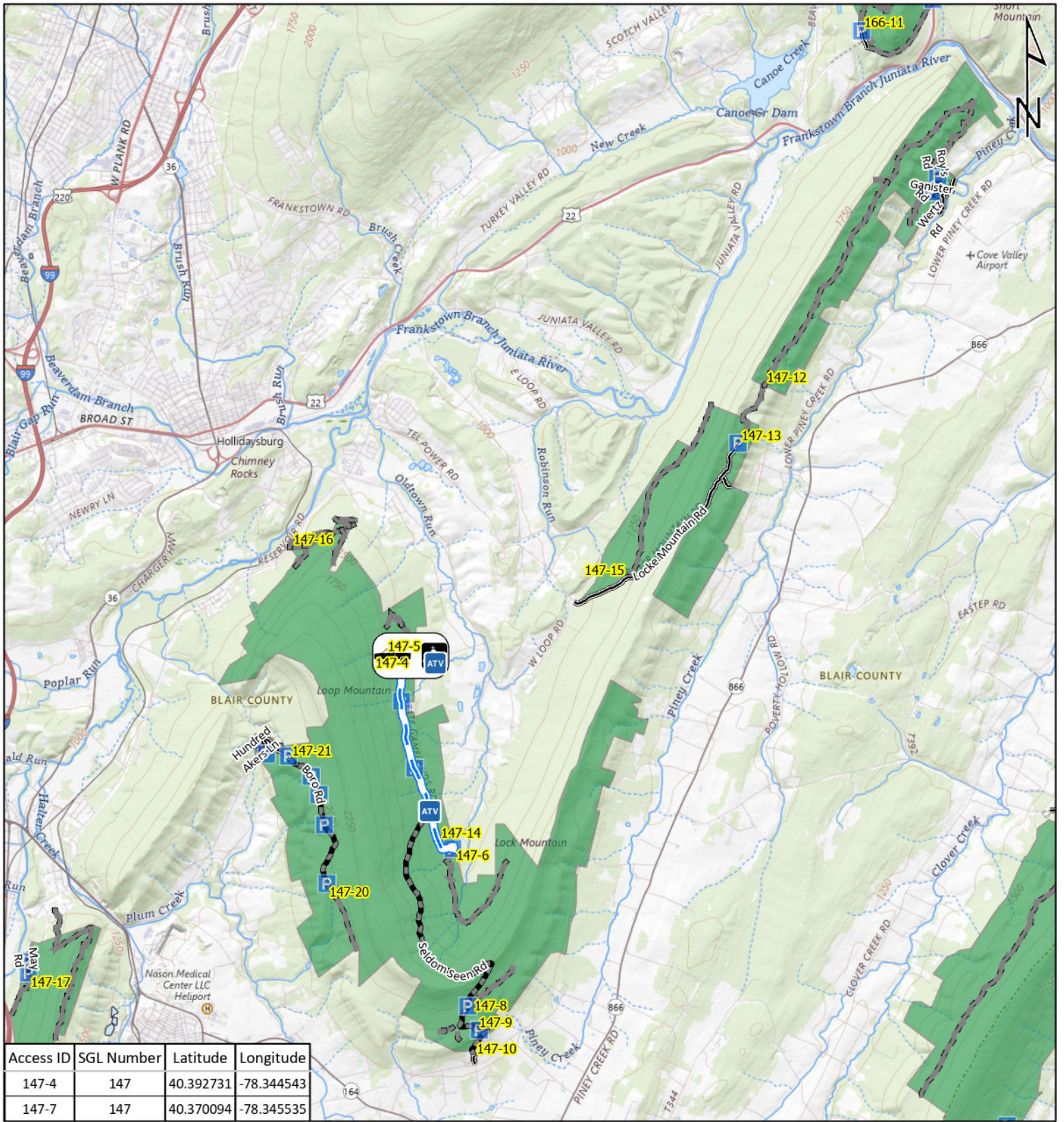
-   ATV Access
-   Vehicle Access
-   ATV & Vehicle Access
-  Roads Open to Vehicle Traffic
-  Roads Seasonally Open to Vehicle Traffic
-  Roads Closed to Vehicle Traffic



**STATE GAME  
LAND 107**



It is unlawful to ride ATV's on state game lands, except on designated roads open for persons issued a Disabled Person Permit, and who have a valid registration from the Department of Conservation & Natural Resources.



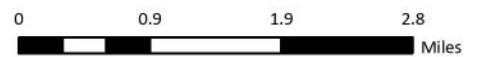
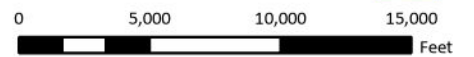
Access ID	SGL Number	Latitude	Longitude
147-4	147	40.392731	-78.344543
147-7	147	40.370094	-78.345535

**Emergency Response Points**

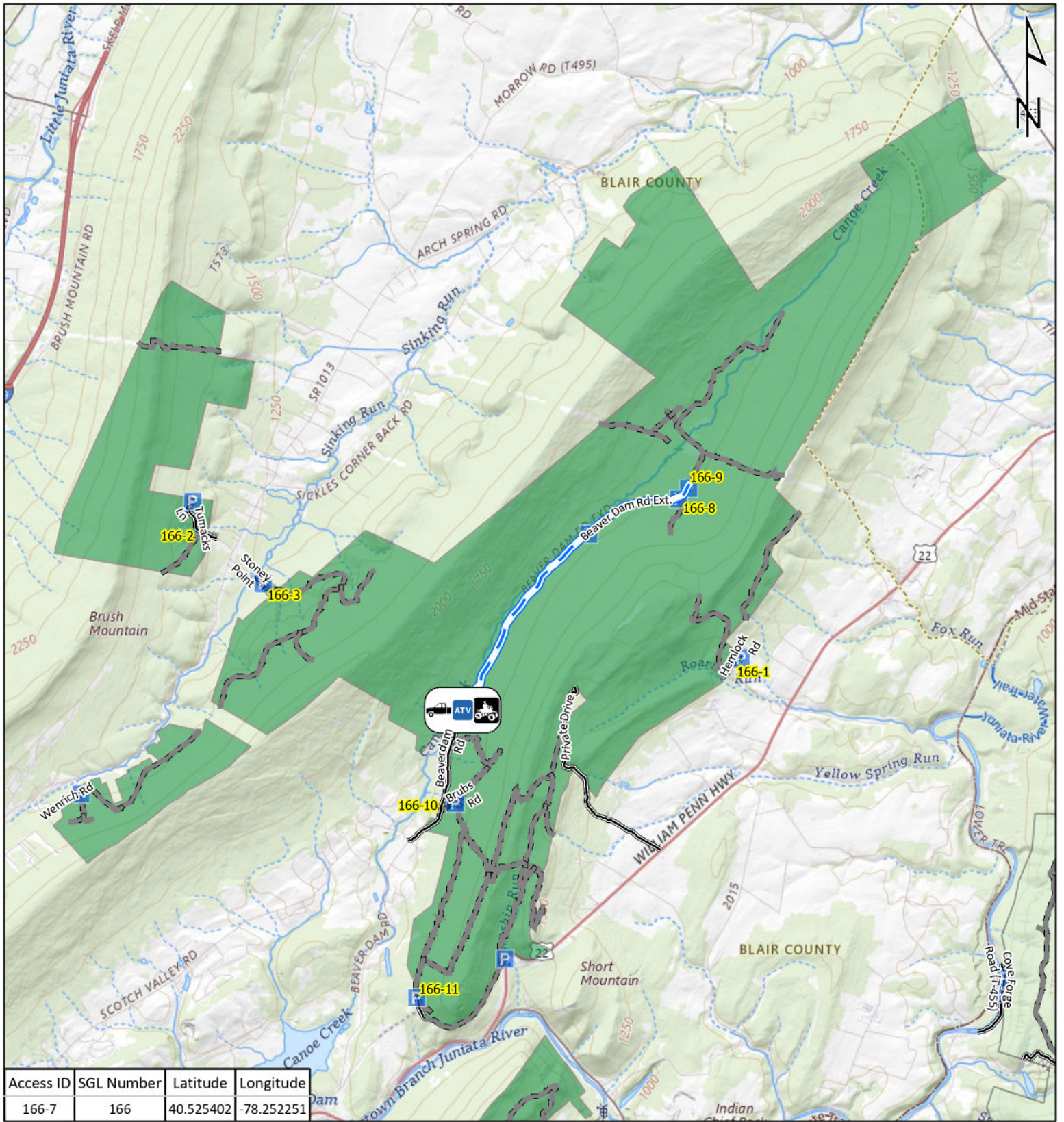
-  ATV Access
-  Vehicle Access
-  ATV & Vehicle Access
-  Roads Open to Vehicle Traffic
-  Roads Seasonally Open to Vehicle Traffic
-  Roads Closed to Vehicle Traffic



**STATE GAME  
LAND 147**



It is unlawful to ride ATV's on state game lands, except on designated roads open for persons issued a Disabled Person Permit, and who have a valid registration from the Department of Conservation & Natural Resources.



**Emergency Response Points**

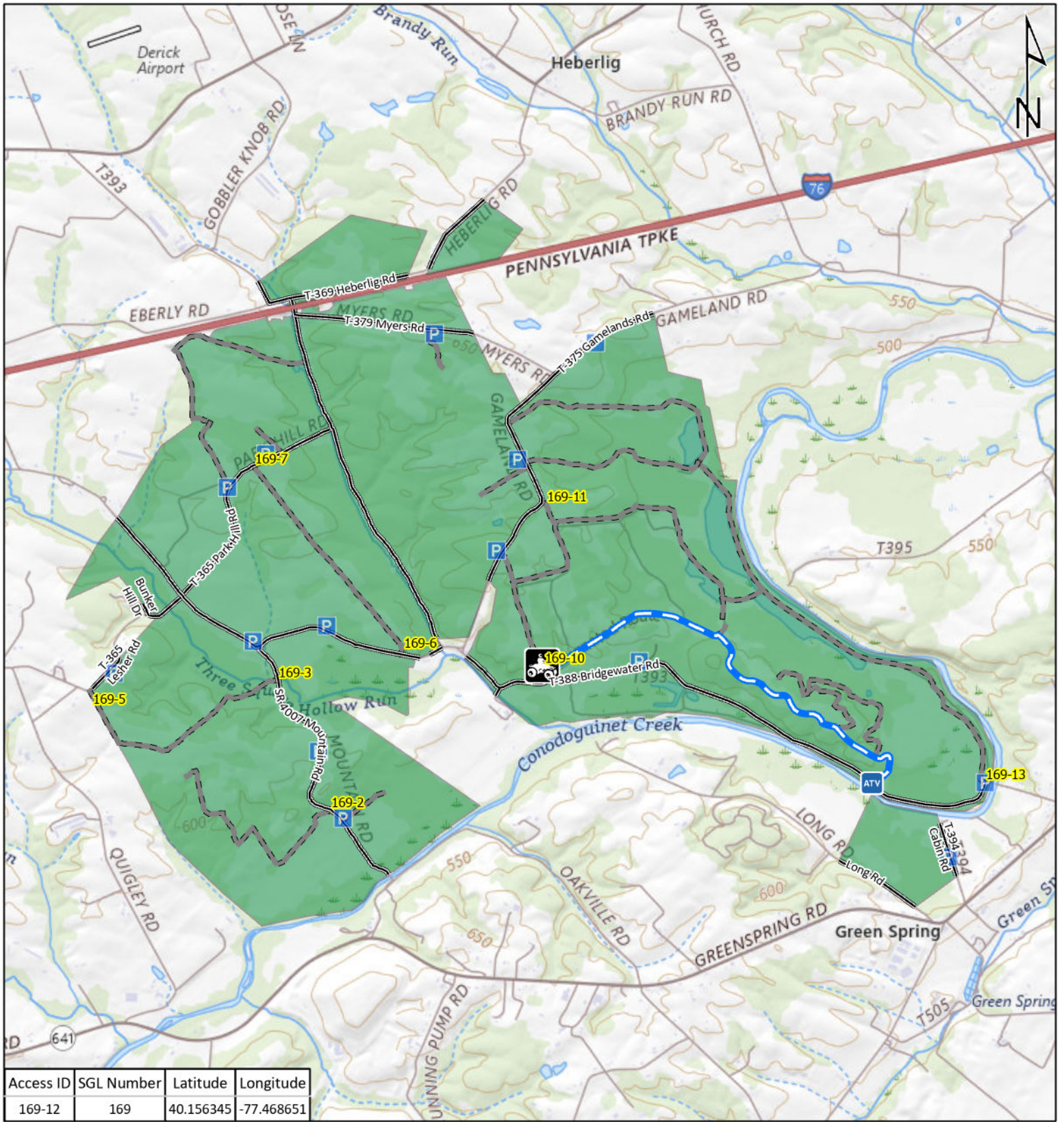
- ATV Access
- Vehicle Access
- ATV & Vehicle Access
- Roads Open to Vehicle Traffic
- Roads Seasonally Open to Vehicle Traffic
- Roads Closed to Vehicle Traffic



**STATE GAME  
LAND 166**



It is unlawful to ride ATV's on state game lands, except on designated roads open for persons issued a Disabled Person Permit, and who have a valid registration from the Department of Conservation & Natural Resources.

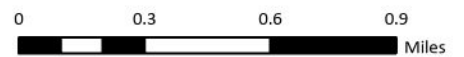


Access ID	SGL Number	Latitude	Longitude
169-12	169	40.156345	-77.468651

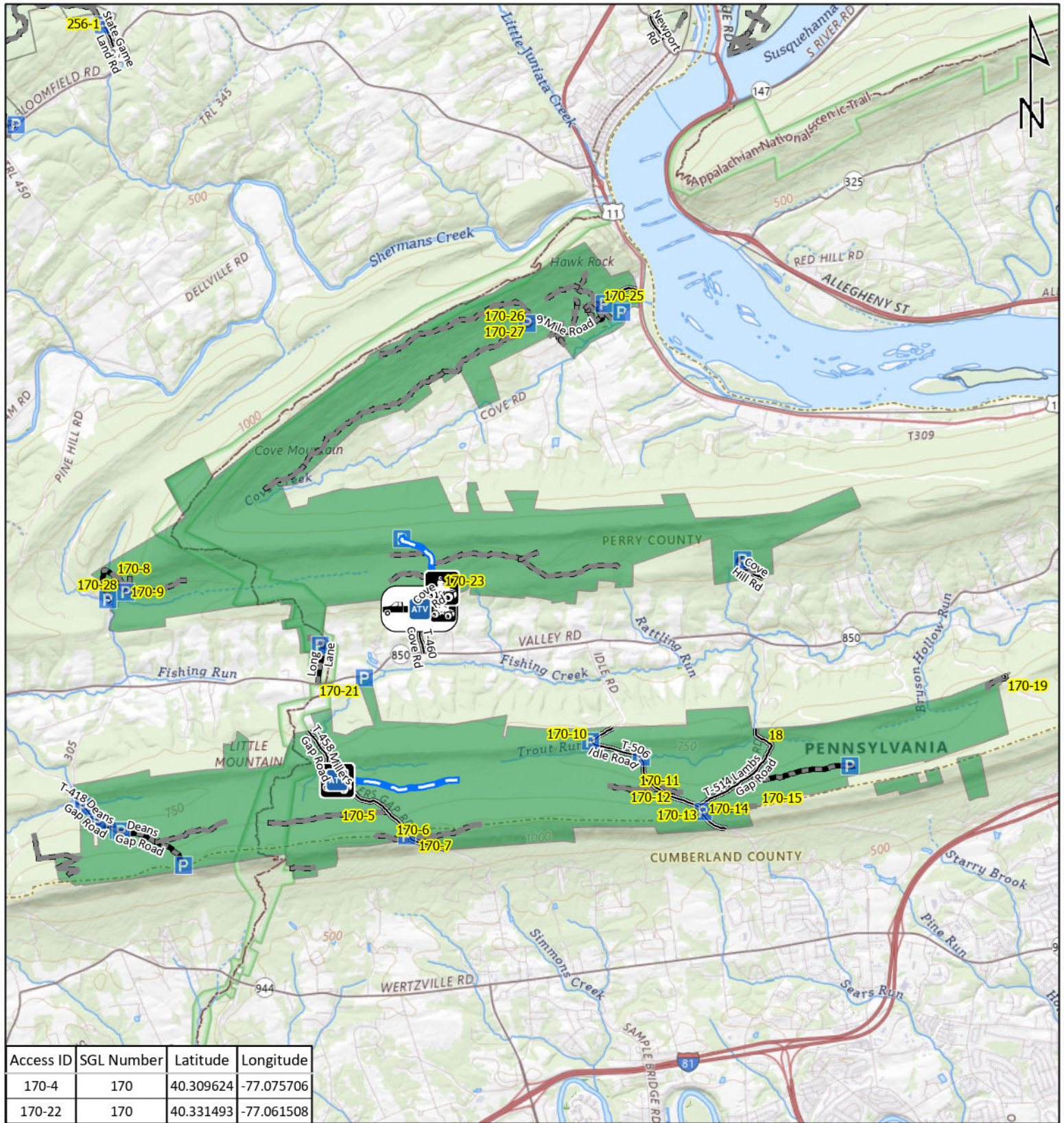
- Emergency Response Points**
- ATV Access
  - Vehicle Access
  - ATV & Vehicle Access
  - Roads Open to Vehicle Traffic
  - Roads Seasonally Open to Vehicle Traffic
  - Roads Closed to Vehicle Traffic



## STATE GAME LAND 169



It is unlawful to ride ATV's on state game lands, except on designated roads open for persons issued a Disabled Person Permit, and who have a valid registration from the Department of Conservation & Natural Resources.

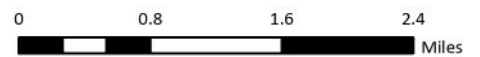
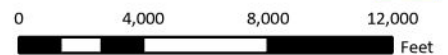


**Emergency Response Points**

- ATV Access
- Vehicle Access
- ATV & Vehicle Access
- Roads Open to Vehicle Traffic
- Roads Seasonally Open to Vehicle Traffic
- Roads Closed to Vehicle Traffic

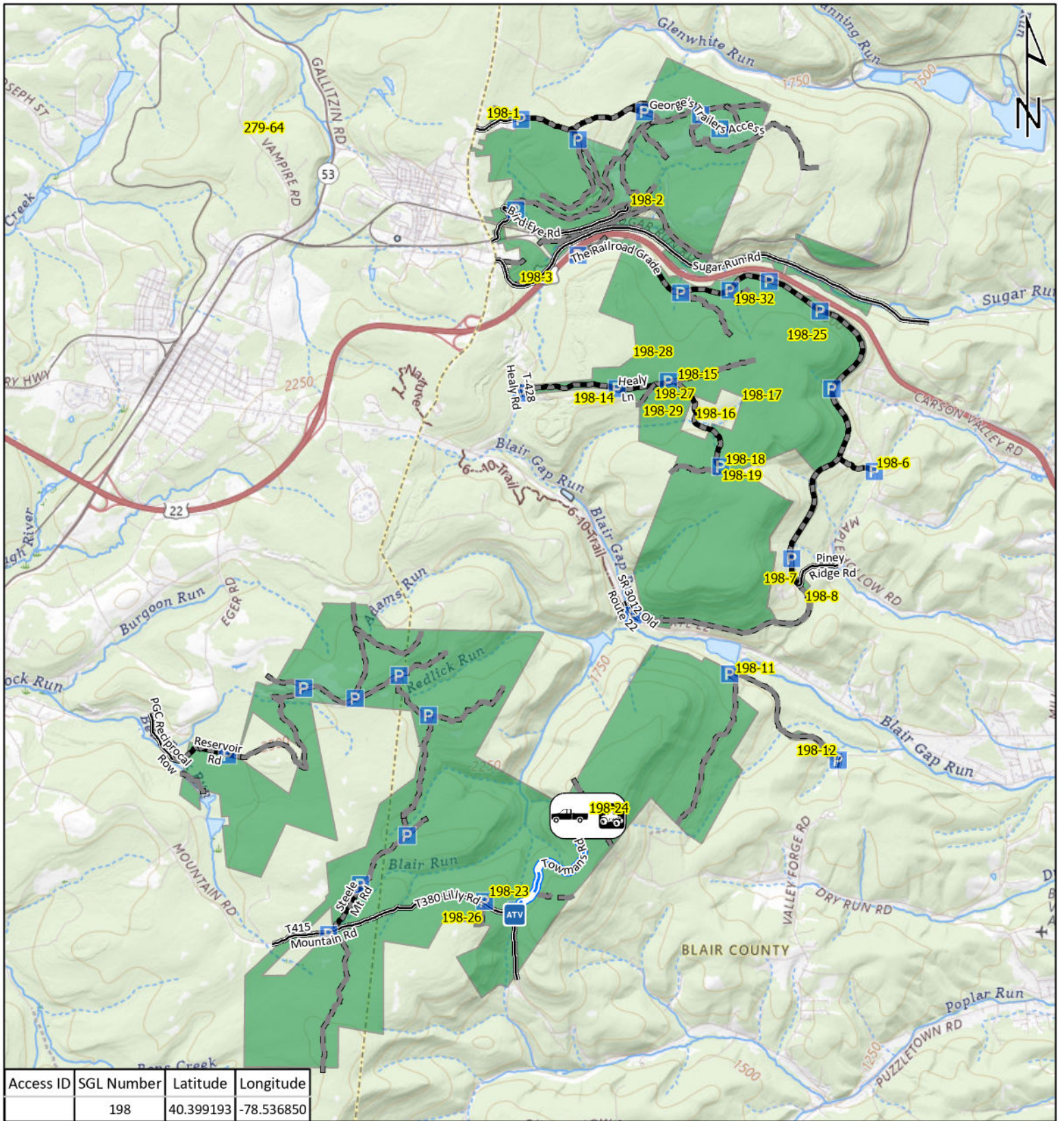


**STATE GAME  
LAND 170**



It is unlawful to ride ATV's on state game lands, except on designated roads open for persons issued a Disabled Person Permit, and who have a valid registration from the Department of Conservation & Natural Resources.





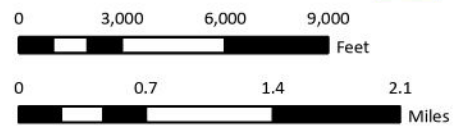
Access ID	SGL Number	Latitude	Longitude
	198	40.399193	-78.536850

**Emergency Response Points**

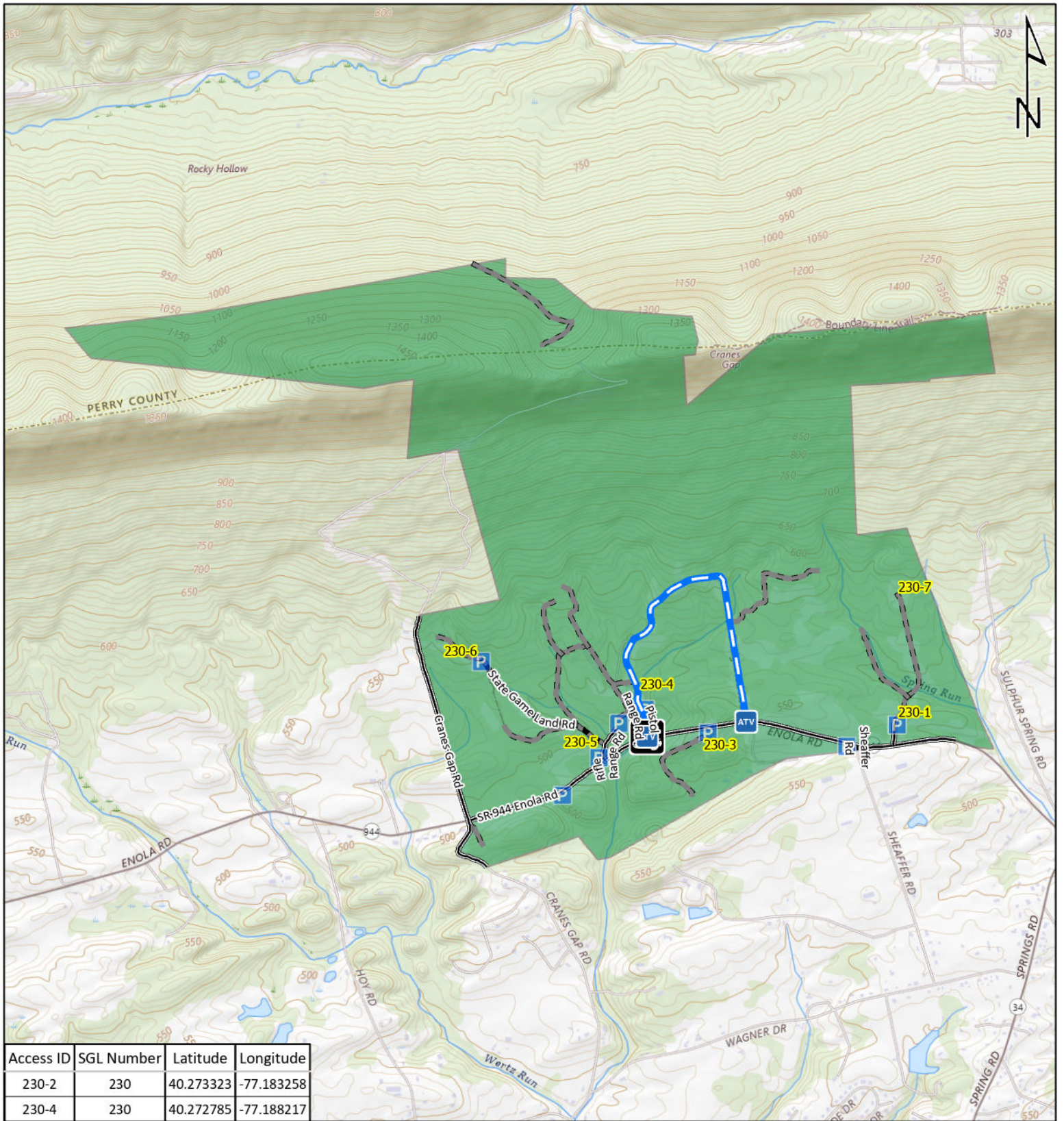
-  ATV Access
-  Vehicle Access
-  ATV & Vehicle Access
-  Roads Open to Vehicle Traffic
-  Roads Seasonally Open to Vehicle Traffic
-  Roads Closed to Vehicle Traffic



**STATE GAME  
LAND 198**



It is unlawful to ride ATV's on state game lands, except on designated roads open for persons issued a Disabled Person Permit, and who have a valid registration from the Department of Conservation & Natural Resources.

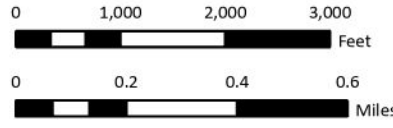


Access ID	SGL Number	Latitude	Longitude
230-2	230	40.273323	-77.183258
230-4	230	40.272785	-77.188217

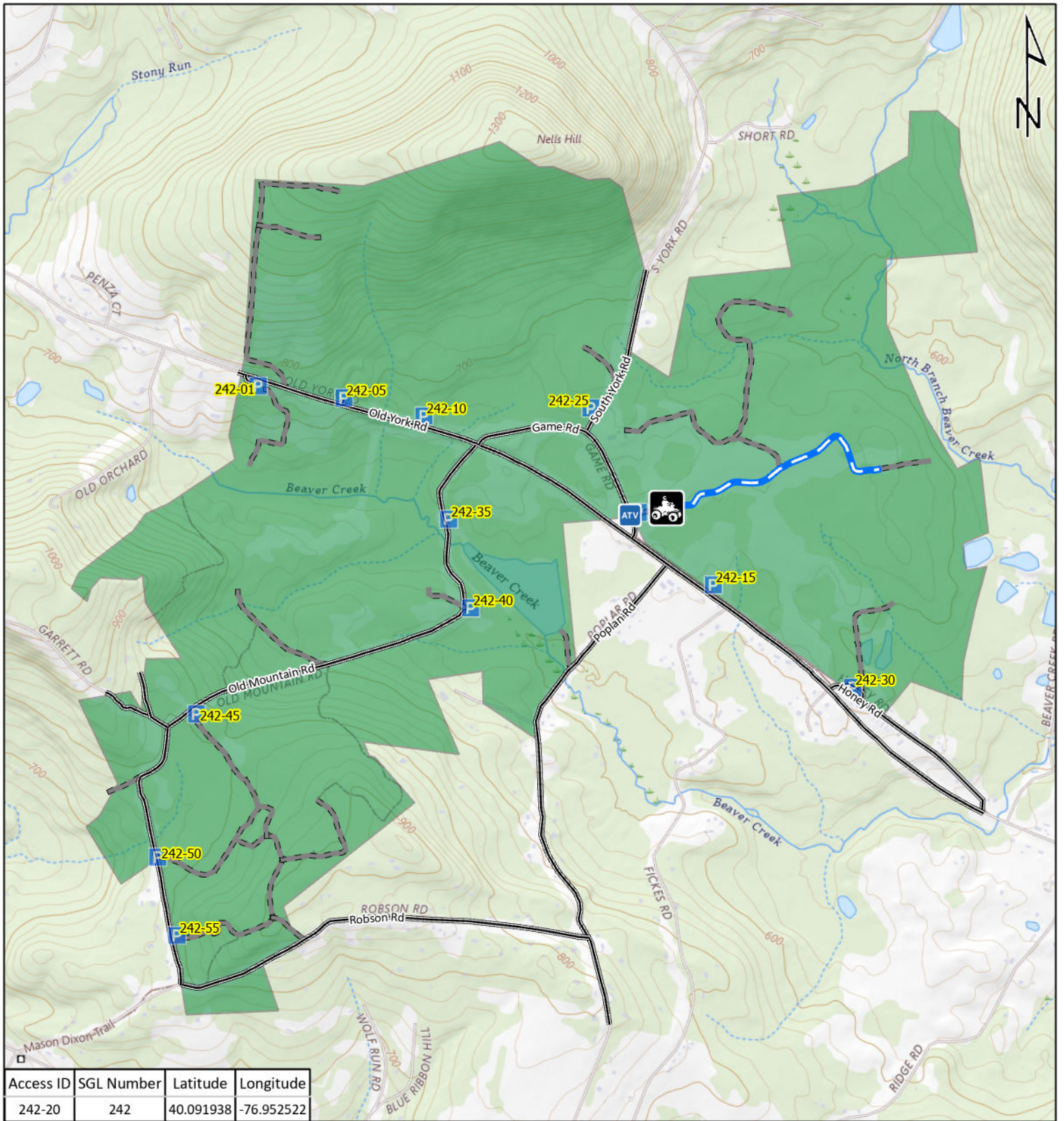
- Emergency Response Points**
- ATV Access
  - Vehicle Access
  - ATV & Vehicle Access
  - Roads Open to Vehicle Traffic
  - Roads Seasonally Open to Vehicle Traffic
  - Roads Closed to Vehicle Traffic



## STATE GAME LAND 230



It is unlawful to ride ATV's on state game lands, except on designated roads open for persons issued a Disabled Person Permit, and who have a valid registration from the Department of Conservation & Natural Resources.

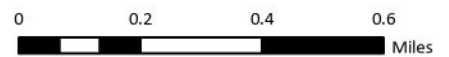
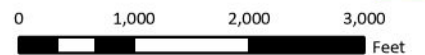


**Emergency Response Points**

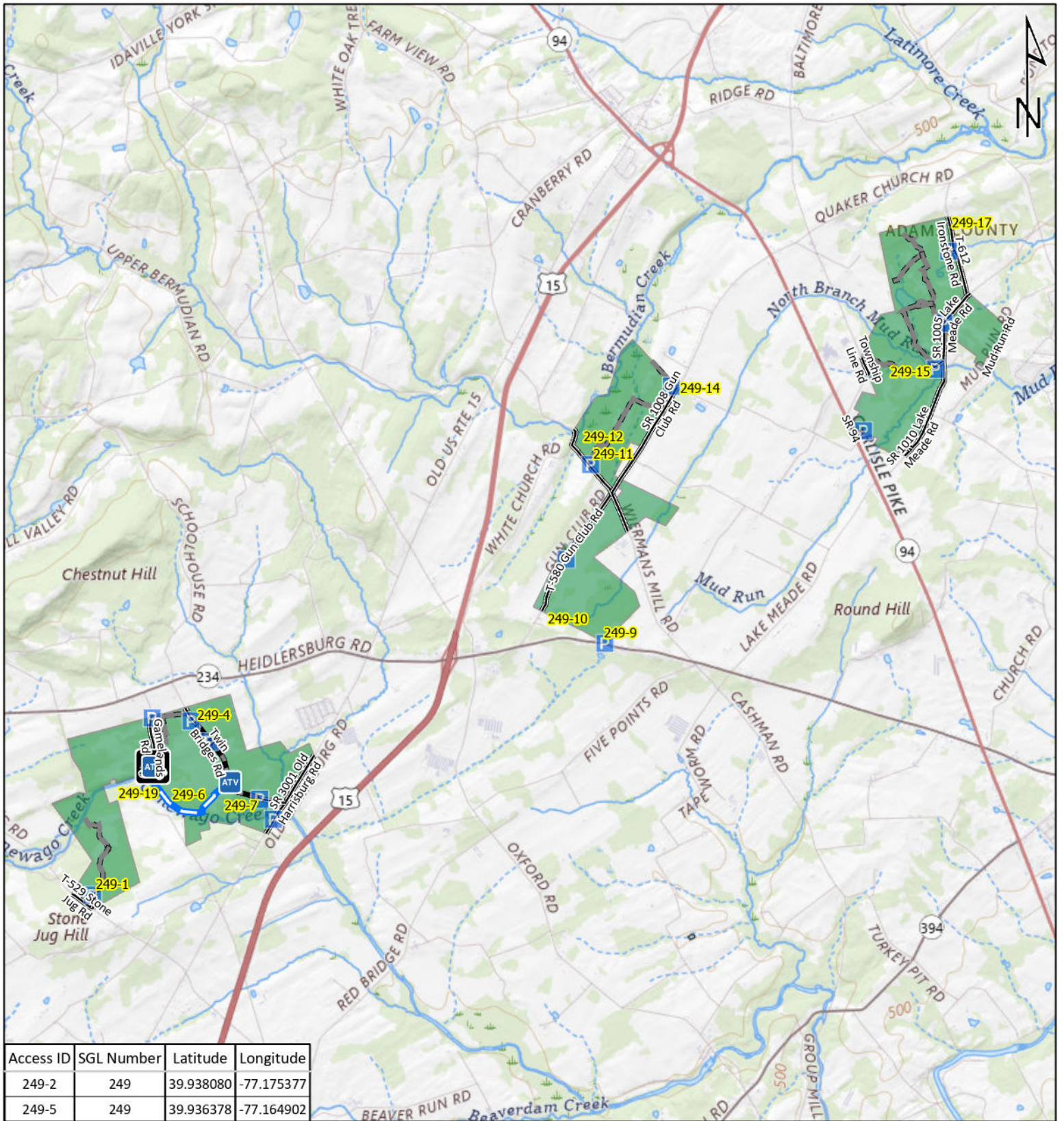
- ATV Access
- Vehicle Access
- ATV & Vehicle Access
- Roads Open to Vehicle Traffic
- Roads Seasonally Open to Vehicle Traffic
- Roads Closed to Vehicle Traffic



**STATE GAME  
LAND 242**



It is unlawful to ride ATV's on state game lands, except on designated roads open for persons issued a Disabled Person Permit, and who have a valid registration from the Department of Conservation & Natural Resources.



**Emergency Response Points**

- ATV Access
- Vehicle Access
- ATV & Vehicle Access
- Roads Open to Vehicle Traffic
- Roads Seasonally Open to Vehicle Traffic
- Roads Closed to Vehicle Traffic



**STATE GAME  
LAND 249**



0 3,000 6,000 9,000

Feet

0 0.7 1.3 2

Miles

It is unlawful to ride ATV's on state game lands, except on designated roads open for persons issued a Disabled Person Permit, and who have a valid registration from the Department of Conservation & Natural Resources.