



PENNSYLVANIA GAME COMMISSION

SOUTHEAST REGION

253 SNYDER ROAD READING, PA 19605 | 1-833-742-4868 (PGC HUNT) 1-833-742-9453 (PGC WILD)

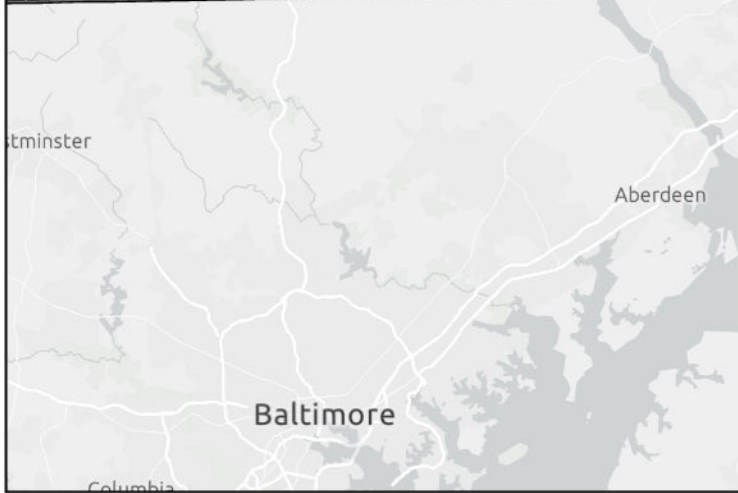
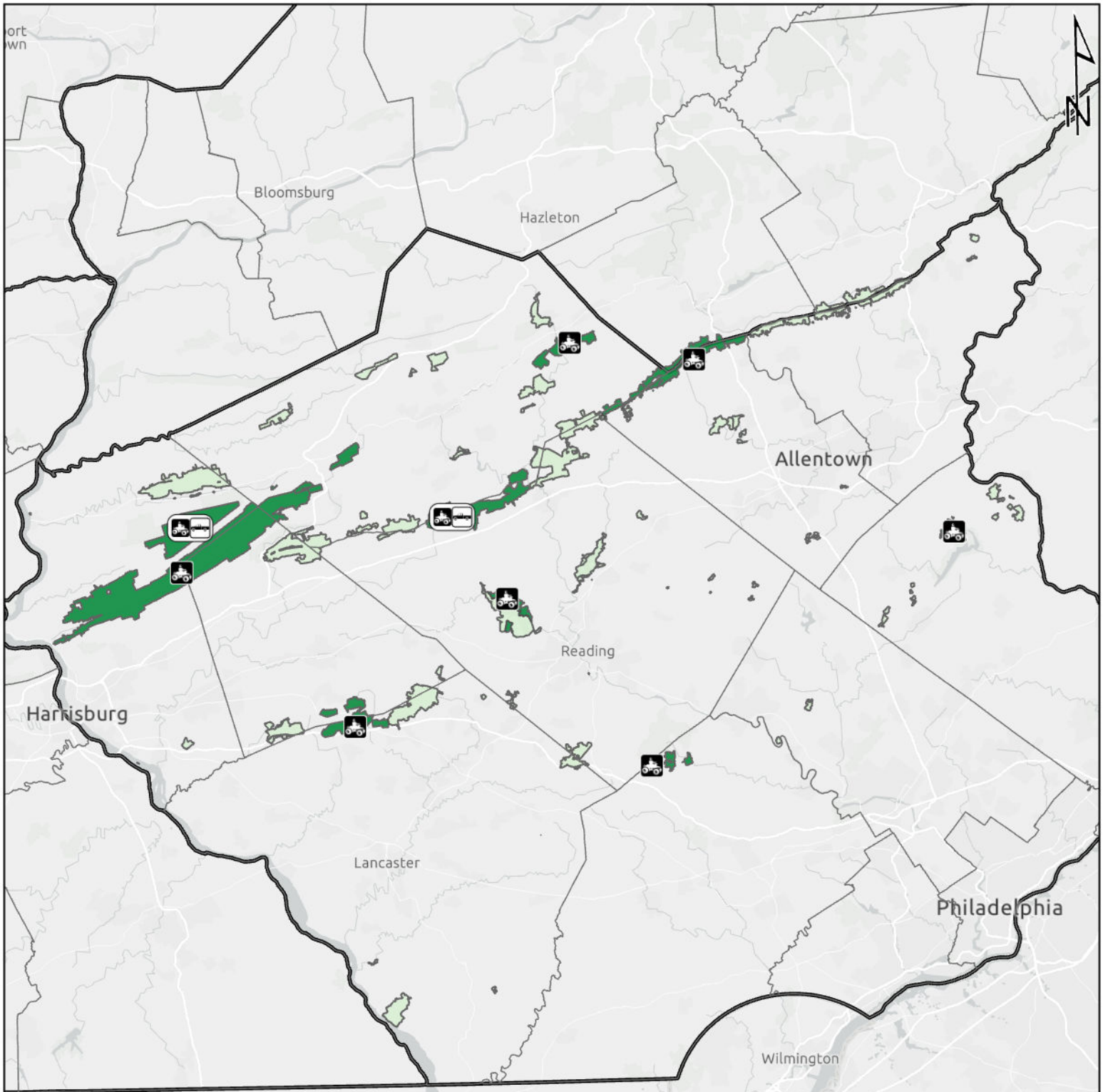


Southeast Region







It is unlawful to ride ATVs on state game lands, except on designated roads open for persons issued a Disabled Persons Permit, and who have a valid registration from the Department of Conservation & Natural Resources.


Table of Contents

Southeast Region Overview Map	SE-2
State Game Lands 43	Berks and Chester counties	SE-3
State Game Lands 110	Berks and Schuylkill counties	SE-4
State Game Lands 156	Lancaster and Lebanon counties	SE-5
State Game Lands 157	Bucks County.....	SE-6
State Game Lands 210	Dauphin County	SE-7
State Game Lands 211	Dauphin, Lebanon, and Schuylkill counties	SE-8
State Game Lands 217	Carbon, Lehigh, and Schuylkill counties	SE-9
State Game Lands 257	Schuylkill County	SE-10
State Game Lands 280	Berks County	SE-11

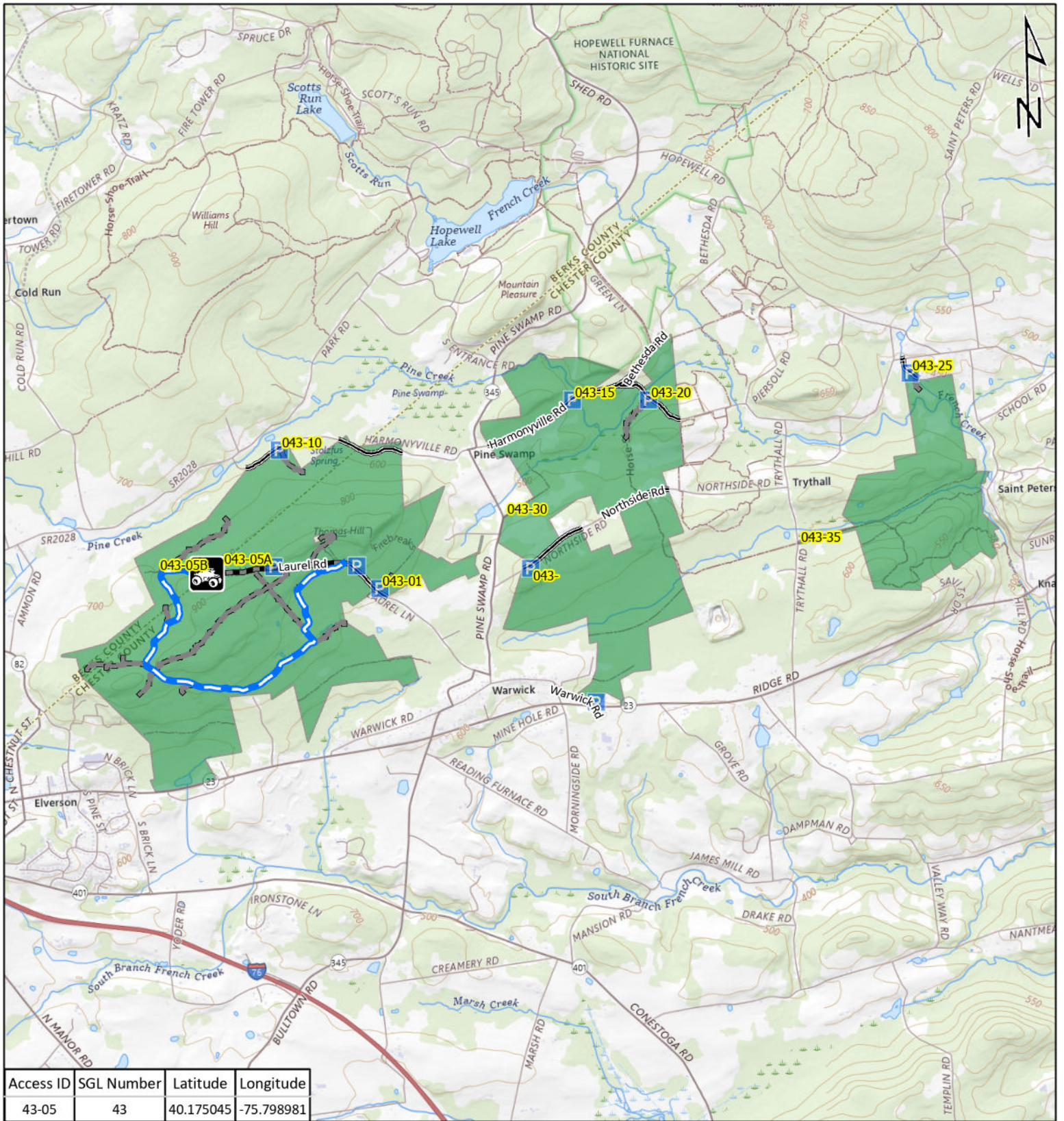


**Pennsylvania Game Commission
Southeast Region**

	ATV Access		Hunters with Disabilities Access
	Vehicle Access		No Additional Access
	ATV or Vehicle Access		PA Game Commission Regions







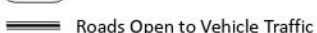

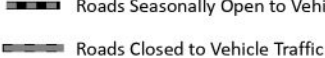
0 10 20 30
 Miles

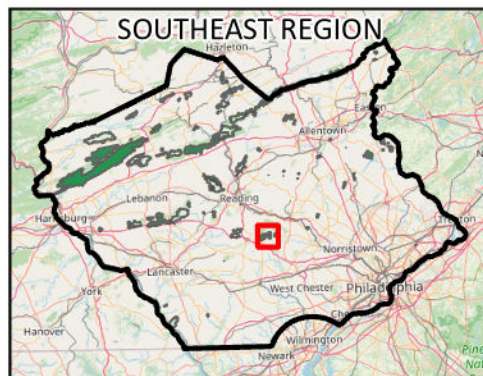
Page SE-2



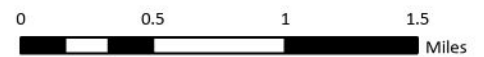
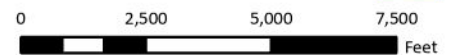
Access ID	SGL Number	Latitude	Longitude
43-05	43	40.175045	-75.798981

Emergency Response Points

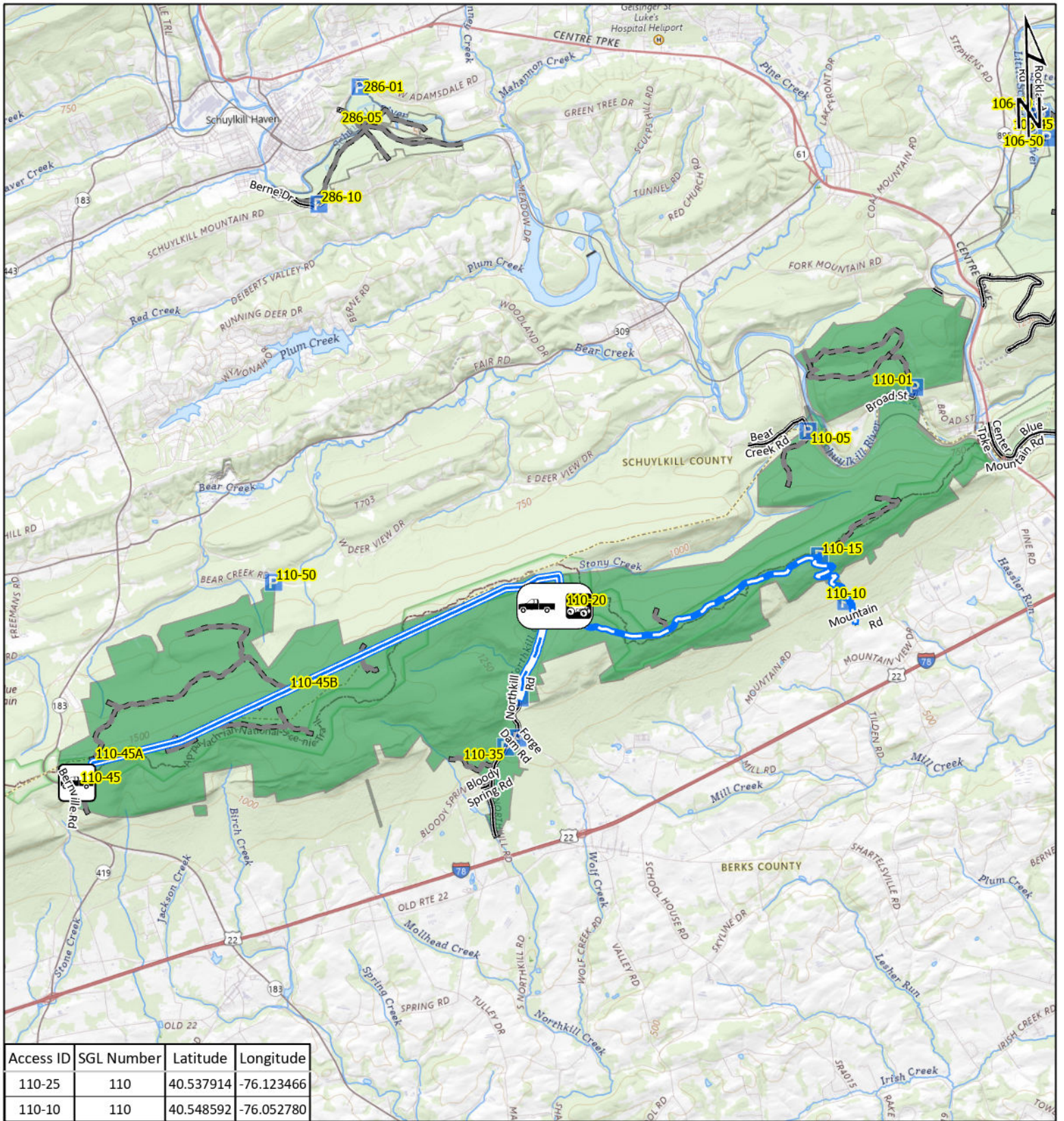
-   ATV Access
-   Vehicle Access
-   ATV & Vehicle Access
-  Roads Open to Vehicle Traffic
-  Roads Seasonally Open to Vehicle Traffic
-  Roads Closed to Vehicle Traffic









**STATE GAME
LAND 43**

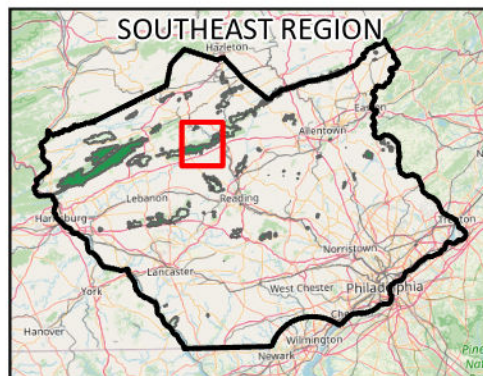


It is unlawful to ride ATVs on state game lands, except on designated roads open for persons issued a Disabled Person Permit, and who have a valid registration from the Department of Conservation & Natural Resources.

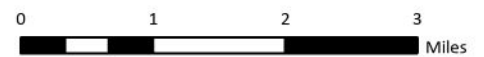
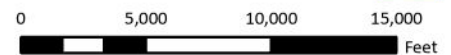


Emergency Response Points

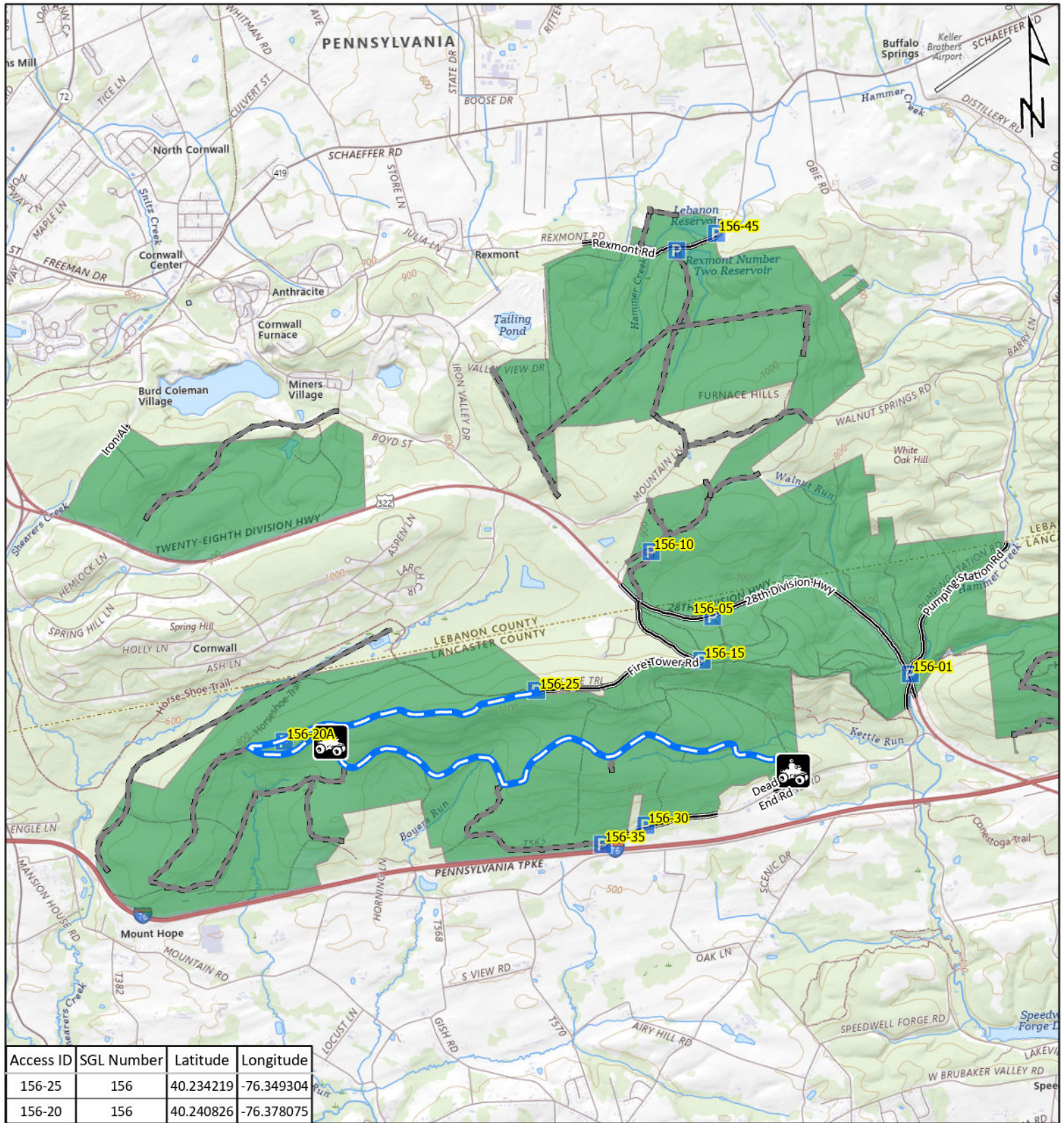
-  Blue line: ATV Access
-  Blue line: Vehicle Access
-  Blue line: ATV & Vehicle Access
-  Solid line: Roads Open to Vehicle Traffic
-  Dashed line: Roads Seasonally Open to Vehicle Traffic
-  Greyed-out line: Roads Closed to Vehicle Traffic



STATE GAME LAND 110

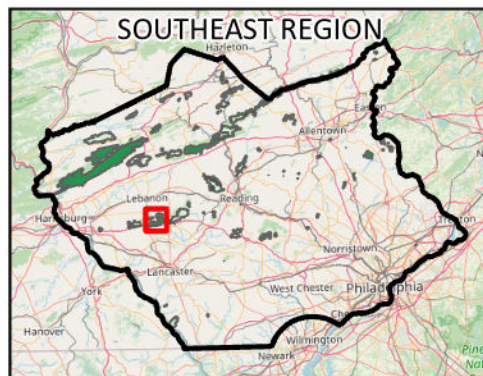


It is unlawful to ride ATV's on state game lands, except on designated roads open for persons issued a Disabled Person Permit, and who have a valid registration from the Department of Conservation & Natural Resources.

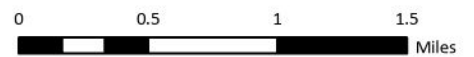
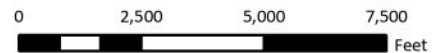


Emergency Response Points

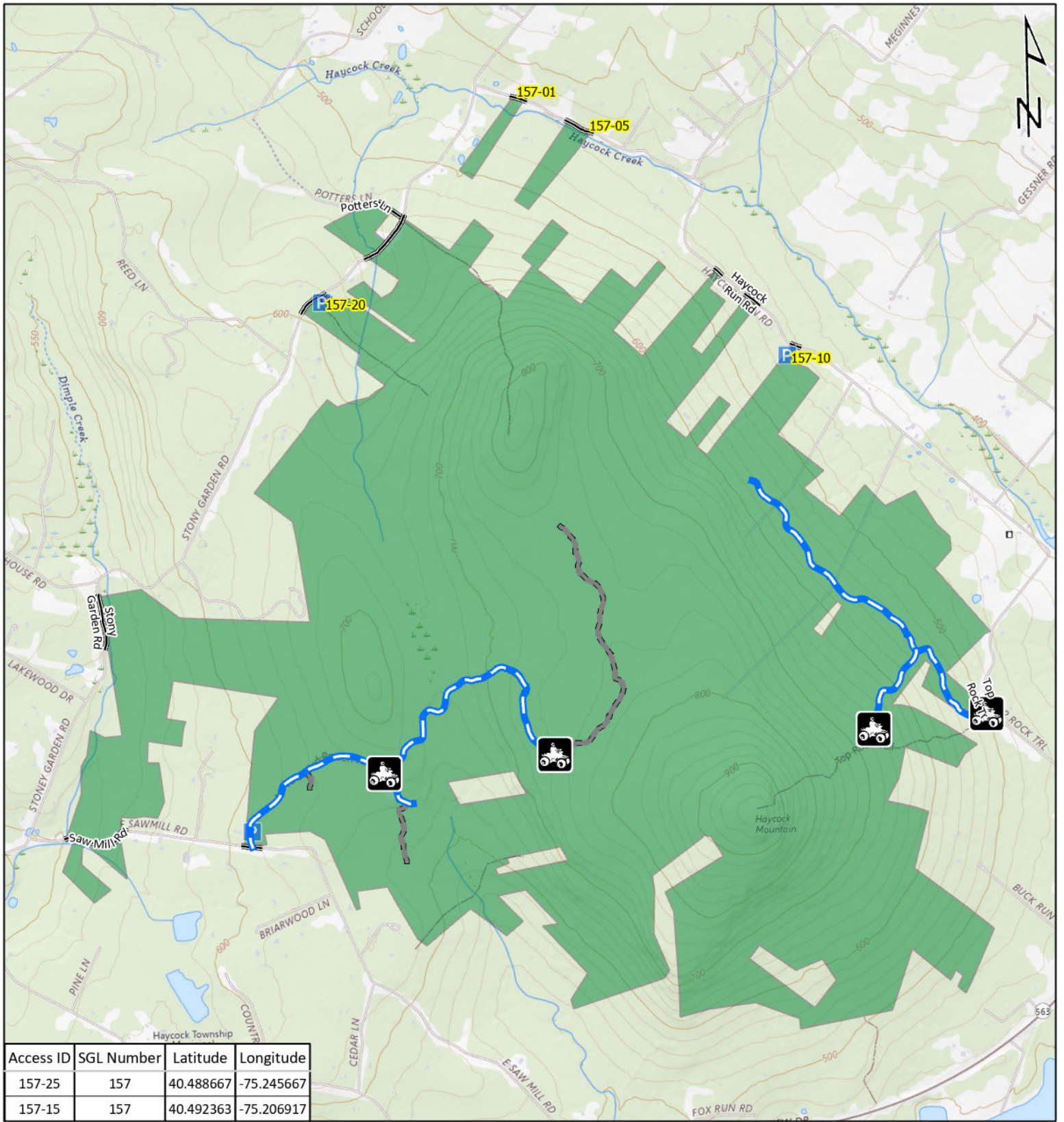
- AT Access
- Vehicle Access
- ATV & Vehicle Access
- Roads Open to Vehicle Traffic
- Roads Seasonally Open to Vehicle Traffic
- Roads Closed to Vehicle Traffic



STATE GAME LAND 156

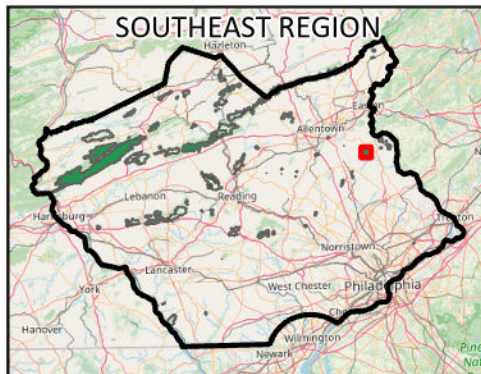


It is unlawful to ride ATV's on state game lands, except on designated roads open for persons issued a Disabled Person Permit, and who have a valid registration from the Department of Conservation & Natural Resources.

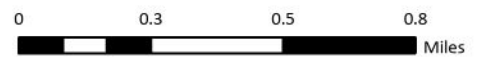
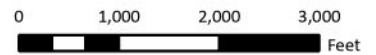


Access ID	SGL Number	Latitude	Longitude
157-25	157	40.488667	-75.245667
157-15	157	40.492363	-75.206917

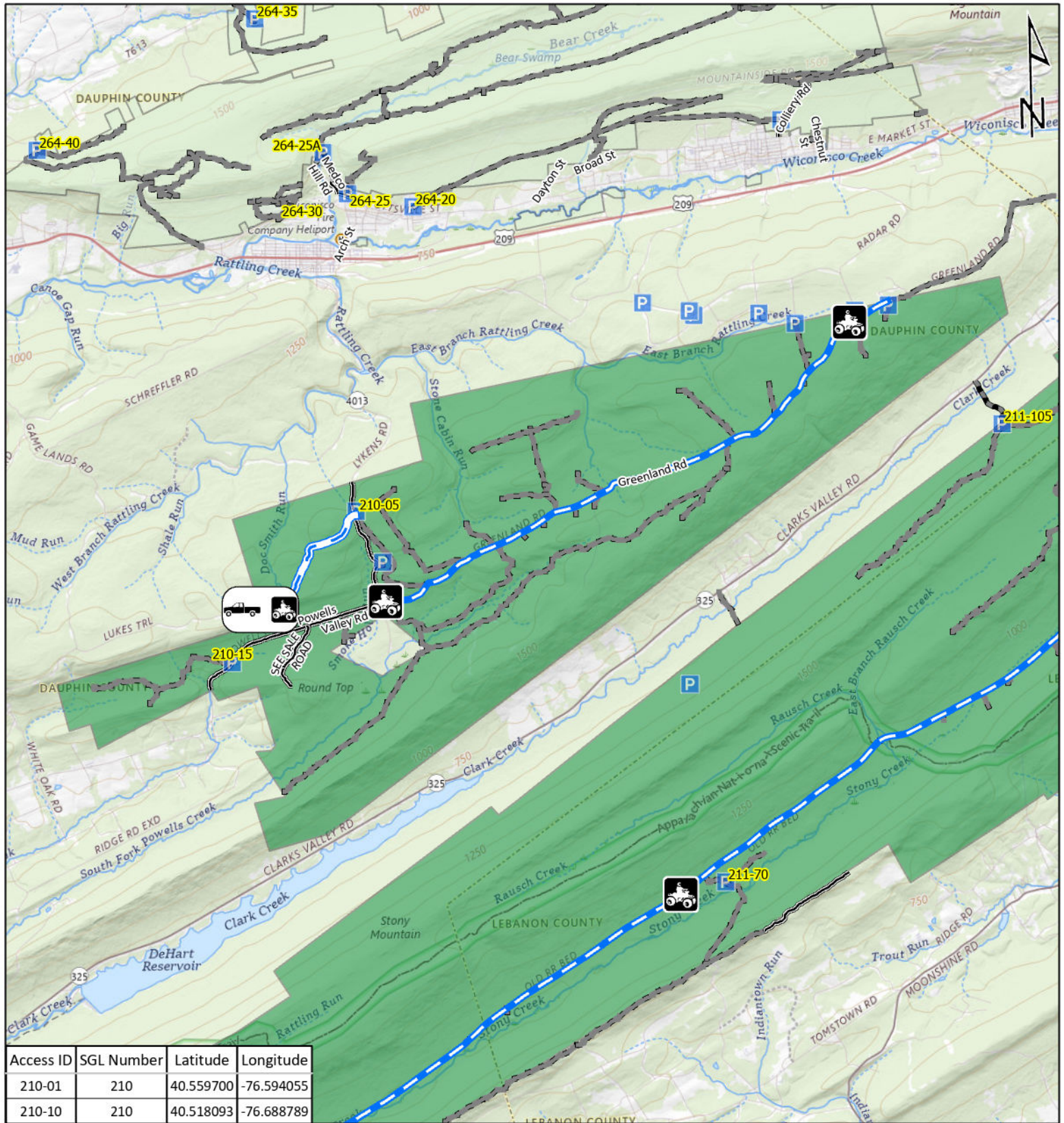
- Emergency Response Points**
- ATV Access
 - Vehicle Access
 - ATV & Vehicle Access
 - Roads Open to Vehicle Traffic
 - Roads Seasonally Open to Vehicle Traffic
 - Roads Closed to Vehicle Traffic



STATE GAME LAND 157

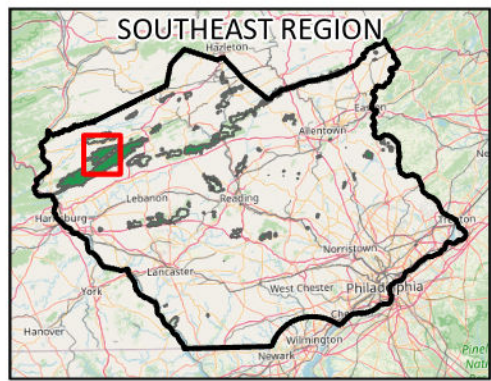


It is unlawful to ride ATV's on state game lands, except on designated roads open for persons issued a Disabled Person Permit, and who have a valid registration from the Department of Conservation & Natural Resources.



Access ID	SGL Number	Latitude	Longitude
210-01	210	40.559700	-76.594055
210-10	210	40.518093	-76.688789

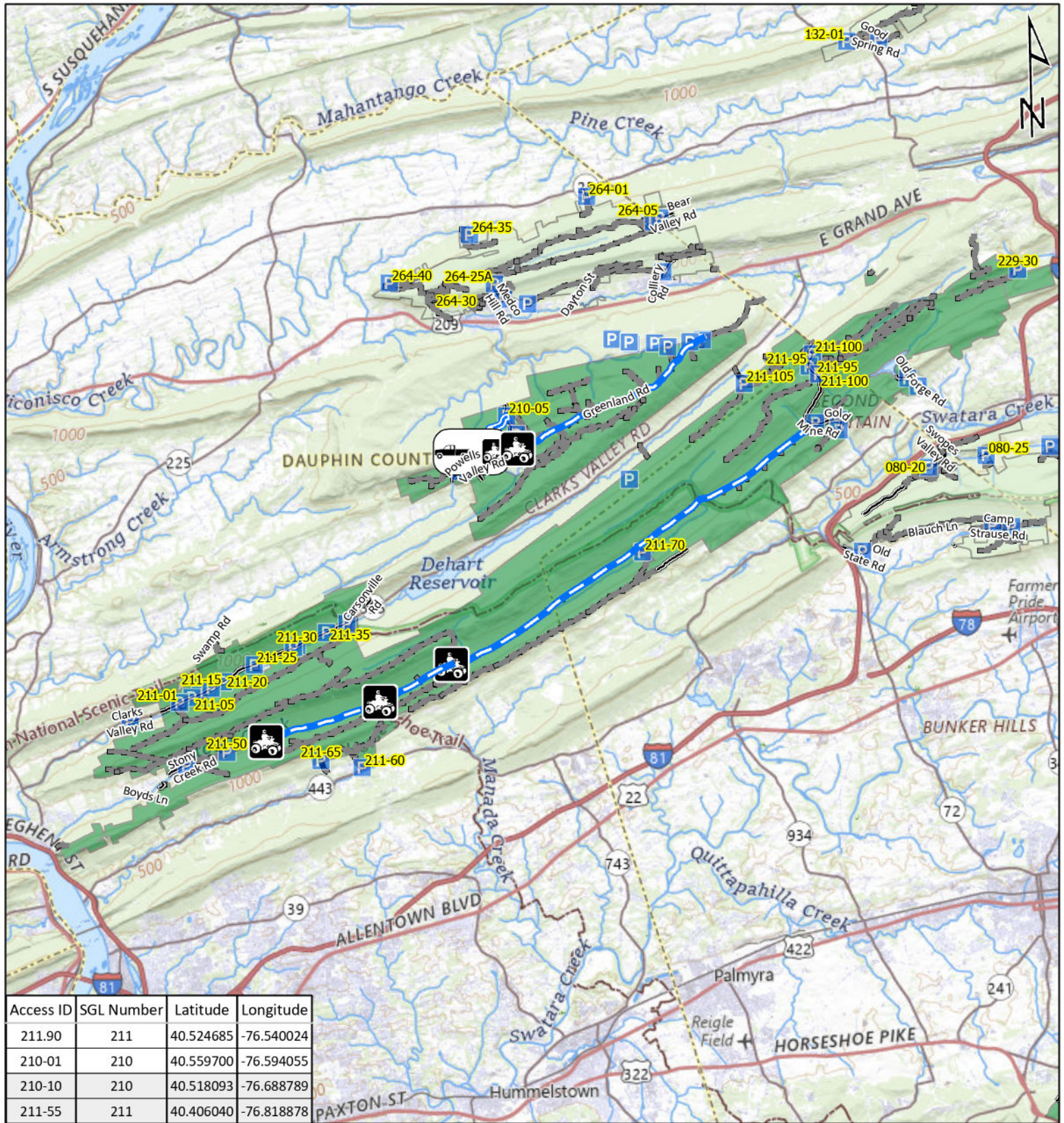
- Emergency Response Points**
- Blue line: ATV Access
 - Blue line: Vehicle Access
 - Blue line: ATV & Vehicle Access
 - Roads Open to Vehicle Traffic
 - Roads Seasonally Open to Vehicle Traffic
 - Roads Closed to Vehicle Traffic



STATE GAME LAND 210

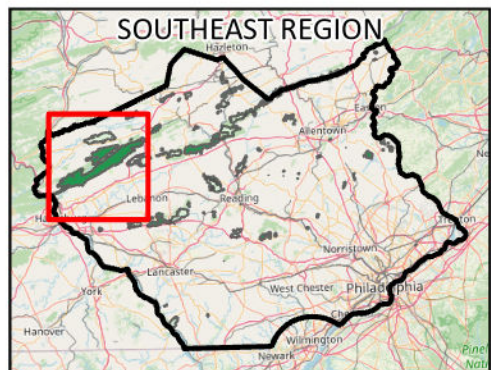


It is unlawful to ride ATVs on state game lands, except on designated roads open for persons issued a Disabled Person Permit, and who have a valid registration from the Department of Conservation & Natural Resources.

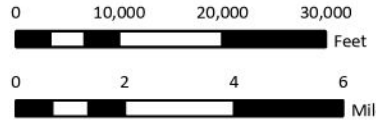


Access ID	SGL Number	Latitude	Longitude
211.90	211	40.524685	-76.540024
210-01	210	40.559700	-76.594055
210-10	210	40.518093	-76.688789
211-55	211	40.406040	-76.818878

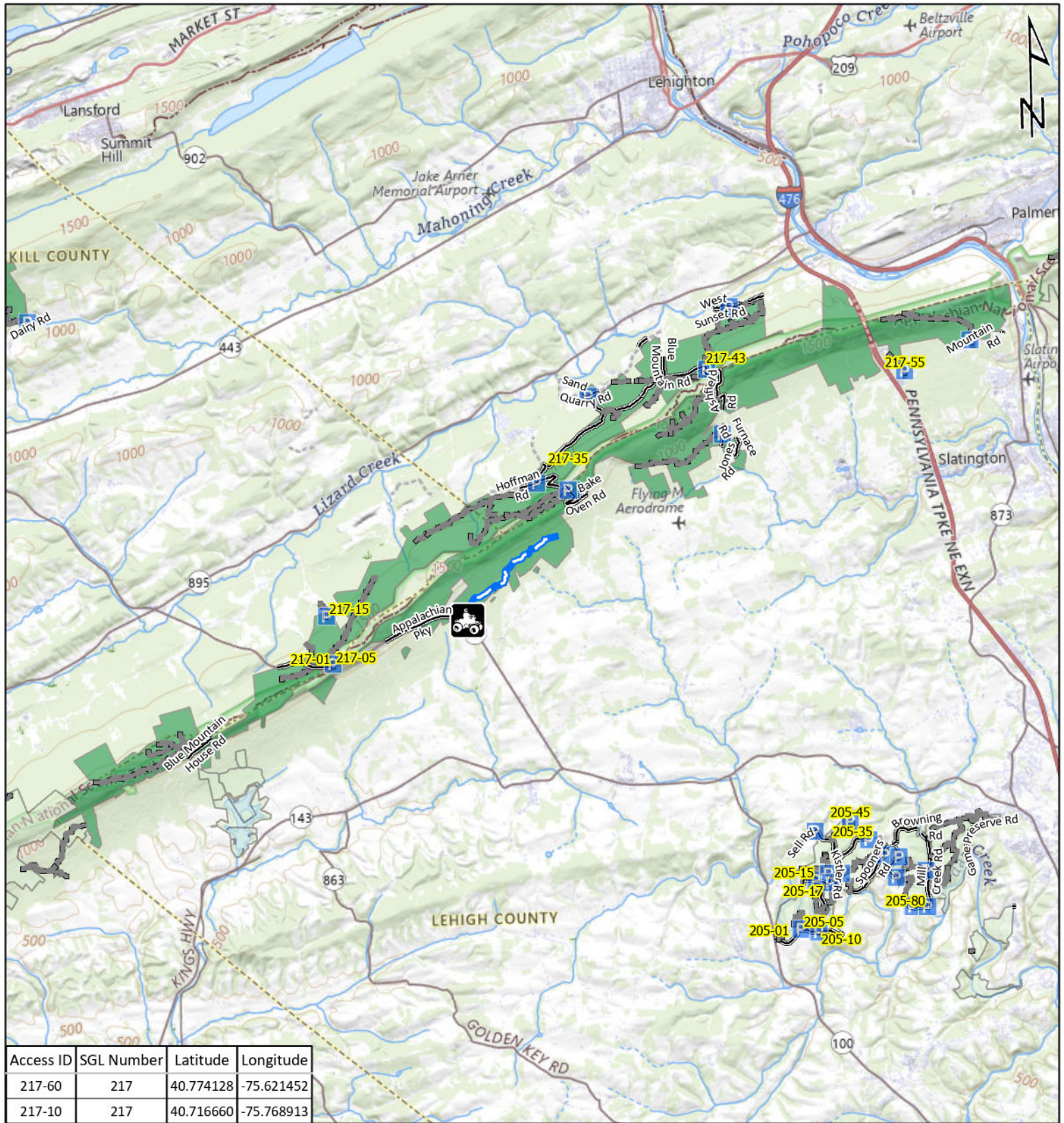
- Emergency Response Points**
- ATV Access
 - Vehicle Access
 - ATV & Vehicle Access
 - Roads Open to Vehicle Traffic
 - Roads Seasonally Open to Vehicle Traffic
 - Roads Closed to Vehicle Traffic



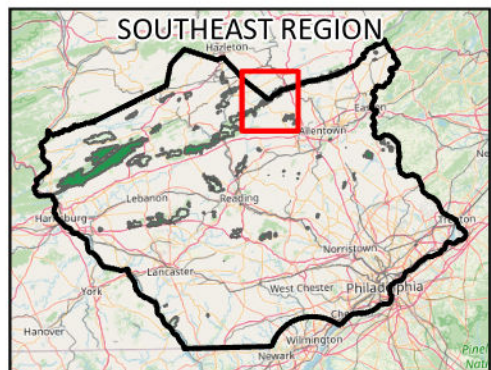
STATE GAME LAND 211



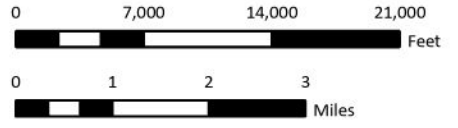
It is unlawful to ride ATVs on state game lands, except on designated roads open for persons issued a Disabled Person Permit, and who have a valid registration from the Department of Conservation & Natural Resources.



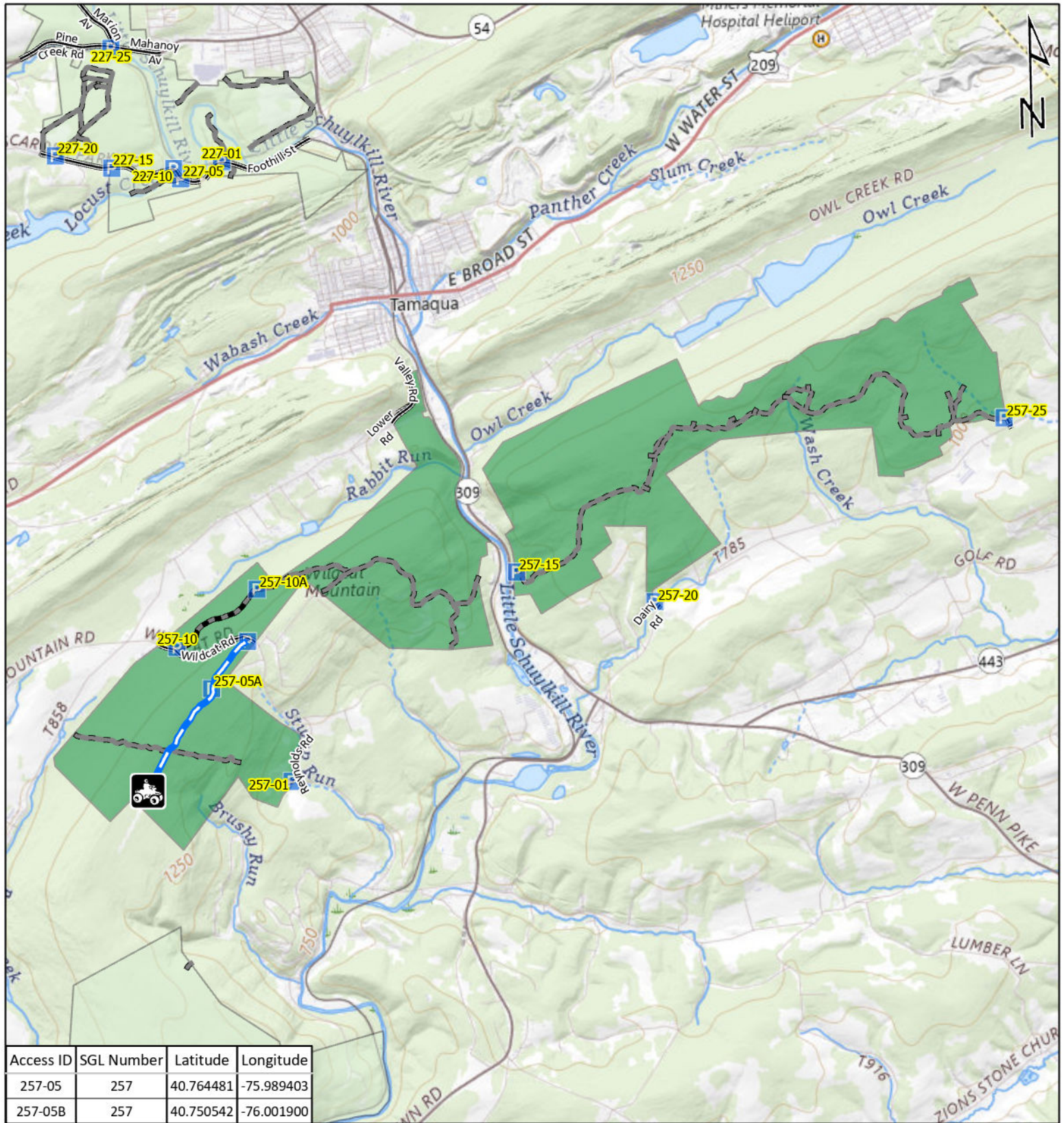
- Emergency Response Points**
- ATV Access
 - Vehicle Access
 - ATV & Vehicle Access
 - Roads Open to Vehicle Traffic
 - Roads Seasonally Open to Vehicle Traffic
 - Roads Closed to Vehicle Traffic



STATE GAME LAND 217

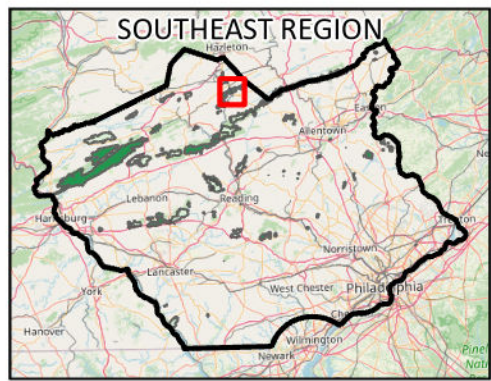


It is unlawful to ride ATV's on state game lands, except on designated roads open for persons issued a Disabled Person Permit, and who have a valid registration from the Department of Conservation & Natural Resources.



Access ID	SGL Number	Latitude	Longitude
257-05	257	40.764481	-75.989403
257-05B	257	40.750542	-76.001900

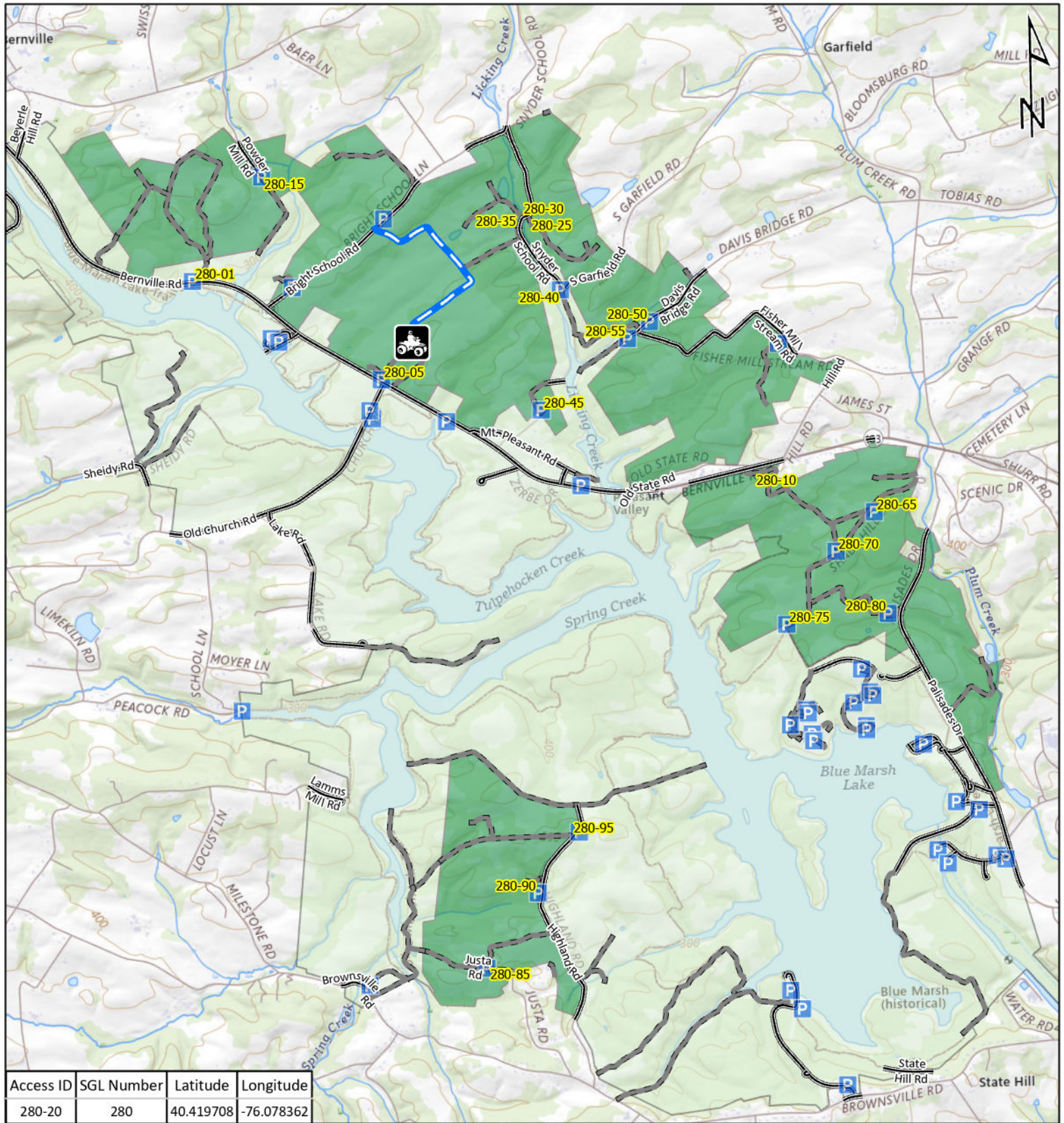
- Emergency Response Points**
- ATV Access
 - Vehicle Access
 - ATV & Vehicle Access
 - Roads Open to Vehicle Traffic
 - Roads Seasonally Open to Vehicle Traffic
 - Roads Closed to Vehicle Traffic



STATE GAME LAND 257

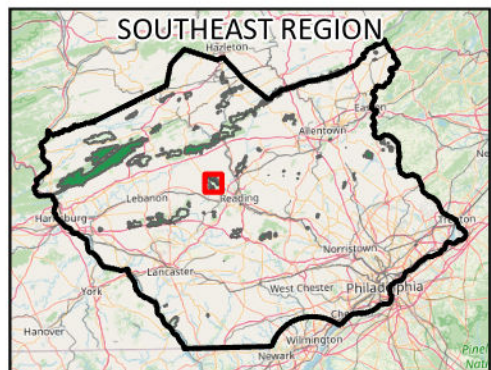


It is unlawful to ride ATVs on state game lands, except on designated roads open for persons issued a Disabled Person Permit, and who have a valid registration from the Department of Conservation & Natural Resources.



Access ID	SGL Number	Latitude	Longitude
280-20	280	40.419708	-76.078362

- Emergency Response Points**
- ATV Access
 - Vehicle Access
 - ATV & Vehicle Access
 - Roads Open to Vehicle Traffic
 - Roads Seasonally Open to Vehicle Traffic
 - Roads Closed to Vehicle Traffic



STATE GAME LAND 280



It is unlawful to ride ATVs on state game lands, except on designated roads open for persons issued a Disabled Person Permit, and who have a valid registration from the Department of Conservation & Natural Resources.