



PENNSYLVANIA GAME COMMISSION

SOUTHWEST REGION

4820 ROUTE 711 BOLIVAR, PA 15923 | 1-833-742-4868 (PGC HUNT) 1-833-742-9453 (PGC WILD)

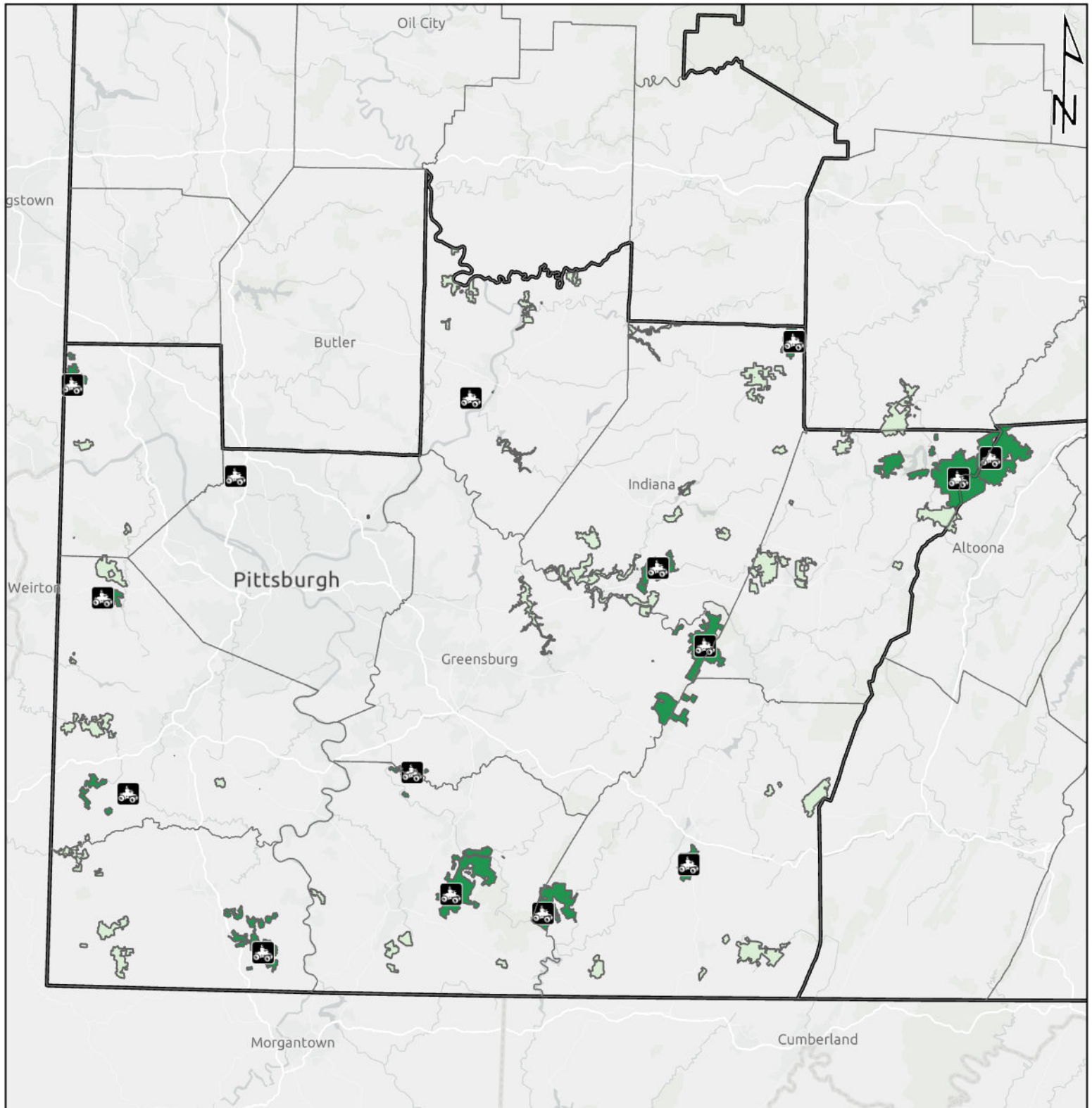


Southwest Region







It is unlawful to ride ATVs on state game lands, except on designated roads open for persons issued a Disabled Persons Permit, and who have a valid registration from the Department of Conservation & Natural Resources.


Table of Contents

Southwest Region Overview Map	SW-2
State Game Lands 42	Cambria, Somerset, and Westmoreland counties	SW-3
State Game Lands 50	Somerset County.....	SW-4
State Game Lands 51	Fayette County.....	SW-5
State Game Lands 108	Blair and Cambria counties	SW-6
State Game Lands 111	Fayette and Somerset counties.....	SW-7
State Game Lands 117	Washington County.....	SW-8
State Game Lands 158	Blair and Cambria counties	SW-9
State Game Lands 174	Clearfield and Indiana counties	SW-10
State Game Lands 203	Allegheny County	SW-11
State Game Lands 223	Greene County	SW-12
State Game Lands 245	Washington County.....	SW-13
State Game Lands 247	Armstrong County.....	SW-14
State Game Lands 276	Indiana County	SW-15
State Game Lands 285	Beaver County.....	SW-16
State Game Lands 296	Fayette and Westmoreland counties	SW-17

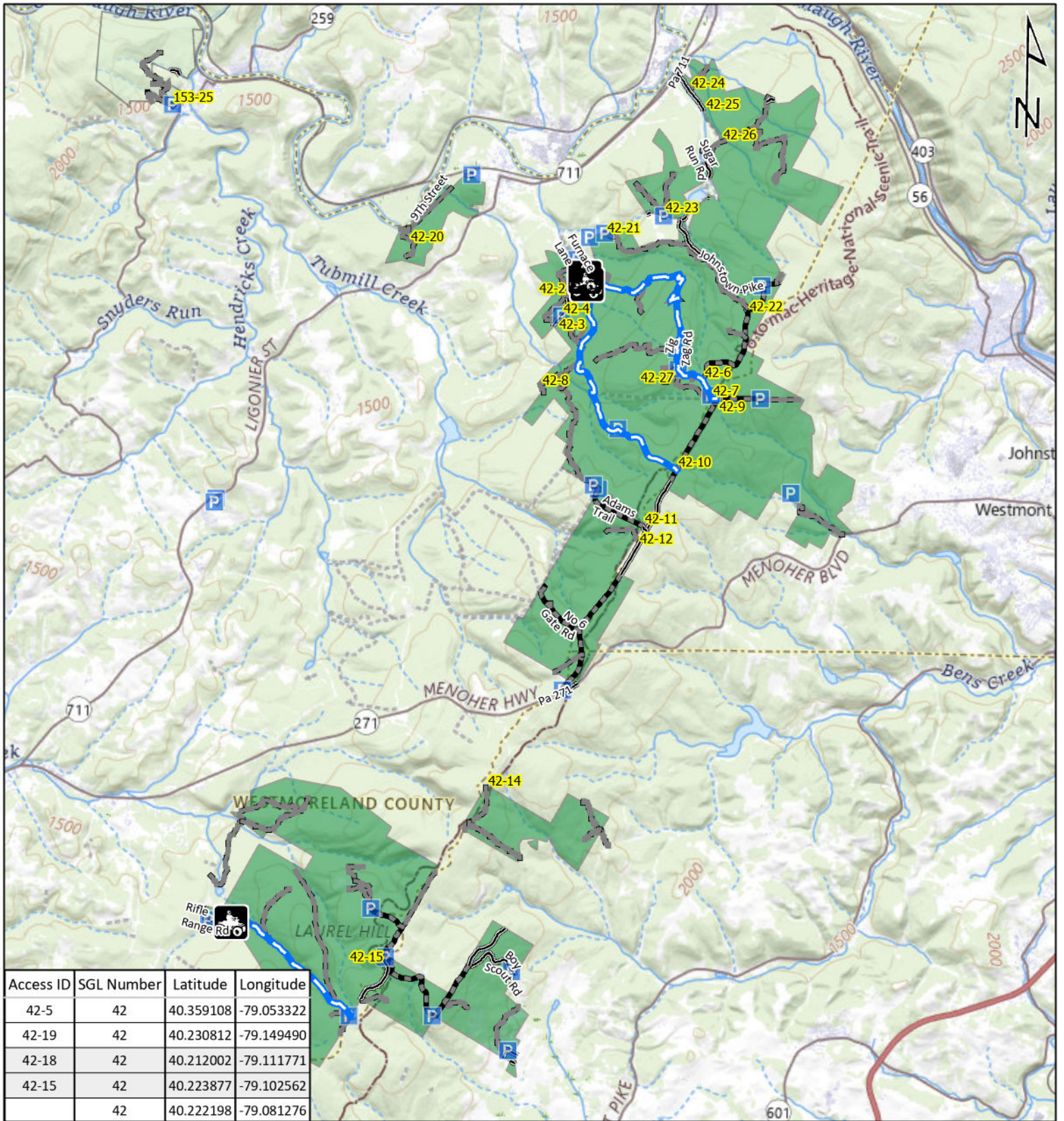


**Pennsylvania Game Commission
Southwest Region**

	ATV Access		Hunters with Disabilities Access
	Vehicle Access		No Additional Access
	ATV or Vehicle Access		PA Game Commission Regions

0 10 20 30 40
 Miles

Page SW-2

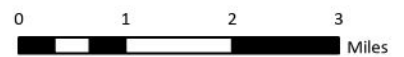
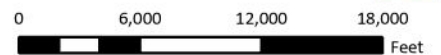


Emergency Response Points

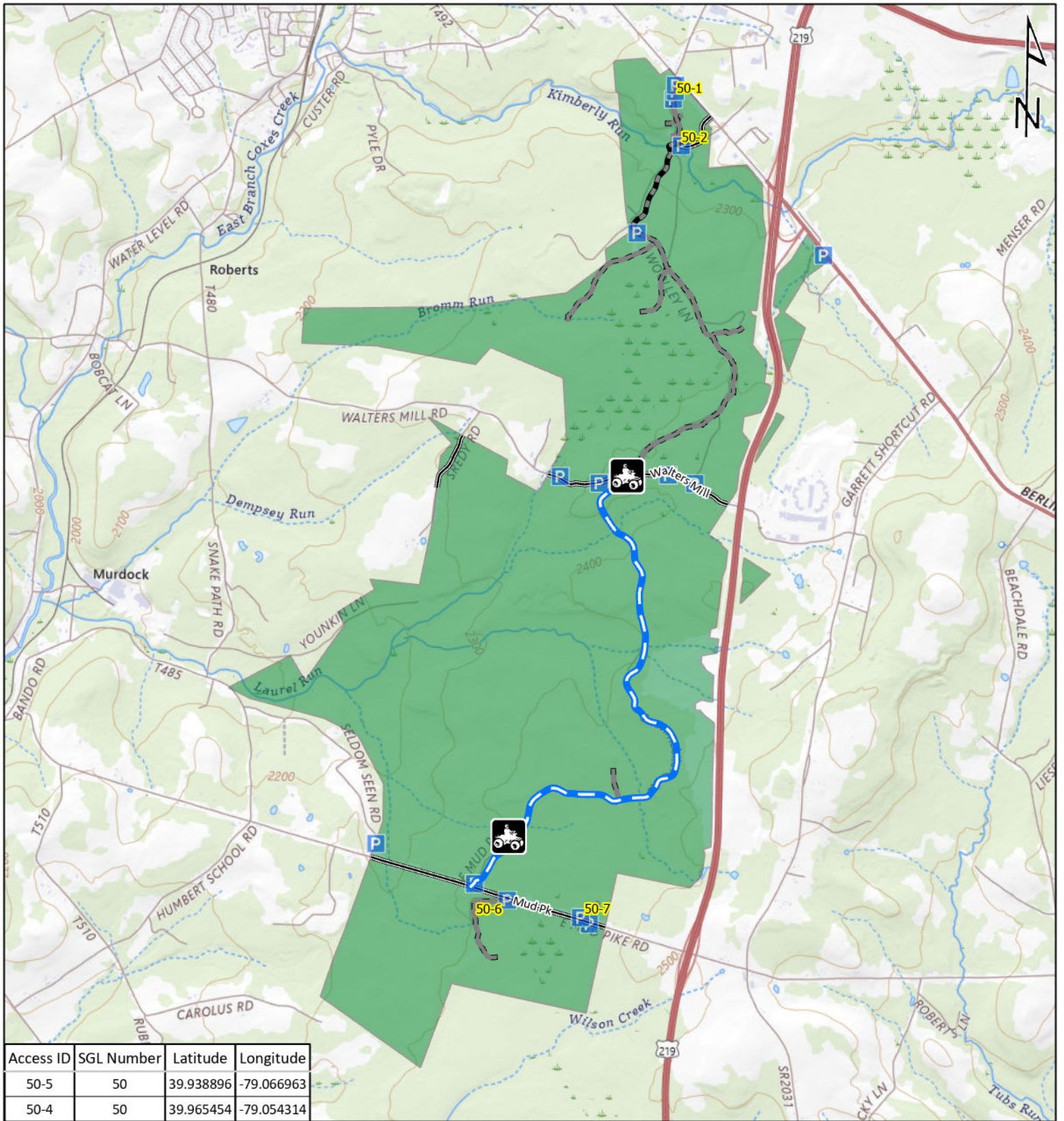
-   ATV Access
-   Vehicle Access
-   ATV & Vehicle Access
-  Roads Open to Vehicle Traffic
-  Roads Seasonally Open to Vehicle Traffic
-  Roads Closed to Vehicle Traffic



STATE GAME LAND 42



It is unlawful to ride ATVs on state game lands, except on designated roads open for persons issued a Disabled Person Permit, and who have a valid registration from the Department of Conservation & Natural Resources.

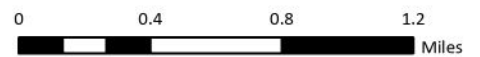
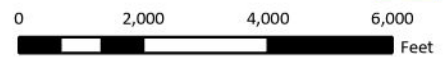


Emergency Response Points

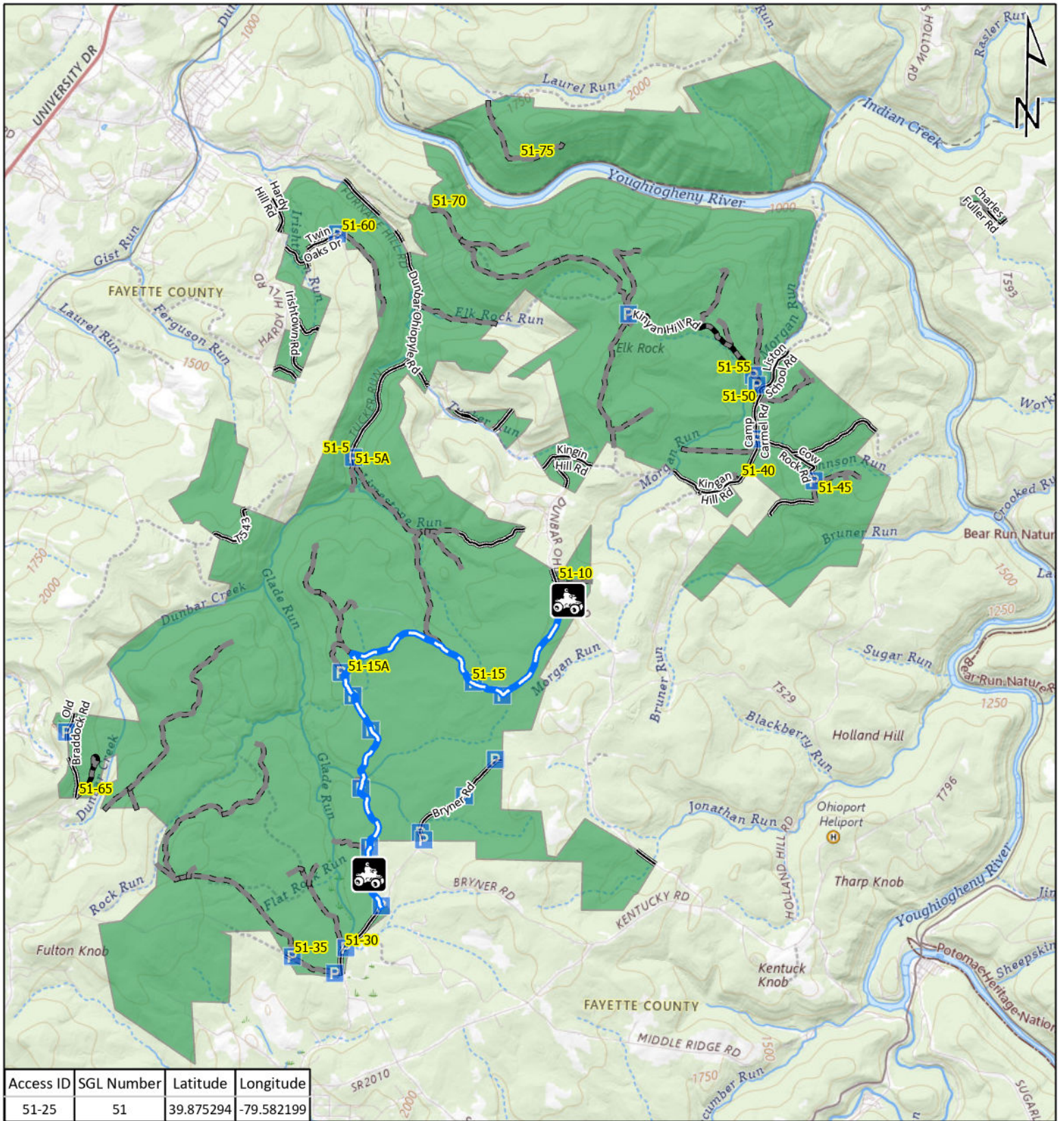
-   ATV Access
-   Vehicle Access
-   ATV & Vehicle Access
-  Roads Open to Vehicle Traffic
-  Roads Seasonally Open to Vehicle Traffic
-  Roads Closed to Vehicle Traffic



STATE GAME LAND 50



It is unlawful to ride ATVs on state game lands, except on designated roads open for persons issued a Disabled Person Permit, and who have a valid registration from the Department of Conservation & Natural Resources.



Access ID	SGL Number	Latitude	Longitude
51-25	51	39.875294	-79.582199

Emergency Response Points

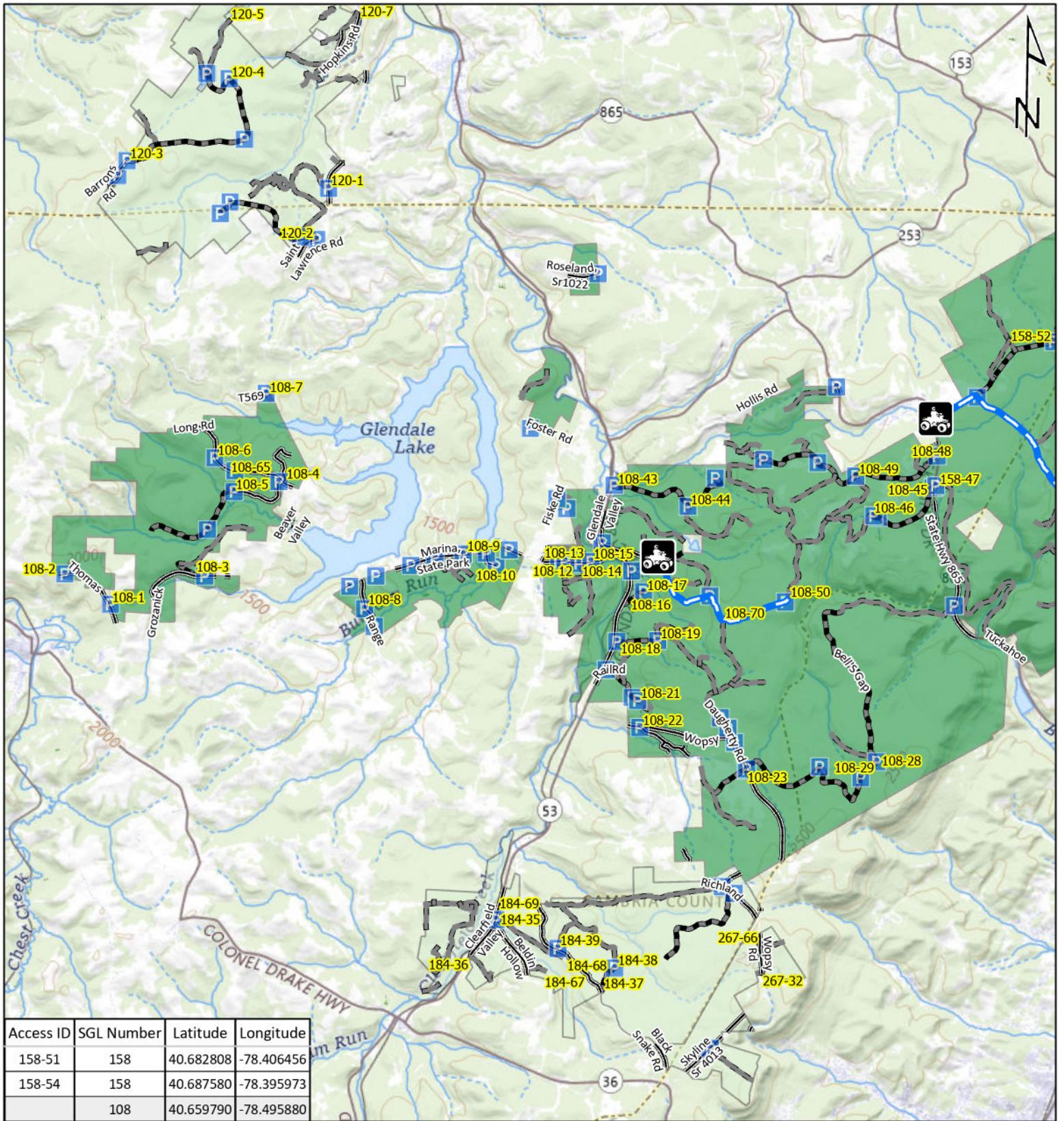
-   ATV Access
-   Vehicle Access
-   ATV & Vehicle Access
-  Roads Open to Vehicle Traffic
-  Roads Seasonally Open to Vehicle Traffic
-  Roads Closed to Vehicle Traffic



STATE GAME LAND 51



It is unlawful to ride ATV's on state game lands, except on designated roads open for persons issued a Disabled Person Permit, and who have a valid registration from the Department of Conservation & Natural Resources.



Access ID	SGL Number	Latitude	Longitude
158-51	158	40.682808	-78.406456
158-54	158	40.687580	-78.395973
	108	40.659790	-78.495880

Emergency Response Points

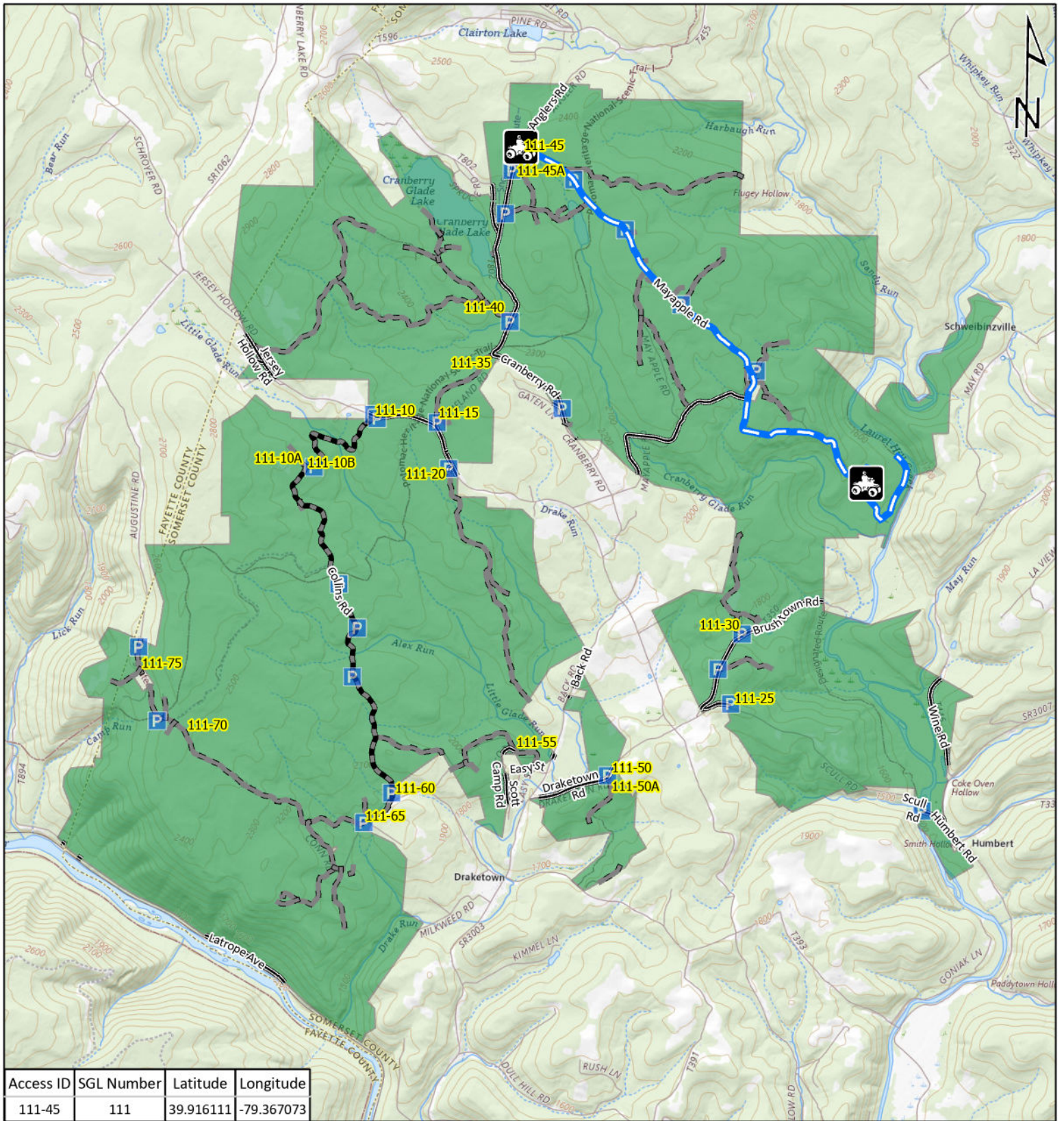
-   ATV Access
-   Vehicle Access
-   ATV & Vehicle Access
-  Roads Open to Vehicle Traffic
-  Roads Seasonally Open to Vehicle Traffic
-  Roads Closed to Vehicle Traffic



STATE GAME LAND 108



It is unlawful to ride ATV's on state game lands, except on designated roads open for persons issued a Disabled Person Permit, and who have a valid registration from the Department of Conservation & Natural Resources.

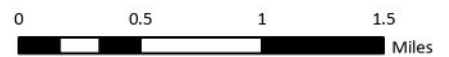
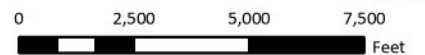


Emergency Response Points

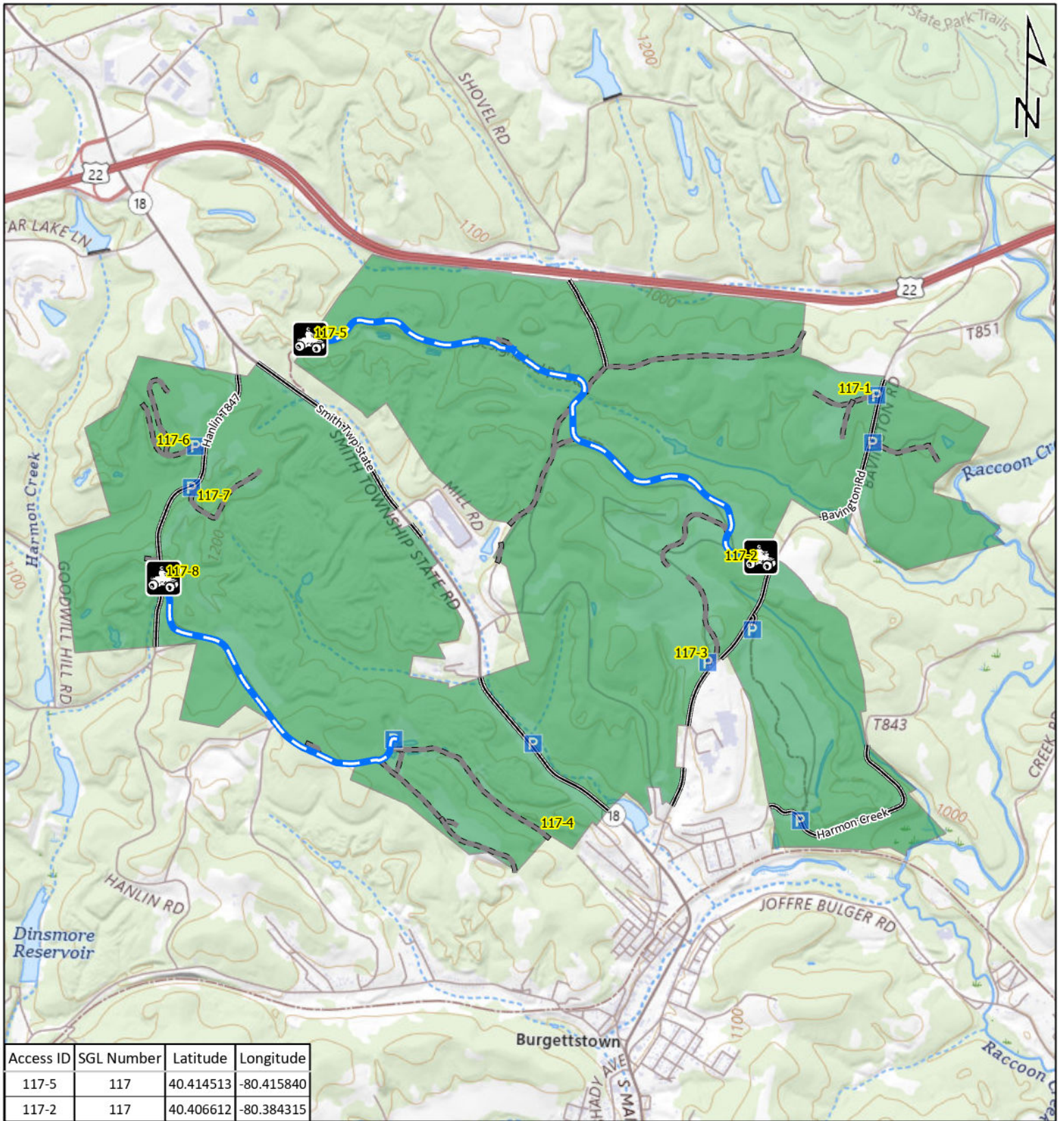
- ATV Access
- Vehicle Access
- ATV & Vehicle Access
- Roads Open to Vehicle Traffic
- Roads Seasonally Open to Vehicle Traffic
- Roads Closed to Vehicle Traffic



**STATE GAME
LAND 111**



It is unlawful to ride ATV's on state game lands, except on designated roads open for persons issued a Disabled Person Permit, and who have a valid registration from the Department of Conservation & Natural Resources.



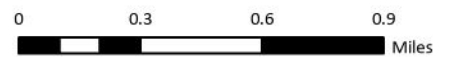
Access ID	SGL Number	Latitude	Longitude
117-5	117	40.414513	-80.415840
117-2	117	40.406612	-80.384315

Emergency Response Points

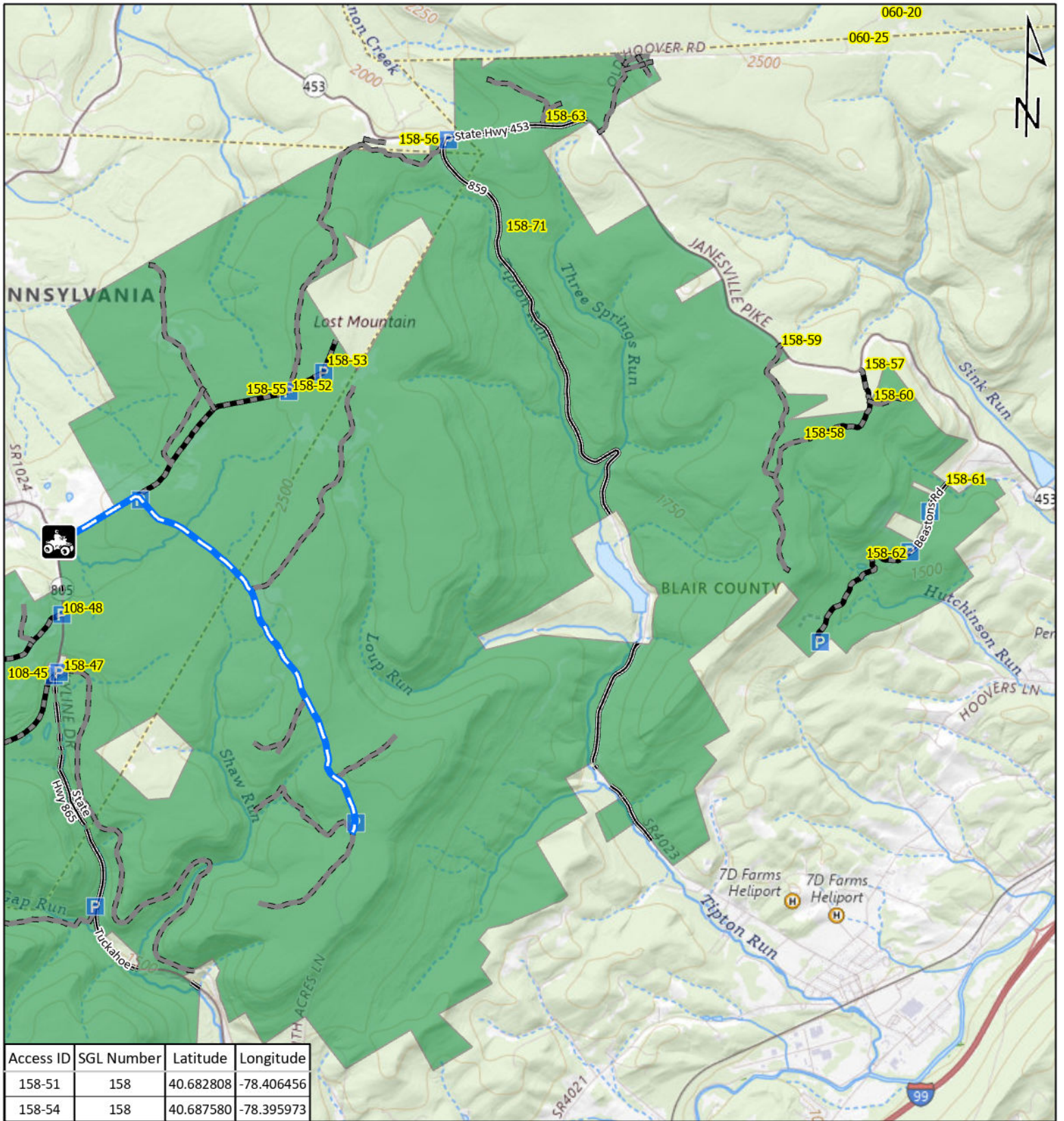
-   ATV Access
-   Vehicle Access
-   ATV & Vehicle Access
-  Roads Open to Vehicle Traffic
-  Roads Seasonally Open to Vehicle Traffic
-  Roads Closed to Vehicle Traffic



**STATE GAME
LAND 117**



It is unlawful to ride ATV's on state game lands, except on designated roads open for persons issued a Disabled Person Permit, and who have a valid registration from the Department of Conservation & Natural Resources.



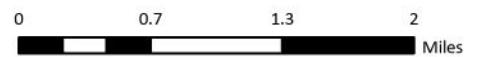
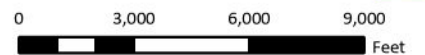
Access ID	SGL Number	Latitude	Longitude
158-51	158	40.682808	-78.406456
158-54	158	40.687580	-78.395973

Emergency Response Points

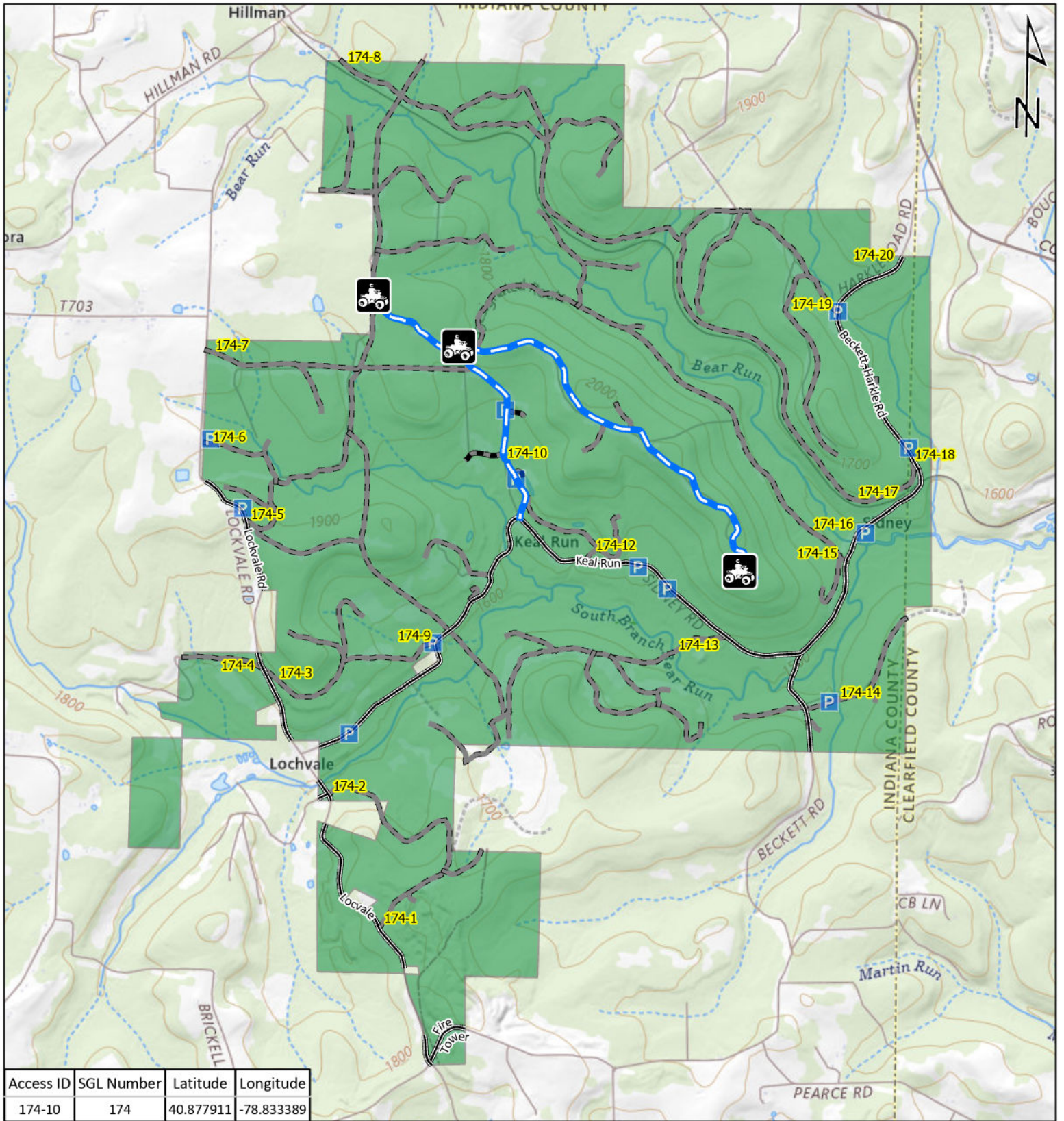
- ATV Access
- Vehicle Access
- ATV & Vehicle Access
- Roads Open to Vehicle Traffic
- Roads Seasonally Open to Vehicle Traffic
- Roads Closed to Vehicle Traffic



**STATE GAME
LAND 158**



It is unlawful to ride ATV's on state game lands, except on designated roads open for persons issued a Disabled Person Permit, and who have a valid registration from the Department of Conservation & Natural Resources.

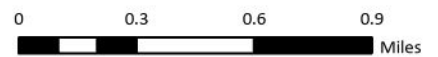
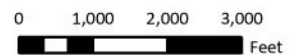


Emergency Response Points

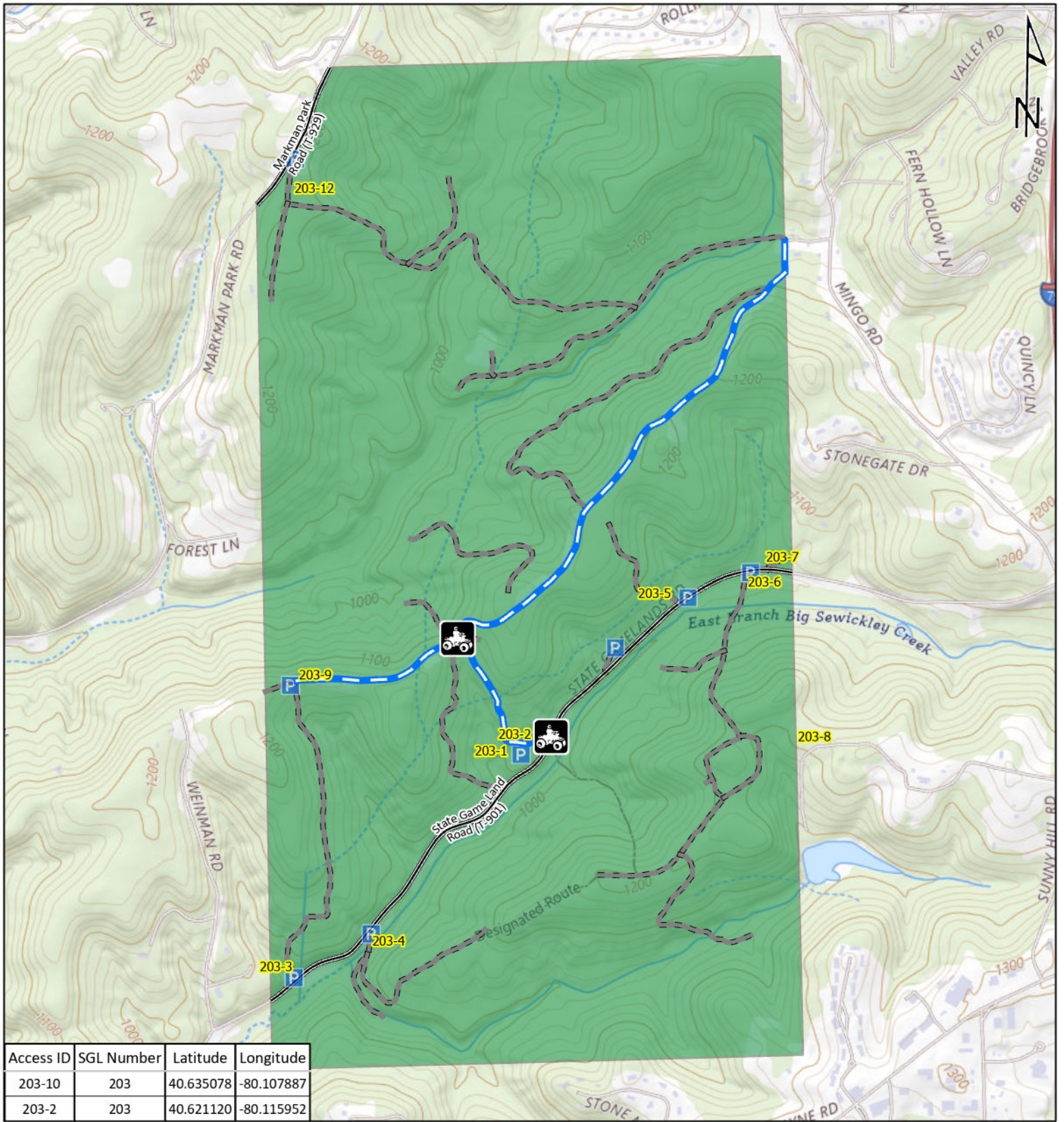
- ATV Access
- Vehicle Access
- ATV & Vehicle Access
- Roads Open to Vehicle Traffic
- Roads Seasonally Open to Vehicle Traffic
- Roads Closed to Vehicle Traffic



**STATE GAME
LAND 174**



It is unlawful to ride ATVs on state game lands, except on designated roads open for persons issued a Disabled Person Permit, and who have a valid registration from the Department of Conservation & Natural Resources.

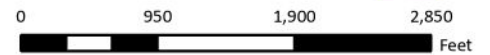


Emergency Response Points

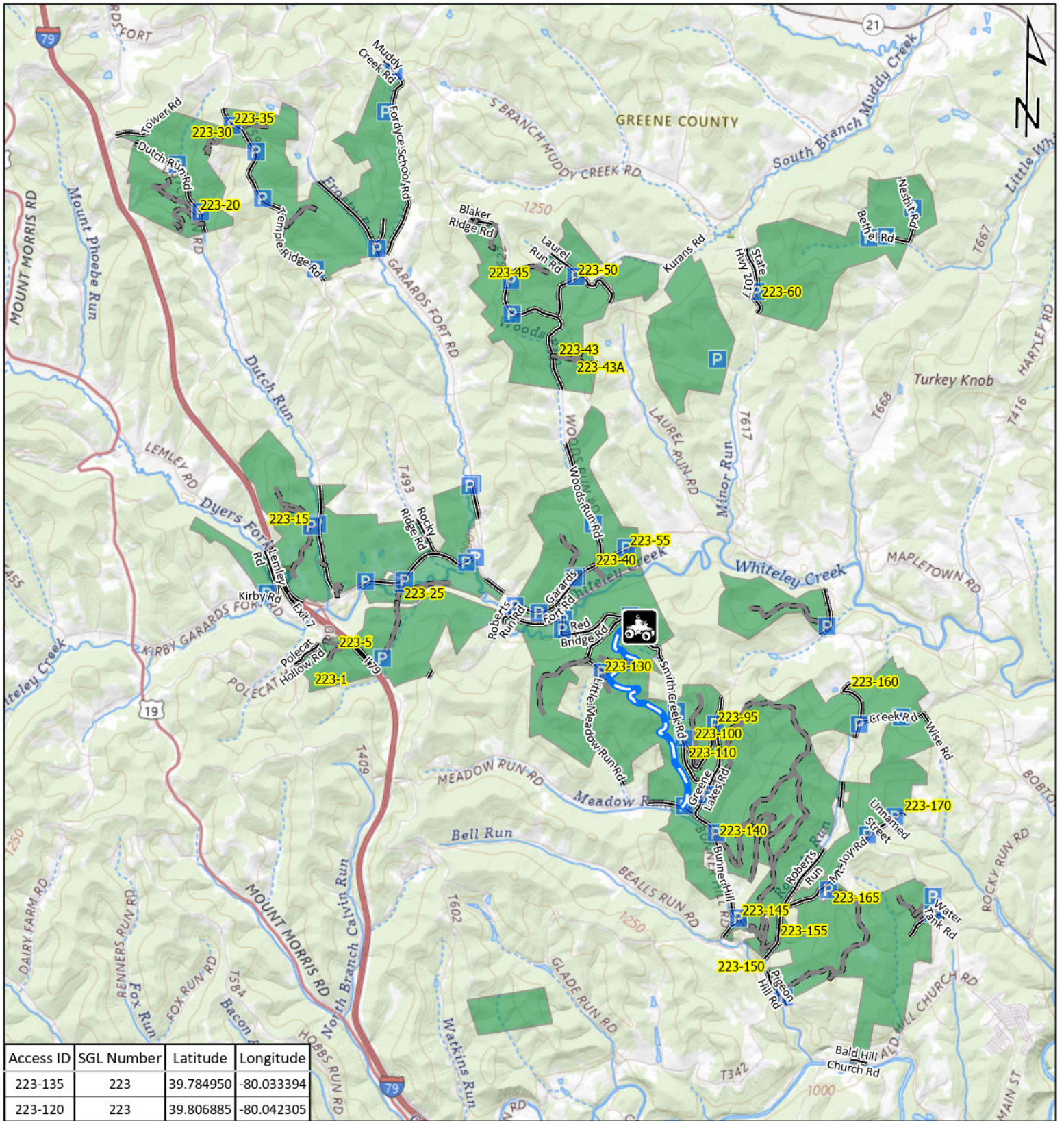
-   ATV Access
-   Vehicle Access
-   ATV & Vehicle Access
-  Roads Open to Vehicle Traffic
-  Roads Seasonally Open to Vehicle Traffic
-  Roads Closed to Vehicle Traffic



STATE GAME LAND 203



It is unlawful to ride ATV's on state game lands, except on designated roads open for persons issued a Disabled Person Permit, and who have a valid registration from the Department of Conservation & Natural Resources.



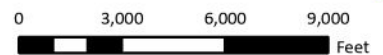
Access ID	SGL Number	Latitude	Longitude
223-135	223	39.784950	-80.033394
223-120	223	39.806885	-80.042305

Emergency Response Points

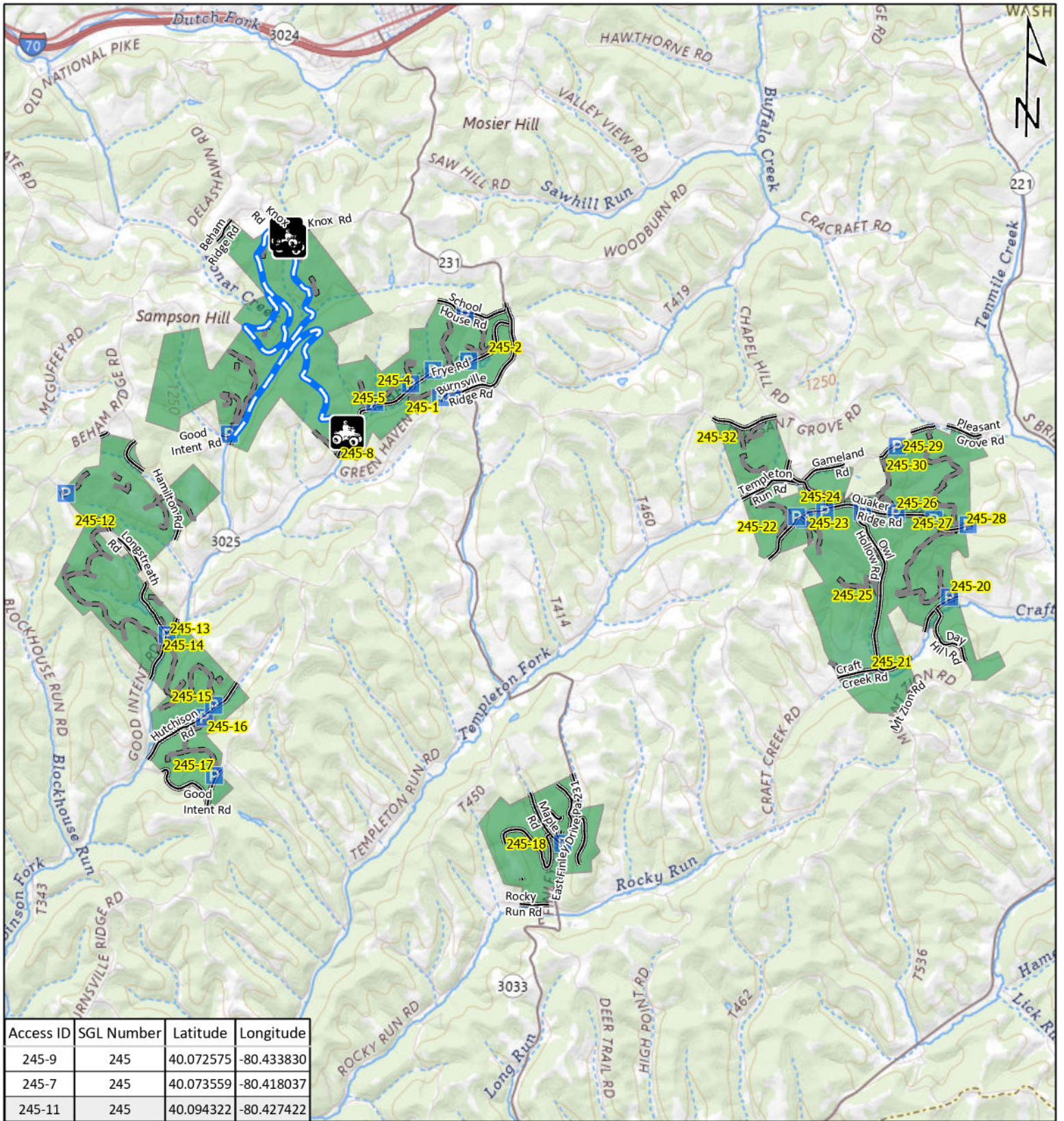
-  — ATV Access
-  — Vehicle Access
-  — ATV & Vehicle Access
-  — Roads Open to Vehicle Traffic
-  — Roads Seasonally Open to Vehicle Traffic
-  — Roads Closed to Vehicle Traffic



**STATE GAME
LAND 223**



It is unlawful to ride ATVs on state game lands, except on designated roads open for persons issued a Disabled Person Permit, and who have a valid registration from the Department of Conservation & Natural Resources.

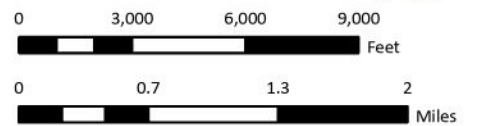


Emergency Response Points

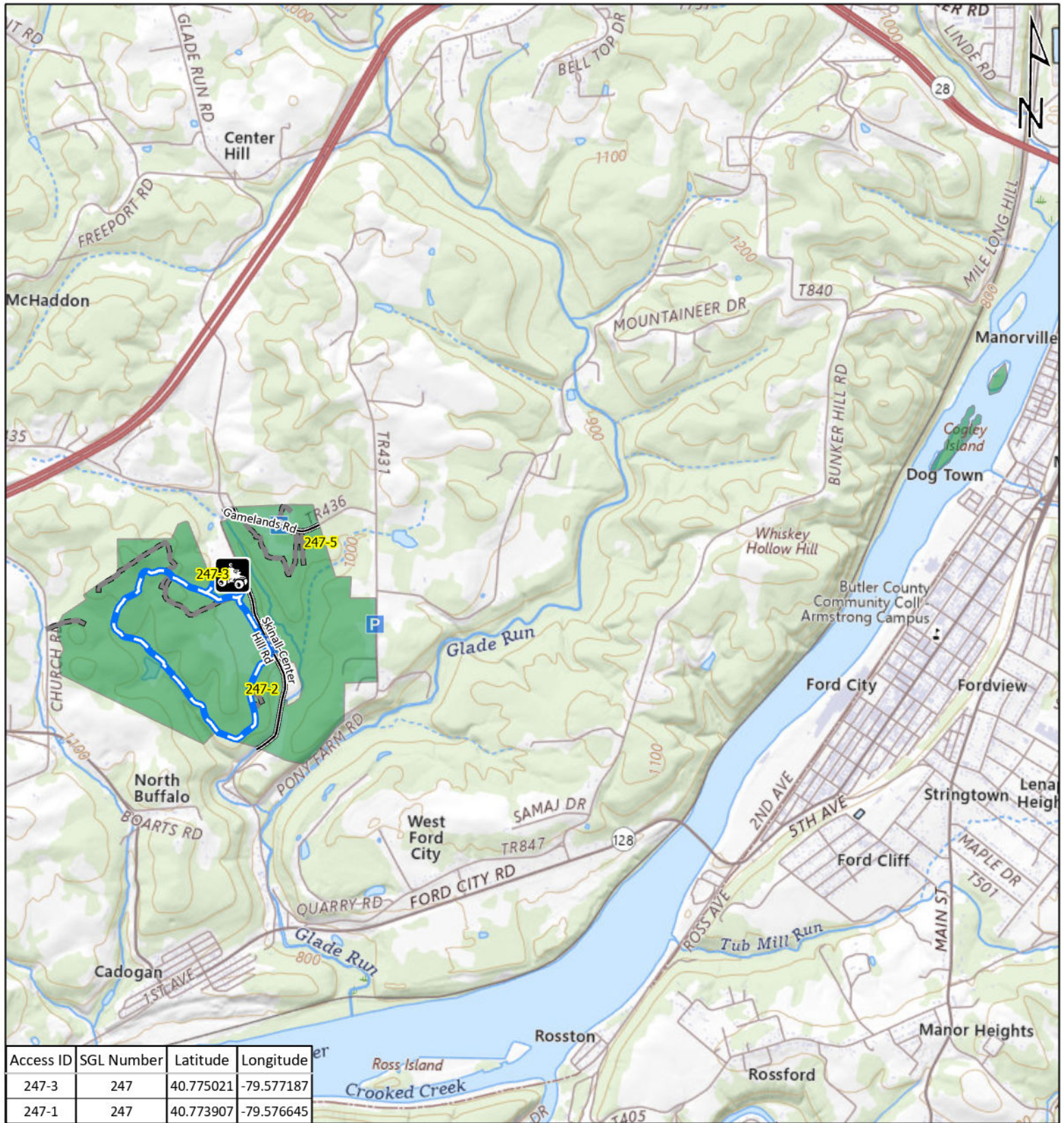
-   ATV Access
-   Vehicle Access
-   ATV & Vehicle Access
-  Roads Open to Vehicle Traffic
-  Roads Seasonally Open to Vehicle Traffic
-  Roads Closed to Vehicle Traffic



**STATE GAME
LAND 245**



It is unlawful to ride ATV's on state game lands, except on designated roads open for persons issued a Disabled Person Permit, and who have a valid registration from the Department of Conservation & Natural Resources.



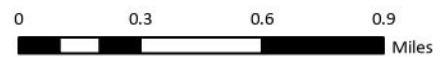
Access ID	SGL Number	Latitude	Longitude
247-3	247	40.775021	-79.577187
247-1	247	40.773907	-79.576645

Emergency Response Points

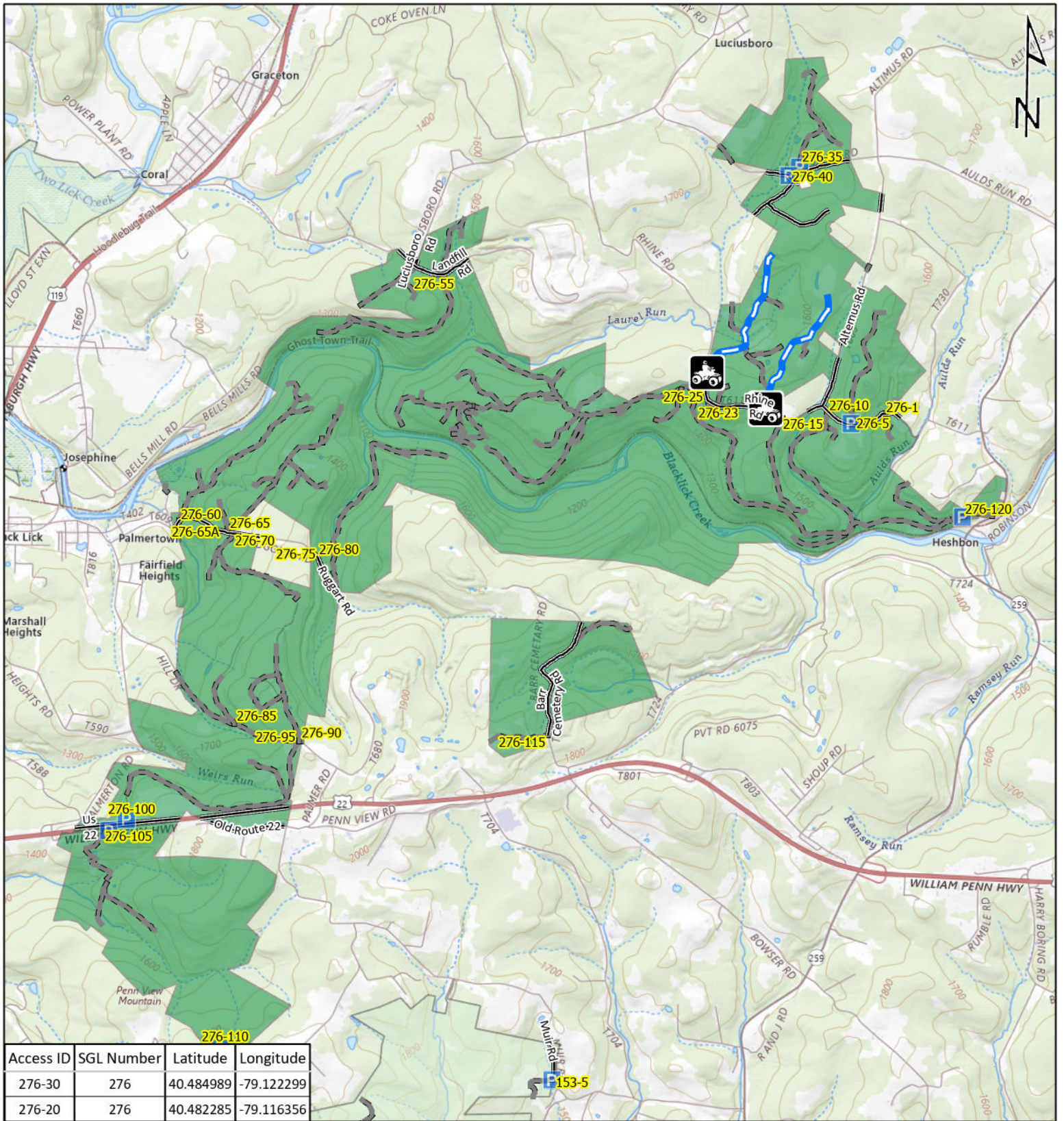
-   ATV Access
-   Vehicle Access
-   ATV & Vehicle Access
-  Roads Open to Vehicle Traffic
-  Roads Seasonally Open to Vehicle Traffic
-  Roads Closed to Vehicle Traffic



STATE GAME LAND 247



It is unlawful to ride ATV's on state game lands, except on designated roads open for persons issued a Disabled Person Permit, and who have a valid registration from the Department of Conservation & Natural Resources.



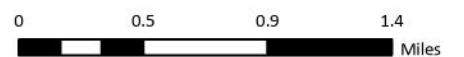
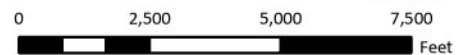
Access ID	SGL Number	Latitude	Longitude
276-30	276	40.484989	-79.122299
276-20	276	40.482285	-79.116356

Emergency Response Points

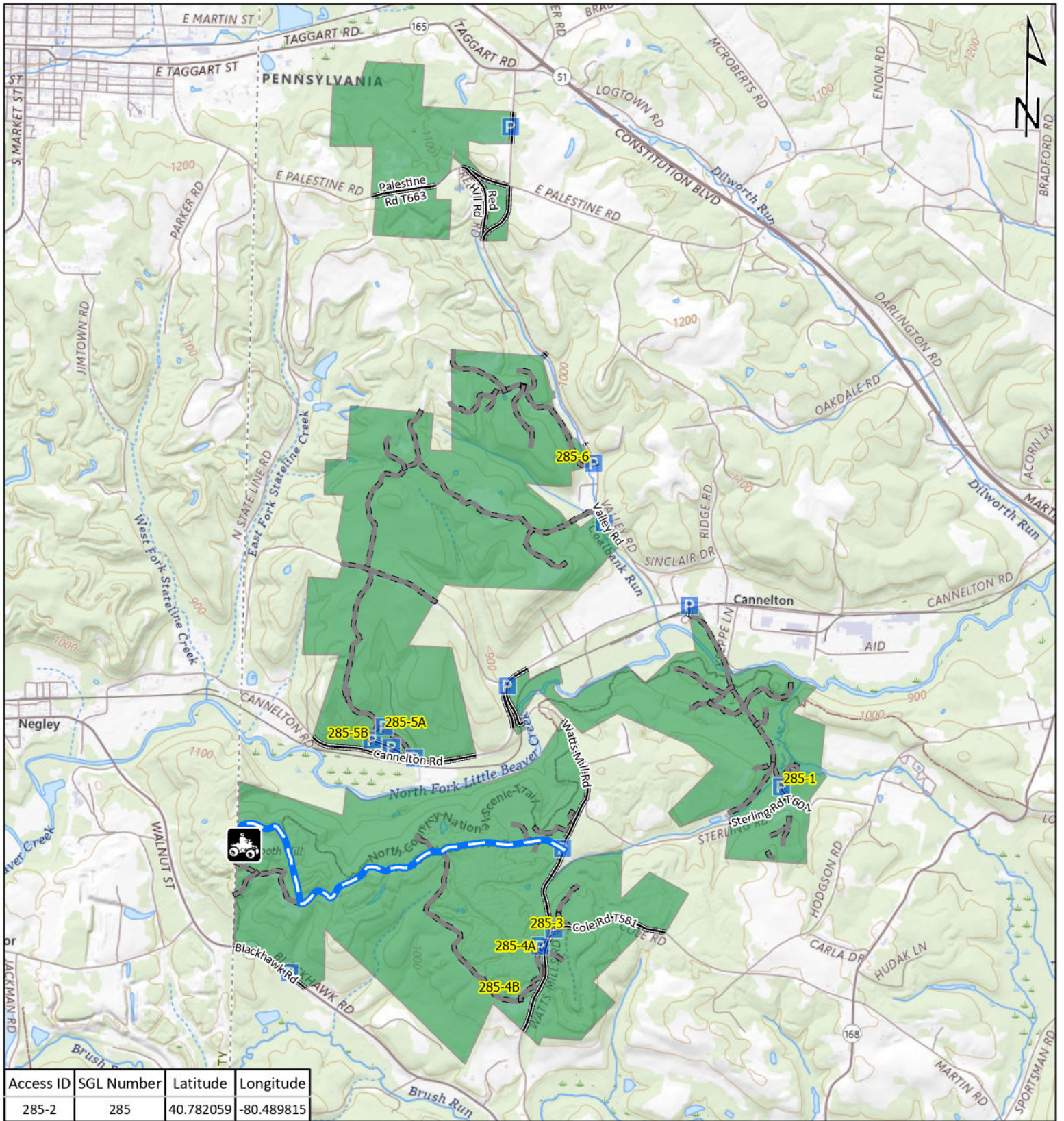
-  ATV Access
-  Vehicle Access
-  ATV & Vehicle Access
-  Roads Open to Vehicle Traffic
-  Roads Seasonally Open to Vehicle Traffic
-  Roads Closed to Vehicle Traffic



**STATE GAME
LAND 276**



It is unlawful to ride ATV's on state game lands, except on designated roads open for persons issued a Disabled Person Permit, and who have a valid registration from the Department of Conservation & Natural Resources.

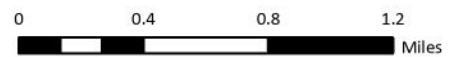
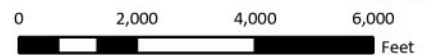


Emergency Response Points

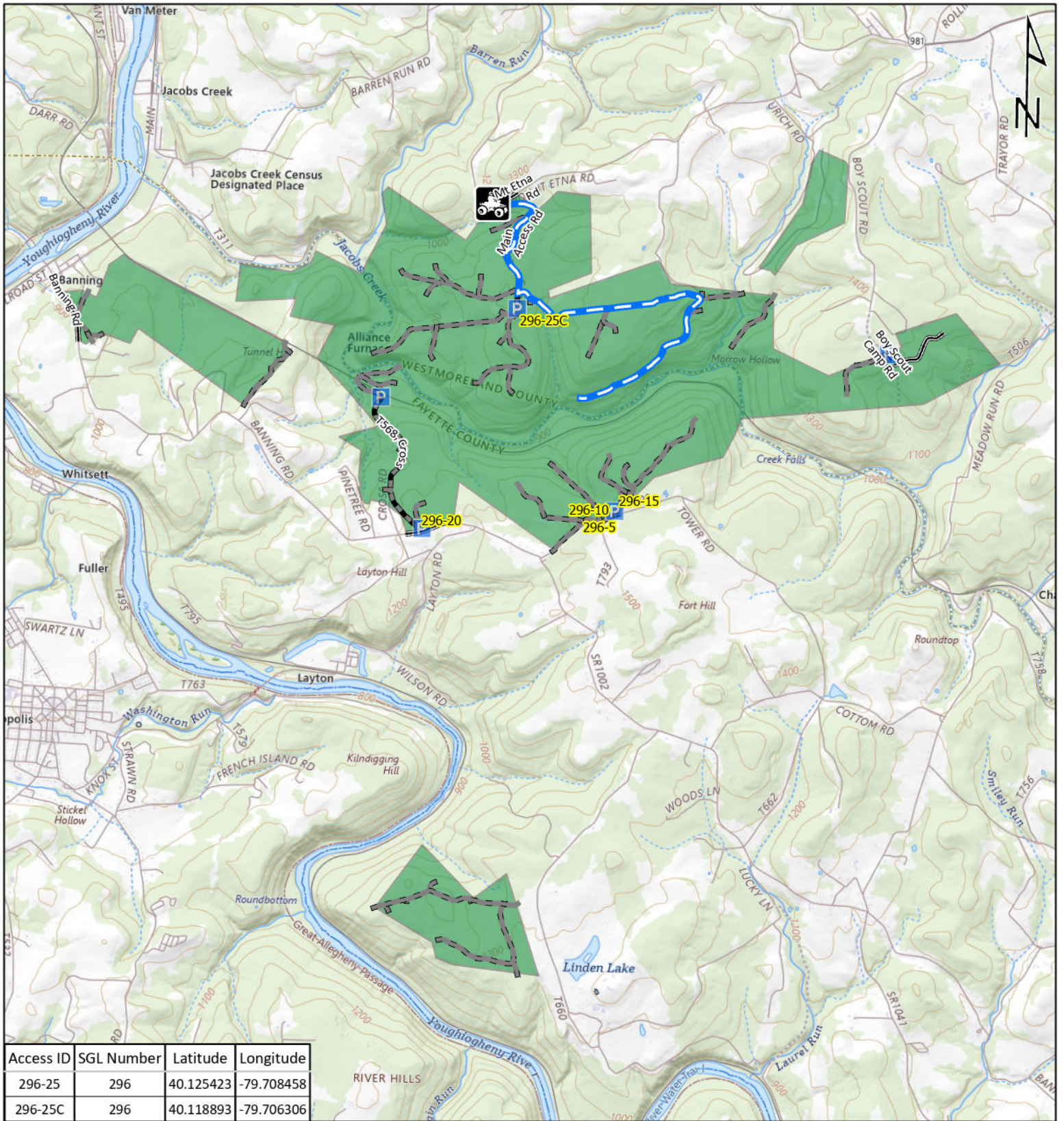
- ATV Access
- Vehicle Access
- ATV & Vehicle Access
- Roads Open to Vehicle Traffic
- Roads Seasonally Open to Vehicle Traffic
- Roads Closed to Vehicle Traffic



STATE GAME LAND 285



It is unlawful to ride ATV's on state game lands, except on designated roads open for persons issued a Disabled Person Permit, and who have a valid registration from the Department of Conservation & Natural Resources.

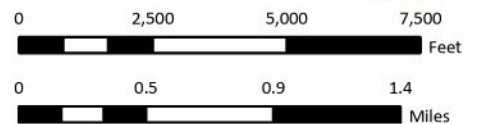


Emergency Response Points

-   ATV Access
-   Vehicle Access
-   ATV & Vehicle Access
-  Roads Open to Vehicle Traffic
-  Roads Seasonally Open to Vehicle Traffic
-  Roads Closed to Vehicle Traffic



**STATE GAME
LAND 296**



It is unlawful to ride ATV's on state game lands, except on designated roads open for persons issued a Disabled Person Permit, and who have a valid registration from the Department of Conservation & Natural Resources.