

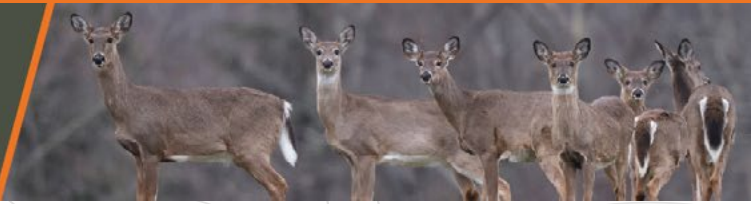


P E N N S Y L V A N I A GAME COMMISSION

**YOUR STATE
WILDLIFE AGENCY**

Managing and protecting wildlife and their habitats while promoting hunting and trapping for current and future generations.

HEALTHY FORESTS. HEALTHY DEER.



HUNTERS, USE YOUR ANTLERLESS LICENSES THIS FALL TO...

HARVEST FOR HABITAT

High deer populations can lead to severe crop damage and over-browsing that reduces available food, prevents forest habitat regeneration, and threatens deer and other species.

HARVEST FOR HERD HEALTH

Reducing deer abundance and promoting healthy habitat can help produce bigger, healthier deer and slow the spread of diseases, including CWD.

HARVEST FOR THE HUNTING FUTURE

Harvesting does isn't just important for promoting healthy habitat and deer this year — it's critical to the future of hunting in Pennsylvania.

Scan to learn more about your role in healthy forests and healthy deer.



SHARE YOUR HARVEST

If you already have a full freezer, consider donating your next deer to help a neighbor in need. An average-size deer provides enough high-protein, low-fat meat for 200 meals!

Since 1991, Hunters Sharing the Harvest has distributed more than 2.5 million pounds of venison to hungry Pennsylvanians via a network of processors, food banks, and community assistance centers throughout all 67 counties in the Commonwealth.

The Pennsylvania Game Commission is a proud partner of Hunters Sharing the Harvest. To learn more, donate, or volunteer, visit sharedeer.org.



HUNTERS GIVING BACK



PENNSYLVANIA SUNDAY HUNTING 2024



SUNDAY, NOV. 17
SUNDAY, NOV. 24
SUNDAY, DEC. 1



VISIT PGC.PA.GOV FOR ALL SUNDAY HUNTING DETAILS

THANK YOU FOR BEING A PENNSYLVANIA HUNTER.

MARK YOUR CALENDARS FOR SUNDAY HUNTING OPPORTUNITIES

Pennsylvania has THREE expanded Sunday hunting opportunities for 2024: Nov. 17, Nov. 24, and Dec. 1.

Turkeys and migratory game birds may not be hunted on any of these three Sundays. All other game that's in season may be hunted on these Sundays.

If you hunt private land on Sundays, you must carry written permission from the landowner. The permission slip should include the hunter's name, address, and CID number as well as the landowner's name, address, and phone number.

You can find a permission slip and more information on Sunday hunting on p. 4 of the Hunting & Trapping Digest, available to download for free, on pgc.pa.gov.

TAKE AIM AT A PUBLIC SHOOTING RANGE

Did you know the Game Commission offers recreation opportunity at public shooting ranges on 40 separate state game lands throughout Pennsylvania?

The agency has constructed or renovated more than a dozen public shooting ranges in 2024 alone, with plans to upgrade even more in the future.

Whether you're dialing in for hunting season or simply enjoying target practice, take advantage of the rifle, pistol, archery, and shotgun ranges available throughout the Commonwealth.

Under the Pittman-Robertson Act, federal excise tax dollars generated from the sales of firearms, ammunition, and archery equipment directly support the Game Commission's mission. The agency continues to invest in shooting ranges to facilitate the millions of recreational shooters in Pennsylvania and ensure the future of wildlife conservation.

Note: You must possess an annual shooting range permit or a current general hunting or furtaker license to use these public shooting ranges.



Scan to find a shooting range near you.



TAKE STEPS TO HUNT SAFELY

Hundreds of Pennsylvanians have been seriously injured in tree stand-related accidents.

Follow these STEPS every time you climb into a tree to reduce your safety risk:

- **Safety harness or belt:** Always wear a full-body safety harness whenever your feet leave the ground.
- **Trees stand maintenance:** Check your stand for missing or broken parts before each use.
- **Evaluate your stand site:** Select trees that are alive and will support your weight.
- **Partners and plans:** Hunt with a partner and have plan in case of an emergency.
- **Signal:** Carry a whistle or other signaling device in case you need assistance.

Ensure you stay seen by hunters this fall by wearing at least 250 square inches of fluorescent orange that's visible from 360 degrees on your head, chest, and back while hiking, hunting, or recreating outdoors during hunting seasons. Find all fluorescent orange requirements on p. 8 of the Hunting & Trapping Digest.

Visit pgc.pa.gov for more hunting safety tips. Good luck. Have fun. Hunt safely.



EXPERIENCE PENNSYLVANIA'S ELK HERD

Pennsylvania is home to nearly 1,400 elk freely roaming across 3,000 square miles, mostly within Elk, Cameron, Clinton, Clearfield, and Centre counties.

The most popular time of year to view elk is during the rut, the mating season running from September through October, when bull bugles echo through the crisp fall air.



As thousands of people travel to elk country each fall, ELK SMART provides visitors four simple ways to ensure the wild essence of the herd remains for generations to come.

1. **GIVE ELK SPACE.** Keep a distance – of at least 100 yards – between you and the elk.
2. **NEVER FEED ELK.** Not only is it illegal to feed elk in Pennsylvania, but it's also dangerous to both people and elk.
3. **DON'T NAME ELK.** Characterizing elk, or any wildlife, by naming them degrades their wild essence.
4. **DO YOUR PART.** If you see someone being disruptive or careless, kindly ask them to stop or report it to the Pennsylvania Game Commission's Northcentral Region by calling 833-742-4868.

Learn more about Pennsylvania's elk herd and how to be ELK SMART at pgc.pa.gov.

REPORT BANDED BIRDS

Each year, thousands of birds are marked with leg bands to help the Pennsylvania Game Commission and the U.S. Fish and Wildlife Service learn more about migratory movements, harvest numbers, and survival rates.

Hunters are encouraged to report banded geese, doves, ducks, and woodcocks they harvest online at reportband.gov or by phone at 1-800-327-BAND. Hunters will be asked to provide information on where, when, and what species of migratory birds were taken in addition to the band number.

This information is critical to the successful management of migratory birds and the setting of hunting regulations. Thank you in advance for assisting in managing this valuable resource!



TUNE IN TO THE ELK CAM

If you can't travel to elk country this fall, tune in to our elk cam, which is livestreaming the elk action from Benezette until the start of archery season.

Visit hdontap.com and search "Pennsylvania Elk Cam" to watch live.



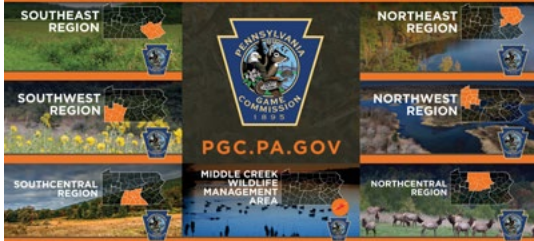
HELP PROTECT PENNSYLVANIA WILDLIFE

Wildlife crimes affect everyone. The Pennsylvania Game Commission's Operation Game Thief program serves to protect wild birds and wild mammals and encourages those who have information related to wildlife crimes to report details as soon as possible.

Report information to the Operation Game Thief's toll-free hotline – 24 hours a day, 7 days a week, 365 days a year – at 1-888-PGC-8001 or fill out an online form. Callers may remain confidential. Learn more about the program at bit.ly/PGCOGT.



FOLLOW THE PENNSYLVANIA GAME COMMISSION



STAY CONNECTED

Follow the Pennsylvania Game Commission on social media to stay up to date on all things related to wildlife, hunting, trapping, and more!

In addition to the Game Commission's official page, each of our six regions as well as Middle Creek Wildlife Management Area have a dedicated Facebook page where you can get the latest news, stories, and information at a local level (like prescribed burns, road and range closures, local habitat improvement projects, and more)!

For more details on all the ways you can connect with the Game Commission, visit pgc.pa.gov.



LISTEN TO CALL OF THE OUTDOORS

Call of the Outdoors, the Pennsylvania Game Commission's podcast, provides an inside look

at statewide habitat projects, the science behind wildlife management, and what drives agency decisions.

Listeners can also learn tips for coexisting with wildlife, expert hunting tactics, and answers to the most common conservation questions. Tune in to new episodes each month on Apple Podcasts, iHeart, Spotify, YouTube, or calloftheoutdoorspgc.com.



REPORT YOUR HARVEST

Do your part and report your harvest this fall! Report online at huntfish.pa.gov, by phone at 1-800-838-4431, or by mail (Attn Harvest Reports, Pennsylvania Game Commission, 2001 Elmerton Ave., Harrisburg, PA 17110-9851).

FOLLOW US ONLINE



PENNSYLVANIA GAME COMMISSION: YOUR STATE WILDLIFE AGENCY

HEADQUARTERS

2001 Elmerton Avenue, Harrisburg, PA 17110
Phone: 717-787-4250

REGION OFFICES

NORTHWEST REGION - 1509 Pittsburgh Road, Franklin, PA 16323
Butler, Clarion, Crawford, Erie, Forest, Jefferson, Lawrence, Mercer, Venango, Warren counties

SOUTHWEST REGION - 4820 Route 711, Bolivar, PA 15923
Allegheny, Armstrong, Beaver, Cambria, Fayette, Greene, Indiana, Somerset, Washington, Westmoreland counties

NORTHCENTRAL REGION - 1566 South Route 44 Highway, P.O. BOX 5038, Jersey Shore, PA 17740
Cameron, Centre, Clearfield, Clinton, Elk, Lycoming, McKean, Potter, Tioga, Union counties

SOUTHCENTRAL REGION - 8627 William Penn Highway, Huntingdon, PA 16652

Adams, Bedford, Blair, Cumberland, Franklin, Fulton, Huntingdon, Juniata, Mifflin, Perry, Snyder, York counties

NORTHEAST REGION - 3917 Memorial Highway, Dallas, PA 18612

Bradford, Carbon, Columbia, Lackawanna, Luzerne, Monroe, Montour, Northumberland, Pike, Sullivan, Susquehanna, Wayne, Wyoming counties

SOUTHEAST REGION - 253 Snyder Road, Reading, PA 19605
Berks, Bucks, Chester, Dauphin, Delaware, Lancaster, Lebanon, Lehigh, Montgomery, Northampton, Philadelphia, Schuylkill counties

VISIT US ONLINE AT PGC.PA.GOV

CALL US AT 1-833-PGC-HUNT OR 1-833-PGC-WILD.