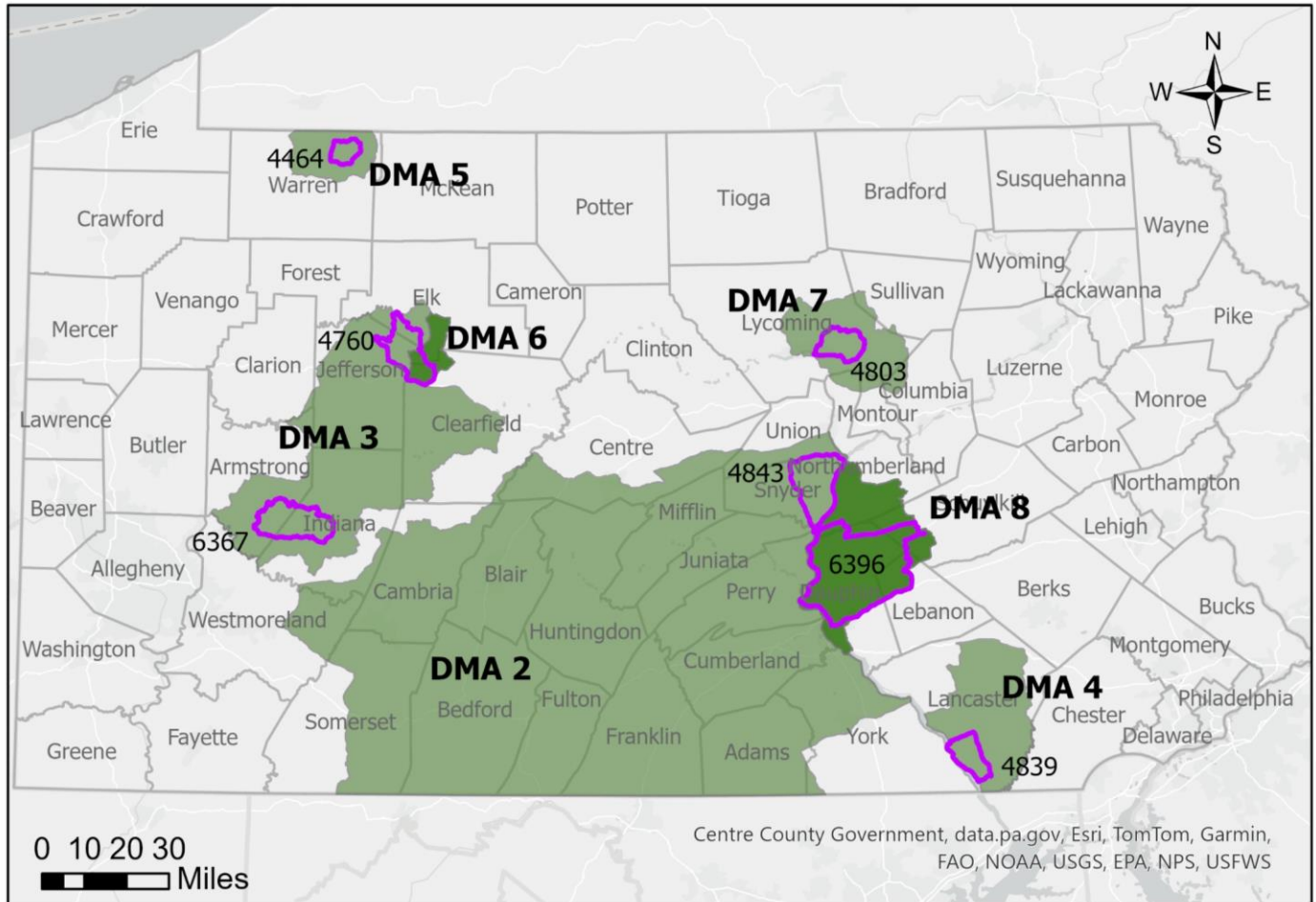


Pennsylvania Game Commission

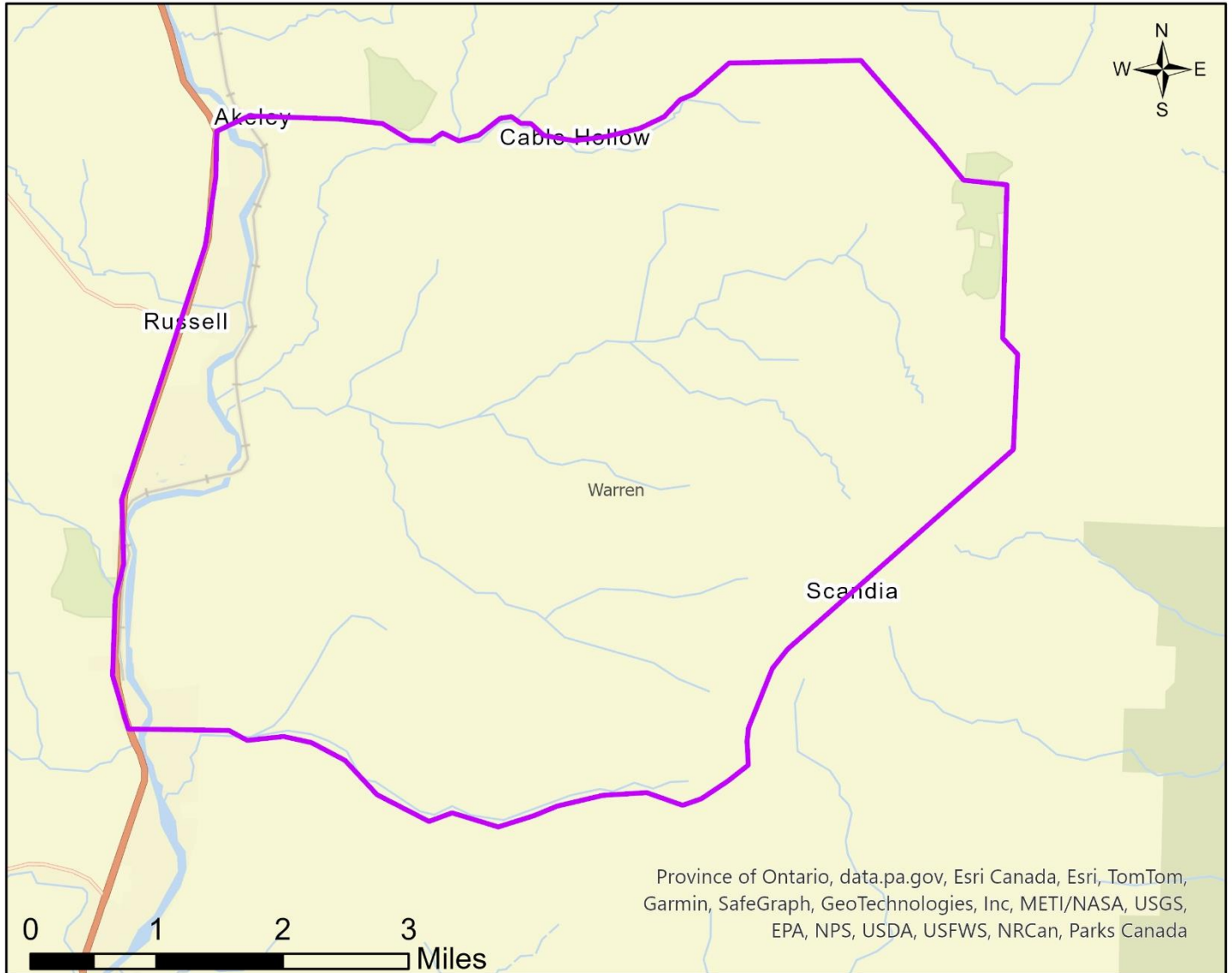
Chronic Wasting Disease DMAP Units



Disease Management Area (DMA)
 2024-25 DMAP Units
 County

Pennsylvania Game Commission

Chronic Wasting Disease DMAP Unit



CWD DMAP Unit 4464

32 square miles (20,622 acres)

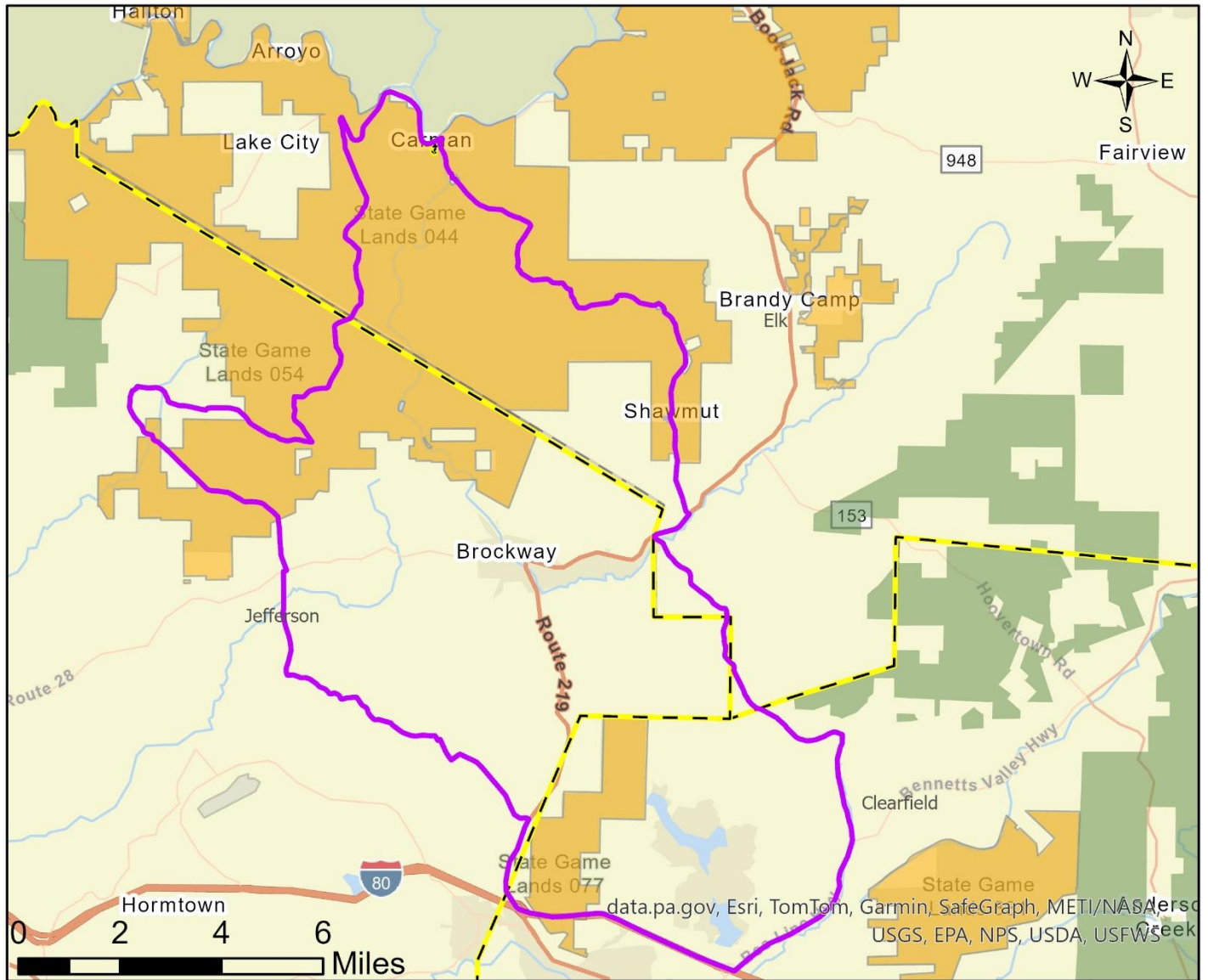
Established 2020-21

Date: 5/24/2024

- 2024-25 DMAP Unit
- State Game Lands
- County
- State Forests

Pennsylvania Game Commission

Chronic Wasting Disease DMAP Unit



CWD DMAP Unit 4760

105 square miles (67,636 acres)

Established 2021-22

Date: 5/24/2024

- 2024-25 DMAP Unit
- County
- State Game Lands
- State Forests

Pennsylvania Game Commission

Chronic Wasting Disease DMAP Unit



CWD DMAP 4803

65 square miles (41,496 acres)

Established 2022-23

Date: 5/24/2024

- | | |
|---|--|
|  2024-25 DMAP Unit |  State Game Lands |
|  County |  State Forests |

Pennsylvania Game Commission

Chronic Wasting Disease DMAP Unit



CWD DMAP 4839

61 square miles (39,285 acres)

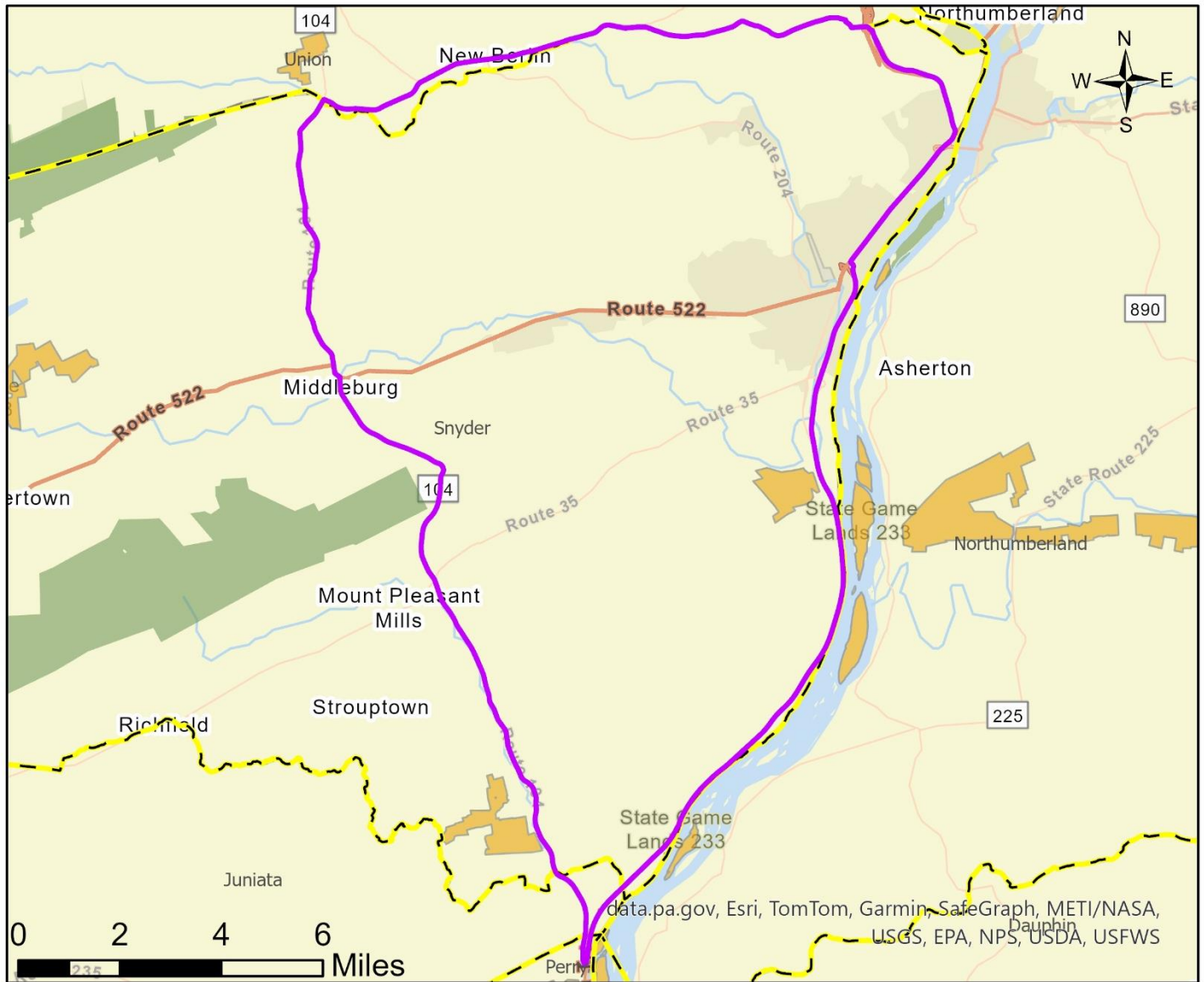
Established 2022-23

Date: 5/24/2024

- | | | | |
|---|-------------------|---|------------------|
|  | 2024-25 DMAP Unit |  | State Game Lands |
|  | County |  | State Forests |

Pennsylvania Game Commission

Chronic Wasting Disease DMAP Unit



CWD DMAP 4843

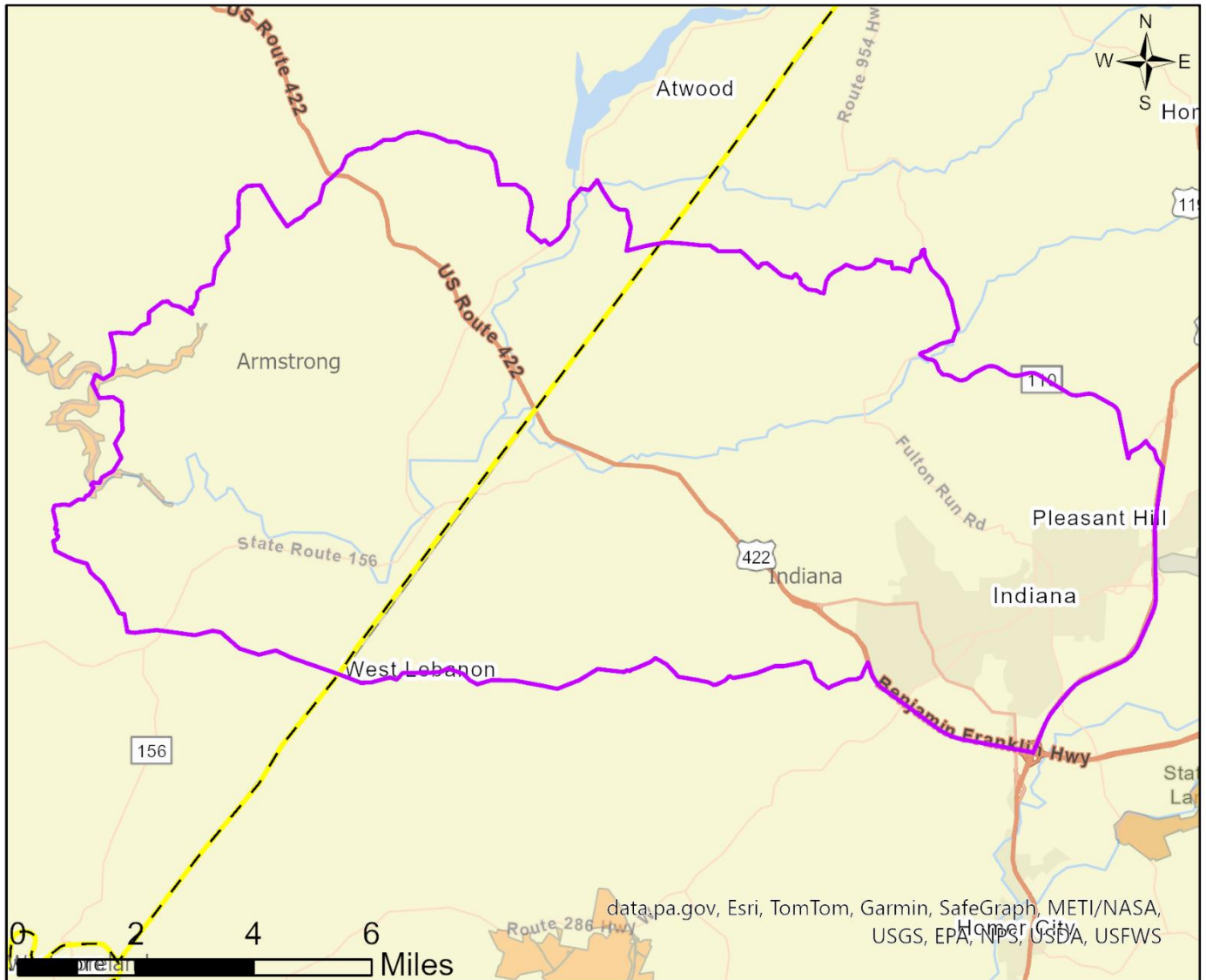
136 square miles (87,060 acres)

Established 2022-23

Date: 5/24/2024

- 2024-25 DMAP Unit
- County
- State Game Lands
- State Forests

Pennsylvania Game Commission Chronic Wasting Disease DMAP Unit



CWD DMAP Unit 6367

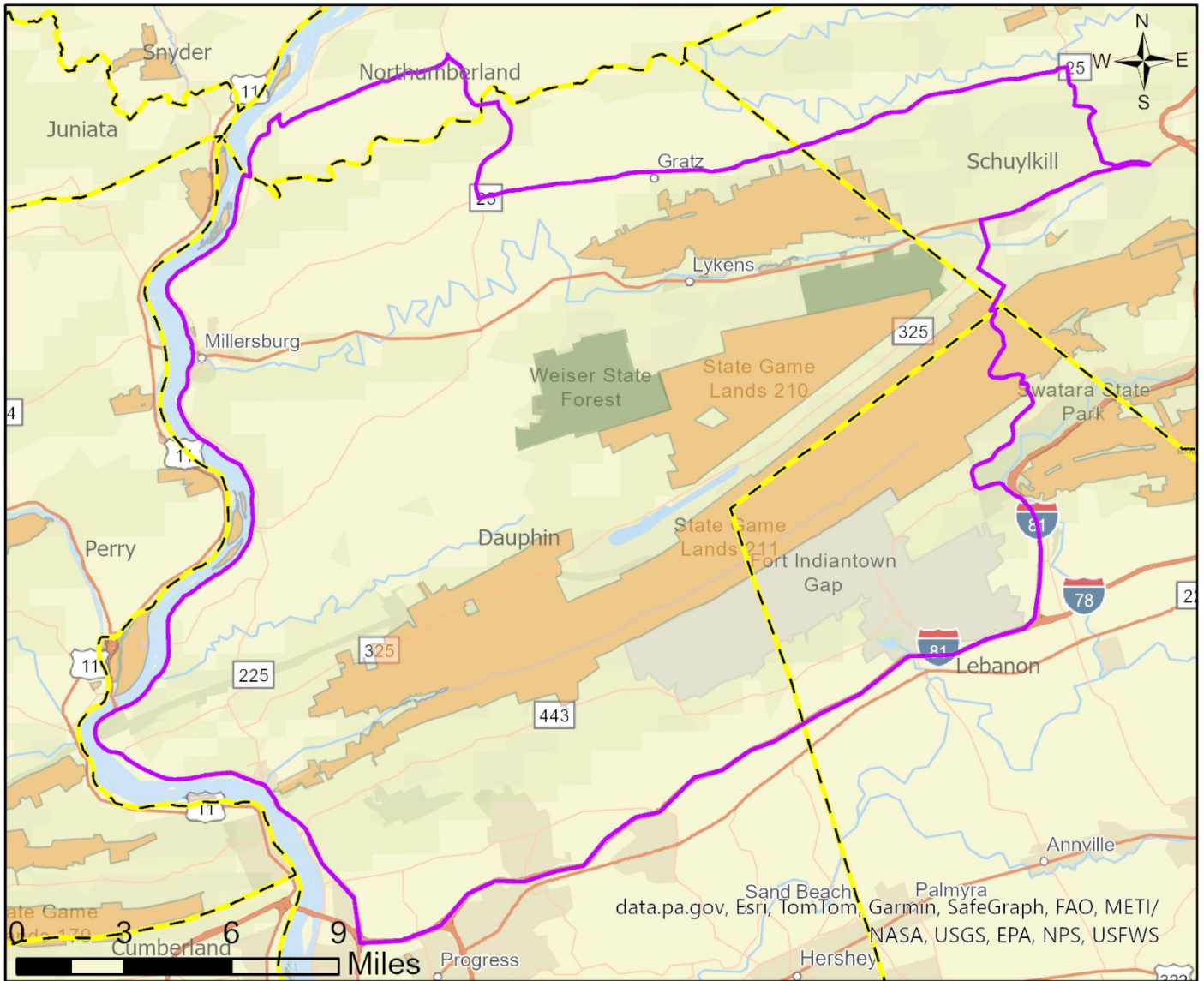
126 square miles (80,681 acres)

Established 2023-24
Date: 6/13/2024

-  2024-25 DMAP Unit
-  County
-  State Game Lands
-  State Forests

Pennsylvania Game Commission

Chronic Wasting Disease DMAP Unit



CWD DMAP Unit 6396

431 square miles (276,149 acres)

Established 2023-24
Date: 5/24/2024

- 2024-25 DMAP Unit
- County
- State Game Lands
- State Forests